

# Teagasc

## National Farm Survey 2011

**Thia Hennessy, Anne Kinsella,  
Brian Moran and Gerry Quinlan**

**Agricultural Economics & Farm Surveys Department**

**Teagasc**

**Athenry**

**Co. Galway**

[www.teagasc.ie](http://www.teagasc.ie)



## **ACKNOWLEDGEMENTS**

The authors wish to thank all who contributed to the National Farm Survey 2011 - the farmers who participate voluntarily, the Central Statistics Office who select the sample and provide the population weights. Grateful acknowledgement is due to the Teagasc research staff involved in the collection and validation of the farm data: P. Bryce, P.J. Burke, M. Corcoran, A Curley, M. Cushion, L. Deane, L. Delaney, P. Harnett, P. Hayes, P. Healy, P. Madden, E. McGrath, J. McWeeney, M. Nicholson, J. Colgan, J. Robinson, J. Teehan and to M. Moloney for the administration of the survey.

## SUMMARY OF NATIONAL FARM SURVEY 2011 ESTIMATES

- Average family farm income reached unprecedented levels in 2011 averaging at €24,461, a 30% increase on the 2010 average.
- Income increases were entirely driven by output gains as production costs increased and the value of direct payments declined marginally.
- Direct payments per farm averaged at €17,929 in 2011, showing an overall decline of 2% on 2010 levels. Farming remains highly reliant on direct payments, comprising 73% of income.
- Average incomes on dairy farms increased by 36% to €68,570. Favourable market conditions resulted in a 15% increase in dairy gross output. While some input costs, such as fertiliser and fuel increased considerably, total production costs were up just 4%.
- On the back of strong beef prices in 2011, cattle rearing farm income increased by 48% to €10,453. Despite the considerable improvement in income, there are still large numbers of small, low-income cattle farms that continue to be highly reliant on direct payments.
- Sheep farms also benefited from price increases and gross output on sheep farms increased by 13% with average family farm income increasing by 25% to €16,805.
- While grain markets remained favourable in 2011, and output increased on tillage farms, this was offset by cost inflation, especially in fertiliser and energy, resulting in tillage farm incomes remaining relatively unchanged from the 2010 level.
- Continuing the trend from previous years, and in line with the wider macro-economy, the number of households where the farmer and/or the spouse had an off farm job declined to 49.5% in 2011, from 51% in 2010 and 54% in 2009.
- Debt levels in the farm sector totalled just under €1.9 billion in 2011, a 14% decrease on the 2010 figure showing a substantial repayment of debt.
- The percentage of farms classified as economically viable businesses increased from 27% in 2010 to 35% in 2011. Over 34% of farm households are classified as economically vulnerable.

## Foreword

The National Farm Survey (NFS) has been conducted by Teagasc on an annual basis since 1972. The survey is operated as part of the Farm Accountancy Data Network of the EU and fulfils Ireland's statutory obligation to provide data on farm output, costs and income to the European Commission. A random, nationally representative sample is selected annually in conjunction with the Central Statistics Office (CSO). Each farm is assigned a weighting factor so that the results of the survey are representative of the national population of farms.

In 2011 1,022 farms participated in the NFS, these farms are weighted to represent the farm population of 105,535 farms, see methodology box below. The following report summarises the financial results for these farms in 2011.

Farms are assigned into six farm systems on the basis of farm gross output, as calculated on a standard output basis. Standard output measures are applied to each animal and crop output on the farm and only farms with a standard output of €4,000 or more, the equivalent of 3 dairy cows, 3 hectares of wheat or 10 suckler cows, are included in the sample. Farms are then classified as one of the six farm systems on the basis of the main outputs of the farm. Farms falling into the Pigs and Poultry System are not included in the survey, due to the inability to obtain a representative sample of these systems.

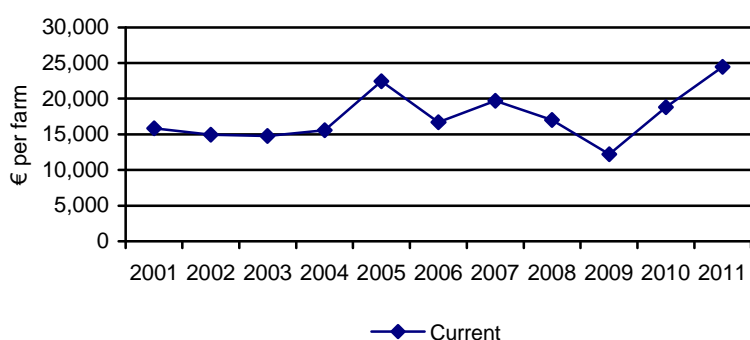
### Methodological Note: Population Update

The CSO conducts a Census of Agriculture every 10 years to record the population of farms and the structure of farming in Ireland. Farm Structures Surveys (FSS) are conducted, in the intervening periods, to produce estimates of the farm population. The 2010 Census reveals that farm numbers did not decline as rapidly as estimated by the FSS. The 2010 Census recorded the population of farms at 139,829 compared to 141,527 farms in June 2000, a fall of just over 1% even though the 2007 FSS estimated the population to have declined by 9.4%. The 2011 NFS population is based on the 2010 Census of Agriculture. When pigs, poultry and farms with a Standard Output of less than €4,000 are excluded **105,535** farms are represented by the NFS in 2011. In order to ensure consistency in comparing year on year results, the 2010 results referred to in this report have been reproduced using a weighting system based on the updated population, since the 2010 results were previously produced based on 2007 Farm Structures Survey.

## Overview of Farm Income

Family Farm Income per Farm (FFI) is the principal measure of income used in the NFS. This is calculated by deducting all farm costs (direct and overhead) from the value of farm gross output. Factors of production owned by the farmer, such as family labour and land, are not included as costs of production. FFI therefore represents the financial reward to all members of the family, who work on the farm, for their labour, management and investment. It does not include income from non-farming sources and thus may not be equated to household income.

**Figure 1: Family Farm Income 2001 to 2011: average of all farms**



Family farm income, as recorded across all sizes and systems of farms, reached unprecedented levels in 2011 averaging at **€24,461**, a **30%** increase on the 2010 level.

The income increase was driven by market gains as **gross output increased by 12%**, with the largest output gains in the dairy and cattle systems. The value of subsidies declined slightly due to a reduction in REPS payments. Total direct costs increased by 7%, mostly due to increases in fertiliser and fuel prices, while overhead costs remained relatively static.

**Table 1: Components of Family Farm Income 2010 and 2011: average of all farms**

	2010	2011	% change 2010 to 2011
Gross output	60,010	67,375	12
<i>(of which is direct payments)*</i>	18,278	17,929	-2
Total Production Costs	41,221	42,914	4
<i>(of which is direct costs)</i>	20,849	22,225	7
<i>(of which is overhead costs)</i>	20,372	20,689	2
<b>Family Farm Income</b>	<b>18,789</b>	<b>24,461</b>	<b>30</b>

\* in this case direct payments refers to all non-capital direct payments made to farmers

## Overview of Farm Income Distribution

Family farm income varies widely across the different farm systems and sizes (Table 2). As expected, income increases with farm size. On average, and across most size groups, dairy, tillage and mixed livestock farms generate the highest incomes.

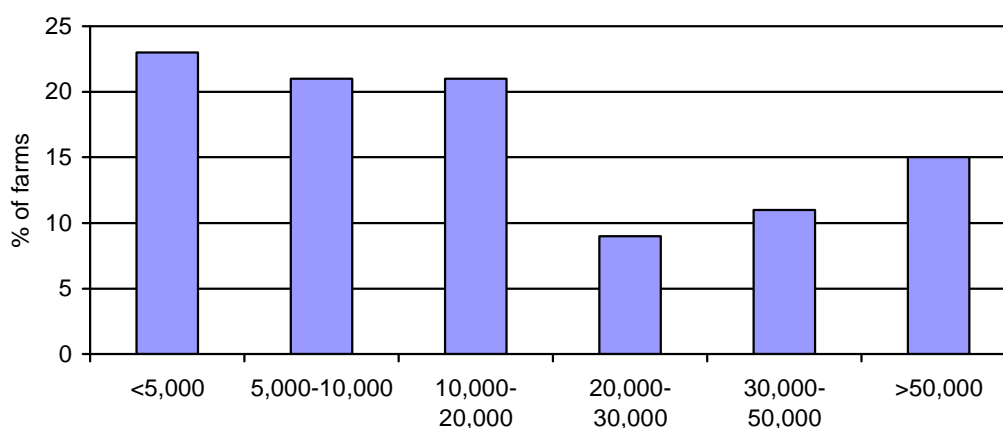
**Table 2: Family Farm Income by System and Farm Size– 2011**

Size (Ha)	<10	10-20	20-30	30-50	50-100	> 100	All
Dairy	-	-	26287	56067	91035	117100	68570
Cattle Rearing	-	5134	5744	15086	24063	-	10453
Cattle Other	-	4851	11548	19005	29309	62380	14573
Sheep	-	8311	12198	20125	26603	-	16805
Mixed Livestock	-	-	-	35093	65802	113038	34902
Tillage	-	-	-	16436	45394	111322	35296
<b>All</b>	<b>3070</b>	<b>5716</b>	<b>10742</b>	<b>26040</b>	<b>53529</b>	<b>93941</b>	<b>24461</b>

*Where there are less than 10 farms in any given cell this is shown as - resulting in the "All" figure not corresponding to the individual figures shown.*

The income distribution shows **23% earning less than €5,000** and **15% earning more than €50,000**, (Figure 2). The large variation in income is due to differences in both farm size and system.

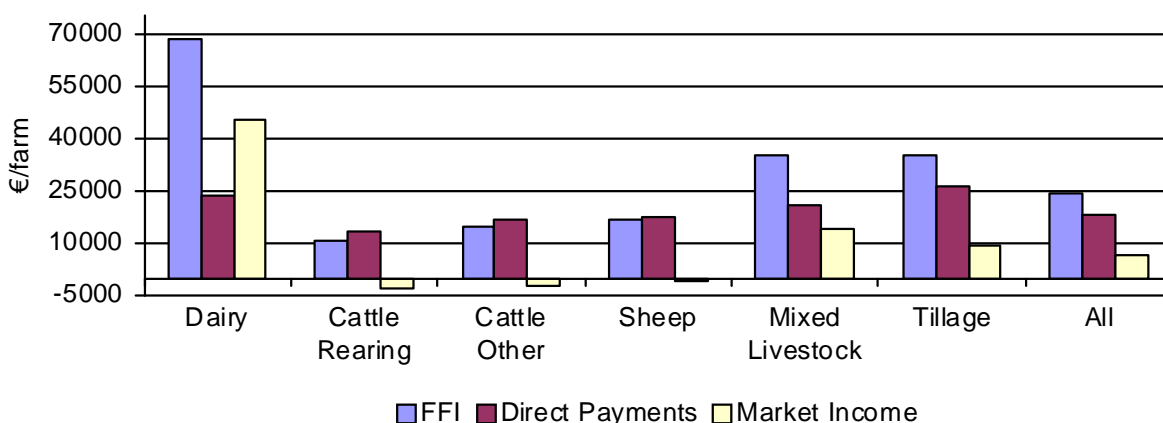
**Figure 2: Distribution of Family Farm Income 2011: all farms**



### Reliance on Direct Payments

Across all farm systems reliance on direct payments remains high (Figure 3). **Subsidies comprised 73% of FFI** on all farms in 2011 a reduction from 97% in 2010. The reliance on subsidies varies across systems. On dairy farms subsidies comprised 34% of FFI on average, while on cattle and sheep farms market output was, on average, insufficient to cover production costs resulting in slightly negative market incomes.

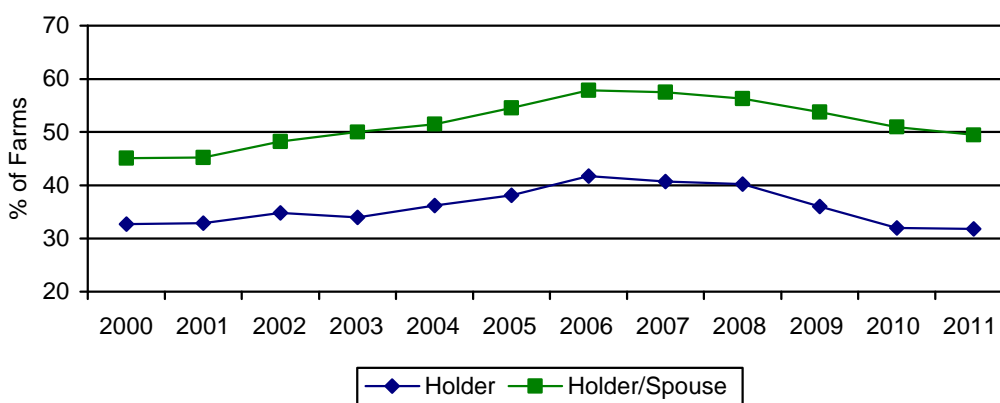
**Figure 3: Family Farm Income, Direct Payments and Market Income by Farm System – 2011**



### Off-farm Employment

Against the backdrop of a poor macro-economy, the number of farm households where the farmer and/or spouse are employed off the farm declined for the fourth consecutive year. The number of farm households where the farmer and/or the spouse were engaged in off-farm employment was **49.5% in 2011** compared to 51% in the previous year.

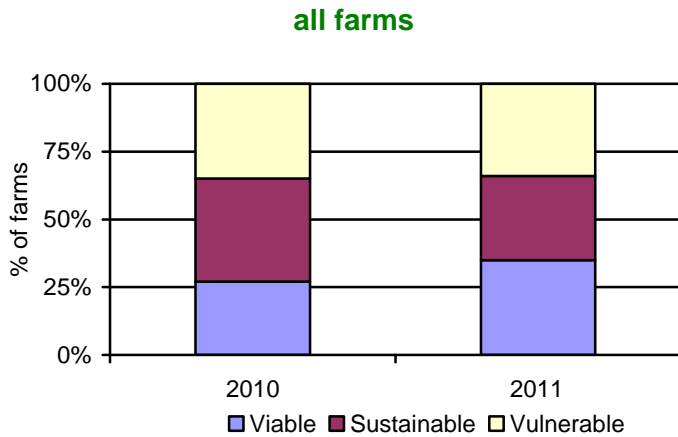
**Figure 4: Percentage of Farms with Farmer and/or Spouse Employed Off-Farm**



## Viability of Farming

A farm is defined as economically viable if it has the capacity to (a) pay family labour at the average agricultural wage, and (b) provide a 5 per cent return on non-land assets. Farms that are not economically viable are sustainable if the farmer and/or the spouse are employed off the farm. Farms that are neither viable nor sustainable are classified as economically vulnerable.

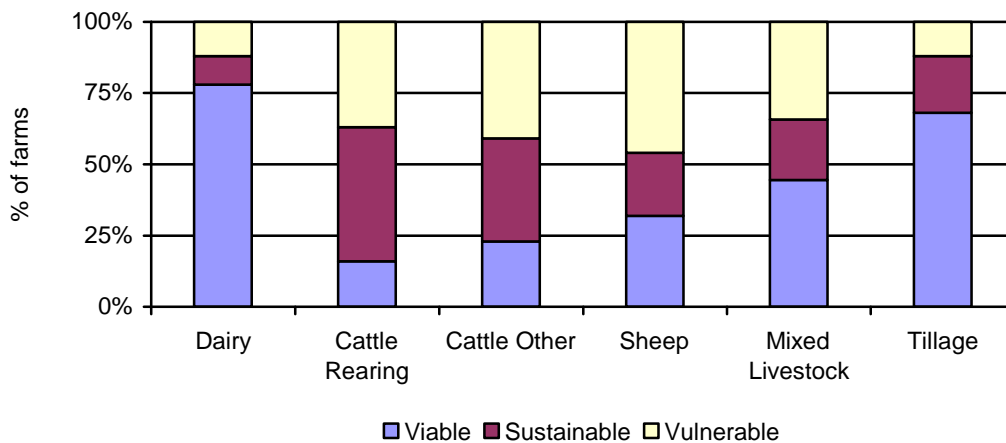
**Figure 5: Classification of the Farms 2010 and 2011:**



The proportion of economically viable farms increased to 35% in 2011 from 27% in 2010. Despite the improvement in farm income in 2011 and the prevalence of off-farm employment, 34%, or 35,640 farms, were still considered economically vulnerable.

Dairy farms tend to have the highest proportion of viable farm businesses. Over 78% of dairy farms and 68% of tillage farms were classified as economically viable businesses in 2011. The proportion of economically viable cattle farms remains low at about 20%. While the presence of off-farm income is very important to a large number of cattle farms, the number classified as economically vulnerable is still high at almost 40%.

**Figure 6: Classification of the 2011 Farm Population by system**

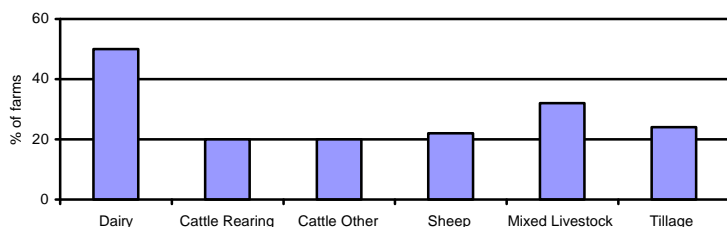




## Investment and Financial Ratios

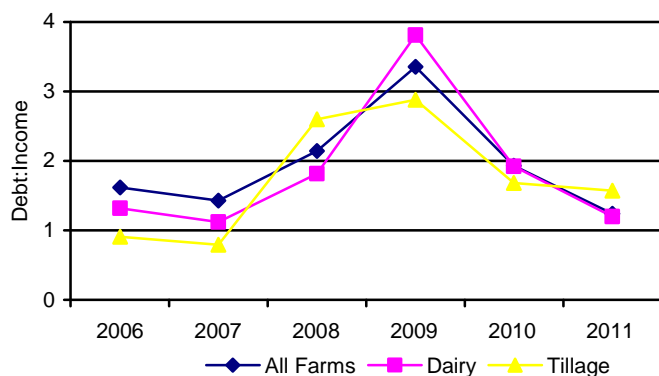
The **total volume of debts** on farms in 2011 was almost **€1.9 billion**, a **decrease of 14%** on the **2010** figure, suggesting that farmers used the favourable income position in 2011 to repay debt.

**Figure 7: Percentage of Farms with loans: 2011**



The large majority of farms have no farm business related debt, although this varies considerably across farm systems. Only 26% of all farms have business related debt, compared to 50% of dairy farms and over 32% of mixed livestock farms.

**Figure 8: Debt to Income Ratio for only farms with loans**



On farms with loans, the debt to income ratio increased considerably in 2009 in line with increased investment and low farm incomes. The improvement in incomes in 2010 and 2011, in addition to substantial reductions in debt in 2011, has improved the debt to income position on all farms.

Gross new investment in farming totalled €696 million in 2011 an increase of just over 5% on the 2010 level. As is usually the trend, dairy and tillage farms accounted for the majority of investment.

**Table 3: Average Investment by Farm System - 2011**

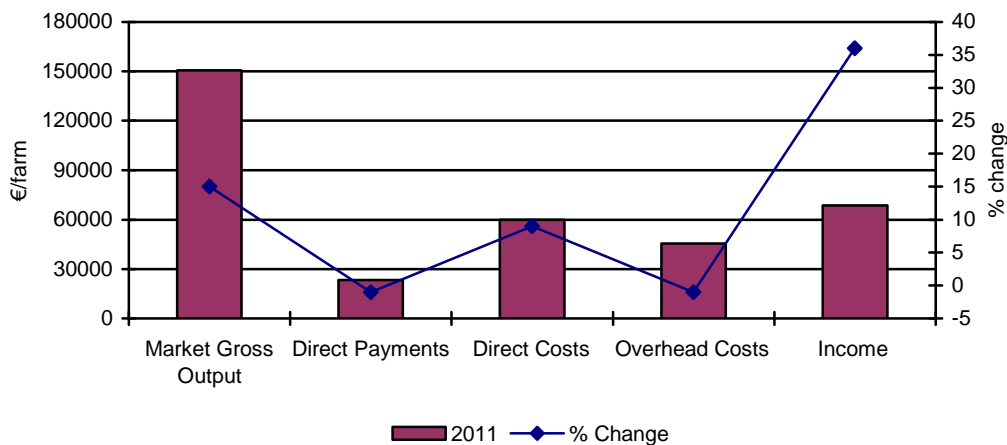
	Dairy	Cattle Rearing	Cattle Other	Sheep	Tillage	Mixed Livestock	All
<b>€/Farm</b>							
<b>Gross New Investment</b>	19258	2285	4463	2727	10962	9601	6601
<b>Net New Investment</b>	17091	2167	3365	2377	9839	8533	5702

*(Note: net new investment is equal to gross new investment in machinery, buildings, quotas and land improvements (including forestry) minus sales and capital grants received during the year).*

## Overview of the Dairy System

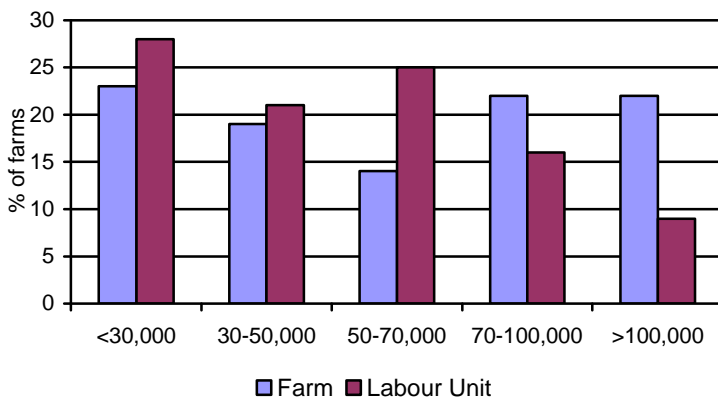
There were approximately 15,600 specialist dairy farms with an **average FFI of €68,570** in 2011, a **36% increase on 2010** (Figure 9). The income increase was entirely market driven with **market gross output up 15% on dairy farms** as the annual milk price increased by 15%. It should be noted that the income figures do not include any potential super levy charges. The value of direct payments on dairy farms was relatively unchanged and comprised just 13% of total output and 34% of income.

**Figure 9: Components of Family Farm Income for Dairy farms in 2011 and percentage change from 2010**



The increase in direct costs of 9% was due to increases in fertiliser, hire of machinery, vet and AI costs. Total overhead costs were unchanged, while some components increased, especially energy based costs, charges associated with buildings depreciation declined in line with the reduction in construction/building replacement costs.

**Figure 10: Income Distribution Dairy Farms**

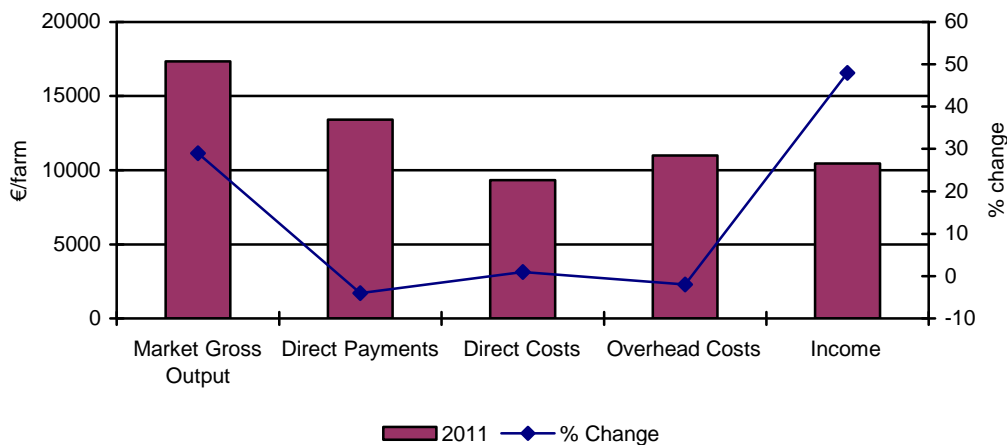


Just over 23% of dairy farms earned €30,000 or less, while 22% earned €100,000 or more. On a per labour unit supplied, i.e. unpaid labour, 9% of farms achieved an income per labour unit of €100,000 or more.

## Overview of the Cattle Rearing system

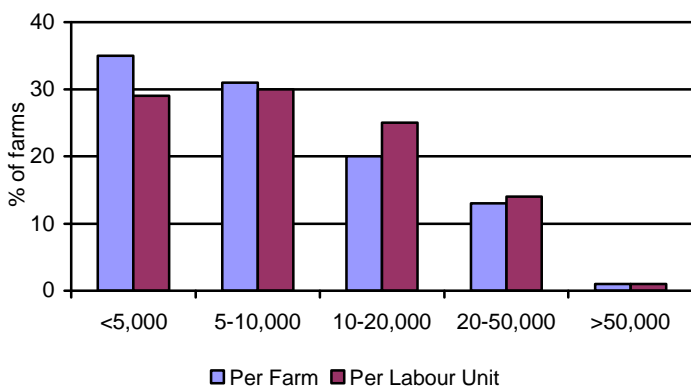
There are approximately 26,800 cattle rearing farms represented in the NFS in 2011, suckler cow production is the dominant system on these farms. The average FFI on these farms in 2011 was **€10,453 a 48% increase on the 2010 level**. On the back of strong cattle prices, market based gross output increased by 29% from 2010 to 2011, see Figure 11. The total value of direct payments declined slightly in 2011 but still comprised 44% of total gross output compared to 50% in 2010.

**Figure 11: Components of Family Farm Income for Cattle Rearing farms in 2011 and percentage change from 2010**



Total production costs declined marginally on cattle rearing farms in 2011. Despite the considerable increase in incomes on cattle rearing farms, the reliance on direct payments remains high. In 2011 the average family farm income, before direct payments, was approximately -€2,954.

**Figure 12: Income Distribution Cattle Rearing Farms**

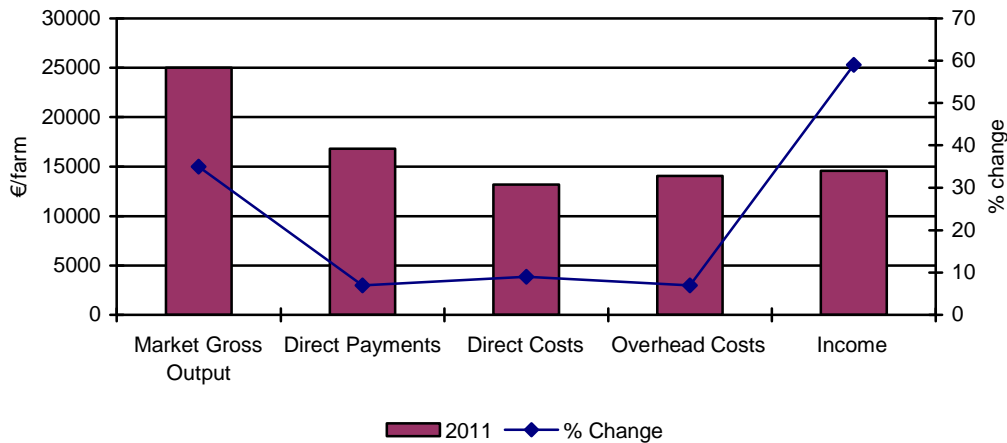


Over one in three cattle rearing farms earned less than €5,000 in 2011 with only 1% earning more than €50,000. On a per labour unit basis the incomes achieved are higher, with 29% earning less than €5,000 and 17% earning more than €20,000.

## Overview of the Cattle Other system

There were approximately 34,200 Cattle Other farms with an **average FFI of €14,573** in 2011, a **59% increase on 2010** (Figure 13). With only marginal increases in production costs, the cattle other system farms also benefited from strong cattle and sheep prices and market based gross output increased by 35% from 2010 to 2011.

**Figure 13: Components of Family Farm Income for Cattle Other farms in 2011 and percentage change from 2010**



As with the cattle rearing farms, income per farm on cattle other farms remains low and is highly dependent on subsidies. The average family farm income on these farms before subsidies in 2011 was -€2,222.

**Figure 14: Income Distribution Cattle Other Farms**

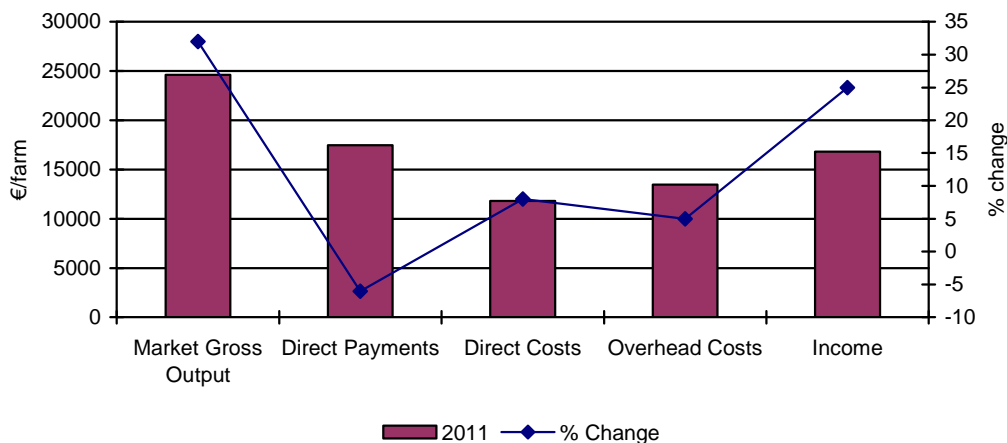


Almost a third of all cattle other farms earned less than €5,000 per farm, while about 5%, or 1,800 farms, earned over €50,000 per farm. On a per labour unit basis the incomes achieved are higher, with just 26% earning less than €5,000.

## Overview of the Sheep farm system

There are approximately 15,200 mainly sheep farms. Sheep **FFI increased by 25%** in 2011 to **€16,805**. This increase in income was entirely market driven as subsidies declined and production costs increased. **Market gross output increased by 32%** on sheep farms. These mainly sheep farms benefited from gains in both cattle and sheep prices and increased production accordingly, with the number of cattle and sheep livestock units increasing by 4% and 3% respectively.

**Figure 15: Components of Family Farm Income for Sheep farms in 2011 and percentage change from 2010**



The value of REPS payments fell by 37% and while some of this loss was off-set by the introduction of AEOS, the total value of direct payments declined by 6%. Direct payments comprised 42% of gross output on sheep farms and just over 104% of income. Production costs increased in line with animal numbers and total input expenditure increased by 6%.

**Figure 16: Income Distribution Sheep Farms**

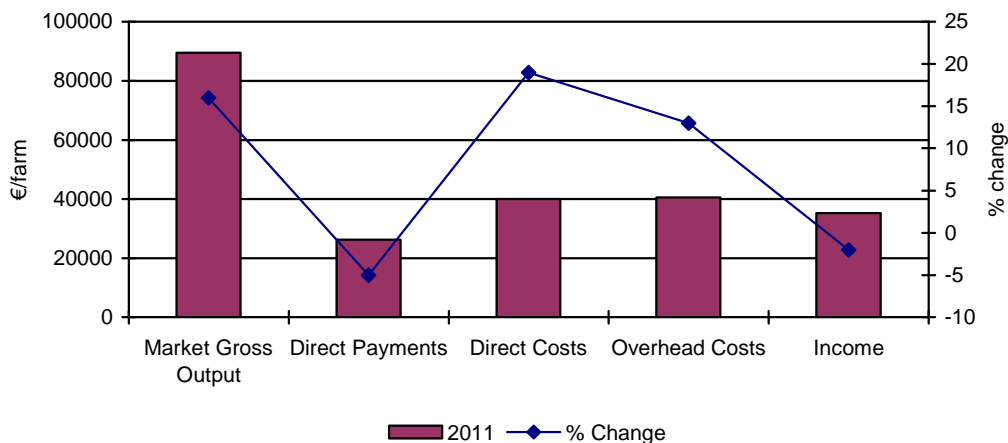


One in three sheep farms had a FFI of between €10,000 and €20,000 in 2011. The story is mixed on a per labour unit basis. There are a large number of farms with low incomes per labour unit, i.e. less than €5,000, but on 36% of farms an income per labour unit of €20,000 or more was achieved.

## Overview of the Tillage system

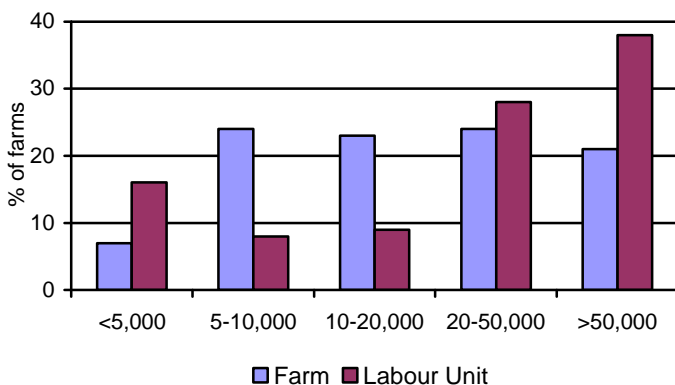
Average FFI was relatively unchanged in 2011 on the almost 7,600 tillage farms. **Market gross output increased by 16%** on tillage farms. While the output of many cereal crops increased considerably, especially oats and malting barley, a loss of 8% on the output of potatoes reduced the overall output gain. Reductions in REPS payments led to a 5% decline in direct payments on tillage farms. Direct payments comprised 23% of gross output on tillage farms and 74% of income.

**Figure 17: Components of Family Farm Income for Tillage farms in 2011 and percentage change from 2010**



Fertiliser comprises a larger proportion of direct costs on tillage farms than on the other farm systems. As 2011 was a high cost year for fertiliser, total direct costs on tillage farms increased by more than on the other farm systems. Direct costs are up 19% and overhead costs are up 13%. The increase in overhead costs is mostly driven by machinery operating costs.

**Figure 18: Income Distribution Tillage Farms**

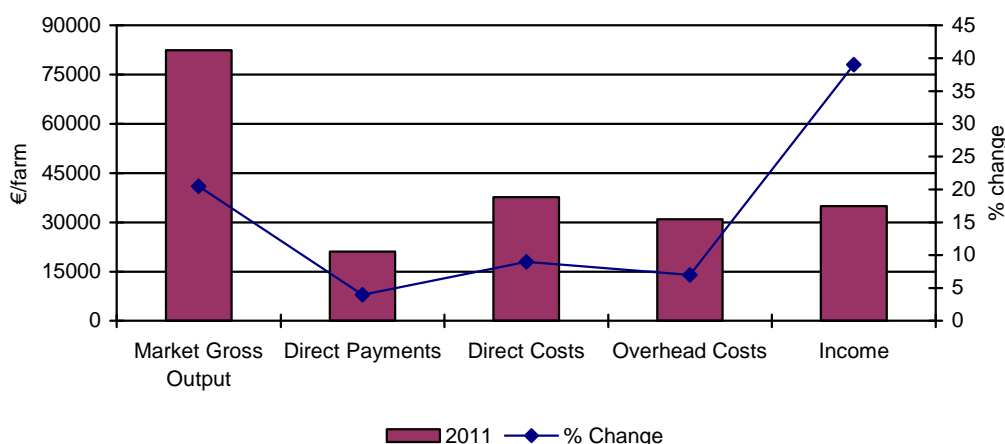


Approximately one-third of tillage farms earned a farm income of less than €10,000 in 2011. While 21% of farms produced a FFI of €50,000 or greater, the relatively low usage of unpaid labour meant that an income of €50,000 per labour unit or greater was achieved on 38% of farms.

## Overview of the Mixed Livestock system

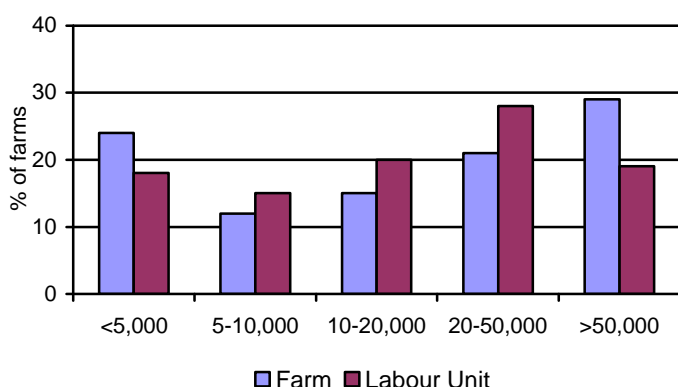
There are almost 6,000 mixed livestock farms represented in the NFS in 2011, the majority of these farms have a dairy enterprise but it is not the dominant system on the farm, hence the title “mixed livestock”. **Mixed livestock FFI increased by 39%.** This was output driven as direct payments declined and costs increased slightly. **Market gross output increased by almost 21%** in 2011 relative to 2010. Dairy accounts for 47% of output in this system and this increased by almost 20% in 2011 compared to 2010. Cattle is the second most important enterprise and this increased by 20%.

**Figure 19: Components of Family Farm Income for Mixed Livestock farms in 2011 and percentage change from 2010**



The value of direct payments increased by 4% and continued to comprise 20% of gross output and 61% of income. Direct and overhead costs increased by 9 and 7% respectively.

**Figure 20: Income Distribution Mixed Livestock Farms**



Approximately one-quarter of mixed livestock farms earned a farm income of less than €5,000 in 2011, while almost one-third earned an income €50,000 or greater. On a per labour unit basis, just 18% of farms had an income per labour unit of less than €5,000.

## Regional Analysis

Farms in the NFS are divided into 8 regions<sup>1</sup>. Here results are presented for 7 of these regions. Dublin is excluded due to the small sample size. Figure 21 presents the average FFI and total direct payments as a percentage of FFI for each region in 2011. FFI is quite variable across the regions, ranging from €14,040 in the Border region to €40,664 in the Southeast region. Reliance on direct payments is highest in the Border and West regions, comprising on average 100% of income.

**Figure 21: Average FFI and Direct Payments as a % FFI, by Region - 2011**

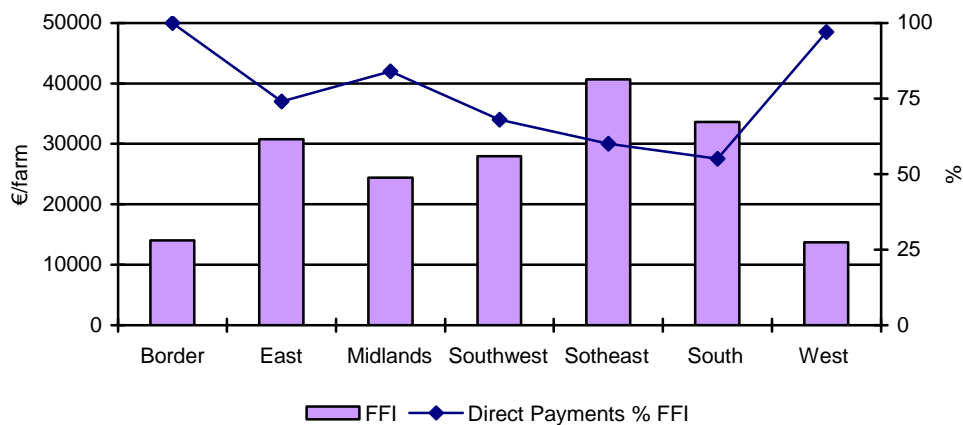
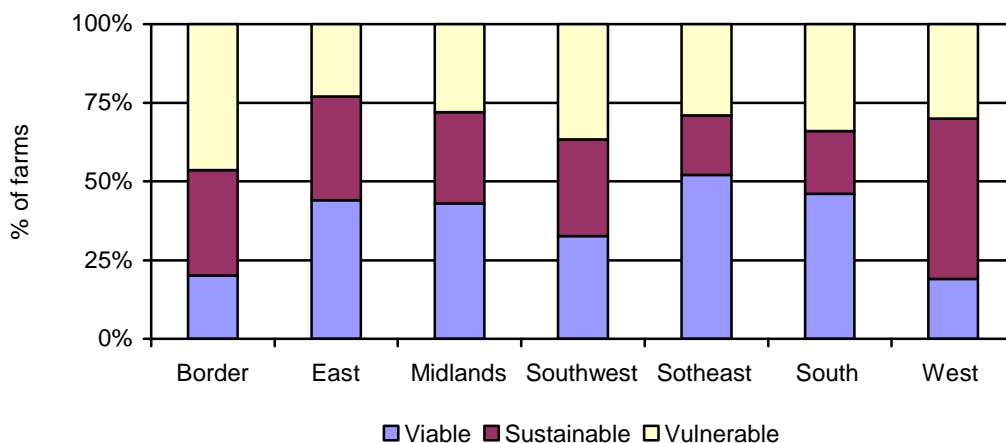


Figure 22 classifies the 2011 farm population on the basis of viability. The largest number of viable farms is in the Southeast region, while the Border region has the largest proportion of vulnerable farms.

**Figure 22: Classification of the 2011 Farm Population by region**



<sup>1</sup>

Region 1 – **Border**: Louth, Leitrim, Sligo, Cavan, Donegal, Monaghan  
 Region 4 – **Midlands**: Laois, Longford, Offaly, Westmeath  
 Region 6 – **Southeast**: Carlow, Kilkenny, Wexford, Tipp. S.R., Waterford.  
 Region 8 – **West**: Galway, Mayo, Roscommon

Region 3 – **East**: Kildare, Meath, Wicklow.  
 Region 5 – **Southwest**: Clare, Limerick, Tipp. N.R.  
 Region 7 – **South**: Cork, Kerry



## APPENDIX A

### LIST OF TABLES

TABLE - 01a	Farm Financial Results by Size (UAA-ha)	-- Dairying System
TABLE - 01b	Resources per Farm by Size (UAA-ha)	-- Dairying System
TABLE - 01c	Gross Output and Direct Payments by Size (UAA-ha)	-- Dairying System
TABLE - 01d	Direct and Overhead costs by size (UAA-ha)	-- Dairying System
TABLE - 01e	Demographic Data by size (UAA-ha)	-- Dairying System
TABLE - 02a	Farm Financial Results by Size (UAA-ha)	-- Cattle Rearing System
TABLE - 02b	Resources per Farm by Size (UAA-ha)	-- Cattle Rearing System
TABLE - 02c	Gross Output and Direct Payments by Size (UAA-ha)	-- Cattle Rearing System
TABLE - 02d	Direct and Overhead Costs by Size (UAA-ha)	-- Cattle Rearing System
TABLE - 02e	Demographic Data by Size (UAA-ha)	-- Cattle Rearing System
TABLE - 03a	Farm Financial Results by Size (UAA-ha)	-- Cattle Other System
TABLE - 03b	Resources per Farm by Size (UAA-ha)	-- Cattle Other System
TABLE - 03c	Gross Output and Direct Payments by Size (UAA-ha)	-- Cattle Other System
TABLE - 03d	Direct and Overhead Costs by Size (UAA-ha)	-- Cattle Other System
TABLE - 03e	Demographic Data by Size (UAA-ha)	-- Cattle Other System
TABLE - 04a	Farm Financial Results by Size (UAA-ha)	-- Sheep System
TABLE - 04b	Resources per Farm by Size (UAA-ha)	-- Sheep System
TABLE - 04c	Gross Output and Direct Payments by Size (UAA-ha)	-- Sheep System
TABLE - 04d	Direct and Overhead Costs by Size (UAA-ha)	-- Sheep System
TABLE - 04e	Demographic Data by Size (UAA-ha)	-- Sheep System
TABLE - 05a	Farm Financial Results by Size (UAA-ha)	-- Tillage System
TABLE - 05b	Resources per Farm by Size (UAA-ha)	-- Tillage System
TABLE - 05c	Gross Output and Direct Payments by Size (UAA-ha)	-- Tillage System
TABLE - 05d	Direct and Overhead Costs by Size (UAA-ha)	-- Tillage System
TABLE - 05e	Demographic Data by Size (UAA-ha)	-- Tillage System
TABLE - 06a	Farm Financial Results by Size (UAA-ha)	-- Mixed Livestock System
TABLE - 06b	Resources per Farm by Size (UAA-ha)	-- Mixed Livestock System
TABLE - 06c	Gross Output and Direct Payments by Size (UAA-ha)	-- Mixed Livestock System
TABLE - 06d	Direct and Overhead Costs by Size (UAA-ha)	-- Mixed Livestock System
TABLE - 06e	Demographic Data by Size (UAA-ha)	-- Mixed Livestock System
TABLE - 07a	Farm Financial Results by Size (UAA-ha)	-- All Systems
TABLE - 07b	Resources per Farm by size (UAA-ha)	-- All Systems
TABLE - 07c	Gross Output and Direct Payments by Size (UAA-ha)	-- All Systems
TABLE - 07d	Direct and Overhead Costs by Size (UAA-ha)	-- All Systems
TABLE - 07e	Demographic Data by Size (UAA-ha)	-- All Systems
TABLE - 08a	Farm Financial Results by System of Farming	-- All Farms
TABLE - 08b	Resources per Farm by System of Farming	-- All Farms
TABLE - 08c	Gross Output and Direct Payments by System of Farming	-- All Farms
TABLE - 08d	Direct and Overhead Costs by System of Farming	-- All Farms
TABLE - 08e	Demographic Data by System of Farming	-- All Farms

TABLE - 09a	Farm Financial Results by European Size (ESU)	-- All Farms
TABLE - 09b	Resources per Farm by European Size (ESU)	-- All Farms
TABLE - 09c	Gross Output and Direct Payments by European Size (ESU)	-- All Farms
TABLE - 09d	Direct and Overhead Costs by European Size (ESU)	-- All Farms
TABLE - 09e	Demographic Data by European Size (ESU)	-- All Farms
TABLE - 10a	Farm Financial Results by System of Farming	-- Full-Time Farms
TABLE - 10b	Resources per Farm by System of Farming	-- Full-Time Farms
TABLE - 10c	Gross Output and Direct Payments by System of Farming	-- Full-Time Farms
TABLE - 10d	Direct and Overhead Costs by System of Farming	-- Full-Time Farms
TABLE - 10e	Demographic Data by System of Farming	-- Full-Time Farms
TABLE - 11a	Farm Financial Results by System of Farming	-- Part-Time Farms
TABLE - 11b	Resources per Farm by System of Farming	-- Part-Time Farms
TABLE - 11c	Gross Output and Direct Payments by System of Farming	-- Part-Time Farms
TABLE - 11d	Direct and Overhead Costs by System of Farming	-- Part-Time Farms
TABLE - 11e	Demographic Data by System of Farming	-- Part-Time Farms
TABLE - 12a	Farm Financial Results by System of Farming	-- Objective One Region
TABLE - 12b	Resources per Farm by System of Farming	-- Objective One Region
TABLE - 12c	Gross Output and Direct Payments by System of Farming	-- Objective One Region
TABLE - 12d	Direct and Overhead Costs by System of Farming	-- Objective One Region
TABLE - 12e	Demographic Data by System of Farming	-- Objective One Region
TABLE - 13a	Farm Financial Results by System of Farming	-- Non-Objective One Region
TABLE - 13b	Resources per Farm by System of Farming	-- Non-Objective One Region
TABLE - 13c	Gross Output and Direct Payments by System of Farming	-- Non-Objective One Region
TABLE - 13d	Direct and Overhead Costs by System of Farming	-- Non-Objective One Region
TABLE - 13e	Demographic Data by System of Farming	-- Non-Objective One Region
TABLE - 14a	Farm Financial Results	-- By Region - All Farms
TABLE - 14b	Resources per Farm	-- By Region - All Farms
TABLE - 14c	Gross Output and Direct Payments	-- By Region - All Farms
TABLE - 14d	Direct and Overhead Costs	-- By Region - All Farms
TABLE - 14e	Demographic Data	-- By Region - All Farms
TABLE - 15a	(2010) - Farm Financial Results by System of Farming	-- All Farms
TABLE - 15b	(2010) - Resources per Farm by System of Farming	-- All Farms
TABLE - 15c	(2010) - Gross Output and Direct Payments by System of Farming	-- All Farms
TABLE - 15d	(2010) - Direct and Overhead Costs by System of Farming	-- All Farms
TABLE - 15e	(2010) - Demographic Data by System of Farming	-- All Farms



**Table - 01B (2011) Resources per Farm by Size (UAA - Ha) - Dairying System**

Size (UAA-Ha)	2 - < 10	10 - < 20	20 - < 30	30 - < 50	50 - < 100	>= 100	Hill Farms	All Sizes
<b>No. of Farms in Sample</b>	2	8	20	74	113	26	12	255
<b>Per Cent of Population</b>	0	0.7	1.5	4.8	5.8	0.9	0.7	14.7
<b>LAND (ha)</b>								
Area Owned	0	0	24.5	34.8	54.4	100.9	41.2	45.4
Total Area	0	0	26.5	41.9	71.4	133.3	52.4	57.3
Tillage	0	0	0	0.9	3.2	9.8	0	2.2
of which Total Cereals	0	0	0	0	1.5	0	0	1.1
" Potatoes	0	0	0	0	0	0	0	0
Grassland Silage	0	0	10.2	15.1	23.6	39.3	13.8	19.1
Hay	0	0	0.1	0.3	0.4	1.8	0	0.4
Pasture	0	0	14.5	23	38.6	67.9	28.9	30.8
Rough Grazing	0	0	0.5	0.2	1.9	4.9	8.3	1.6
<b>U.A.A</b>	<b>0</b>	<b>0</b>	<b>25.2</b>	<b>40</b>	<b>68.3</b>	<b>127.8</b>	<b>51.1</b>	<b>54.8</b>
Remainder of Farm	0	0	1.2	1.9	3.1	5.5	1.3	2.5
Forage & Crop Acreage	0	0	25	39.8	66.8	121.5	45.5	53.5
<b>LIVESTOCK</b>								
<b>Cattle</b>								
Dairy Cows	0	0	32.3	51.6	83.7	137.6	45.3	66.2
Other Cows	0	0	1	0.6	2	3.4	1.6	1.4
Heifers-in-Calf	0	0	2.8	5.5	12.8	24.1	5.9	9.2
< 1 Year Old	0	0	15.7	27.1	52	79.6	35	38.9
1 - 2 Year Old Male	0	0	1.3	2.7	7.4	12.6	10.3	5.5
1 - 2 Year Old Female	0	0	4.3	9.5	16.9	25.9	10.8	12.8
=> 2 Year Old Male	0	0	0.4	0.1	0.9	0.8	1	0.5
=> 2 Year Old Female	0	0	1	1.8	2	2.1	1.4	1.8
Bulls	0	0	0.5	0.7	1.2	2	0.8	0.9
<b>Total Cattle</b>	<b>0</b>	<b>0</b>	<b>58.9</b>	<b>98.9</b>	<b>178</b>	<b>286.4</b>	<b>111.5</b>	<b>136.5</b>
<b>Sheep (avg. no)</b>								
Ewes	0	0	0.5	1.5	1.5	5.9	0	1.6
Other Sheep	0	0	0.4	1.3	2	11.4	0	2
Total Sheep	0	0	0.9	2.8	3.5	17.3	0	3.6
<b>Grazing Livestock Units</b>								
Dairy Cows	0	0	32.3	51.6	83.7	137.6	45.3	66.2
Other Cattle	0	0	12.7	22.6	46.3	73.4	33.3	34.3
Sheep	0	0	0.1	0.3	0.5	2.2	0	0.4
Horses	0	0	0	0.1	0.2	0.4	0	0.1
<b>Total Livestock Units</b>	<b>0</b>	<b>0</b>	<b>45.1</b>	<b>74.6</b>	<b>130.6</b>	<b>213.6</b>	<b>78.6</b>	<b>101.1</b>
<b>LABOUR UNITS</b>								
Family	0	0	1.33	1.29	1.41	1.73	1.58	1.38
Total	0	0	1.35	1.37	1.74	2.69	1.66	1.6

**Table - 01C (2011) Gross Output and Direct Payments by Size (UAA - Ha) - Dairying System**

Size (UAA-Ha)	2 - < 10	10 - < 20	20 - < 30	30 - < 50	50 - < 100	>= 100	Hill Farms	All Sizes
<b>No. of Farms in Sample</b>	2	8	20	74	113	26	12	255
<b>Per Cent of Population</b>	0	0.7	1.5	4.8	5.8	0.9	0.7	14.7
<b>(€) GROSS OUTPUT</b>								
<b>LIVESTOCK</b>								
Dairying	0	0	51380	98045	159043	269765	71931	124674
of which milk	0	0	49711	94788	154758	269503	65366	121295
Cattle	0	0	9293	17211	36073	63821	22082	26677
of which Suckler Welfare Scheme	0	0	0	0	0	0	35	2
Sheep & Wool	0	0	78	166	283	1244	31	260
of which Sheep Welfare Scheme	0	0	6	13	17	64	15	17
Pigs	0	0	0	0	0	0	0	0
Poultry	0	0	0	0	0	0	0	0
Horses	0	0	0	0	124	-2019	0	-86
Other	0	0	0	0	0	0	0	0
<b>Sub-Total Livestock</b>	<b>0</b>	<b>0</b>	<b>60751</b>	<b>115422</b>	<b>195523</b>	<b>332811</b>	<b>94044</b>	<b>151525</b>
of which Disease Compensation	0	0	0	177	353	0	98	203
<b>CROPS</b>								
Wheat	0	0	0	0	0	0	0	265
Barley - Feeding	0	0	0	0	1162	0	0	835
Barley - Malting	0	0	0	0	0	0	0	114
Oats	0	0	0	0	0	0	0	68
Potatoes	0	0	0	0	0	0	0	106
Other	0	0	0	411	398	2485	44	462
of which Forestry Premium	0	0	0	185	172	1215	0	210
<b>Sub-Total Crops</b>	<b>0</b>	<b>0</b>	<b>0</b>	<b>988</b>	<b>2479</b>	<b>8022</b>	<b>44</b>	<b>1850</b>
<b>TOTAL LIVESTOCK &amp; CROPS</b>	<b>0</b>	<b>0</b>	<b>60751</b>	<b>116410</b>	<b>198001</b>	<b>340833</b>	<b>94087</b>	<b>153375</b>
+ Machinery Hire Revenue	0	0	152	32	89	2239	143	219
+ Other Current Receipts	0	0	69	175	494	944	352	345
+ Decoupled Direct Payments / Subs	0	0	9794	18165	27787	46302	20988	22489
of which Single Farm Payment	0	0	7277	13127	22493	40435	13230	17630
" REPS	0	0	1016	3184	3294	3747	4494	2953
" DAS	0	0	1451	1806	1746	1936	2725	1745
" Other Subsidies	0	0	235	491	803	973	974	618
AEOS	0	0	0	18	0	0	0	6
+ Income from Land Let	0	0	0	5	185	210	0	157
+ Income from Quota Let	0	0	0	6	58	84	57	34
- Inter-Enterprise Transfers	0	0	917	1707	3253	7571	1555	2582
<b>TOTAL GROSS OUTPUT</b>	<b>0</b>	<b>0</b>	<b>69914</b>	<b>133073</b>	<b>223395</b>	<b>383192</b>	<b>114242</b>	<b>174071</b>

**Table - 01D (2011) Direct and Overhead Costs by Size (UAA - Ha) - Dairying System**

Size (UAA-Ha)	2 - < 10	10 - < 20	20 - < 30	30 - < 50	50 - < 100	>= 100	Hill Farms	All Sizes
<b>No. of Farms in Sample</b>	2	8	20	74	113	26	12	255
<b>Per Cent of Population</b>	0	0.7	1.5	4.8	5.8	0.9	0.7	14.7
<b>DIRECT COSTS (€)</b>								
Purchased Concentrates	0	0	9079	16144	26203	57160	12604	21632
Purchased Bulky Feed	0	0	788	1141	2821	2543	829	1840
Fertiliser	0	0	4438	8645	14209	26413	8545	11316
Crop Protection	0	0	168	431	868	2386	228	682
Purchased Seed	0	0	218	519	1005	2593	483	803
Hire of Machinery	0	0	3308	6338	9412	14552	6570	7593
Transport	0	0	223	381	303	1815	242	420
Livestock (A.I. Vet etc.)	0	0	3887	6696	11069	22915	5604	8937
Casual Labour	0	0	200	685	571	516	132	522
Other	0	0	2957	5078	9181	15975	3581	7015
<b>Sub-Total</b>	<b>0</b>	<b>0</b>	<b>25266</b>	<b>46058</b>	<b>75641</b>	<b>146868</b>	<b>38818</b>	<b>60761</b>
Fodder Crop Adjustment	0	0	219	-361	-1273	-1375	-836	-744
<b>TOTAL DIRECT COSTS</b>	<b>0</b>	<b>0</b>	<b>25484</b>	<b>45697</b>	<b>74363</b>	<b>145503</b>	<b>37981</b>	<b>60016</b>
<b>OVERHEAD COSTS (€)</b>								
Rent of Conacre	0	0	343	2143	5510	10100	2246	3746
Car, Electricity, Phone	0	0	3342	4011	4957	7136	3200	4421
Current Hired Labour	0	0	98	750	6525	23563	1136	4490
Interest Charges	0	0	1417	1577	4039	11794	1865	3176
Machinery Depreciation	0	0	2680	5046	9276	15357	3615	6936
Machinery Operating	0	0	3939	7637	11490	28053	7057	9881
of which Fuel & Lub	0	0	1726	3224	5517	13630	2970	4571
Buildings Depreciation	0	0	1921	2602	4861	6476	2713	3595
Buildings Maintenance	0	0	696	1602	2600	3902	1240	1991
Land Improvement Depreciation	0	0	153	331	547	1090	151	427
Land Improvement Maintenance	0	0	806	1458	2305	2905	1708	1785
Lime	0	0	189	383	688	876	1082	531
Other	0	0	2748	4153	5886	10213	4699	5037
<b>OVERHEAD COSTS</b>	<b>0</b>	<b>0</b>	<b>18142</b>	<b>31309</b>	<b>57997</b>	<b>120589</b>	<b>29629</b>	<b>45486</b>
<b>TOTAL NET EXPENSES</b>	<b>0</b>	<b>0</b>	<b>43627</b>	<b>77006</b>	<b>132365</b>	<b>266082</b>	<b>67610</b>	<b>105503</b>
<b>Distribution - % of farms</b>								
<b>Costs % Output</b>	<b>0</b>	<b>0</b>	<b>62.2</b>	<b>58.1</b>	<b>58.8</b>	<b>68.4</b>	<b>60.8</b>	<b>60</b>

**Table - 01E (2011) Demographic Data by Size (UAA - Ha) - Dairying System**

Size (UAA-Ha)	2 - < 10	10 - < 20	20 - < 30	30 - < 50	50 - < 100	>= 100	Hill Farms	All Sizes
<b>No. of Farms in Sample</b>	2	8	20	74	113	26	12	255
<b>Per Cent of Population</b>	0	0.7	1.5	4.8	5.8	0.9	0.7	14.7
<b>Holder</b>								
Age of Holder	0	0	53.5	48.4	48.4	50.7	53	49.5
Marital Status - Married %	0	0	70	85.1	83.2	80.8	90.9	82.9
Widowed %	0	0	0	0	0	0	9.1	2
Single %	0	0	0	0	15.9	0	0	14.7
Separated %	0	0	0	0	0	0	0	0
= Total	100	100	100	100	100	100	100	100
<b>Household</b>								
Household Size (no.)	0	0	3.4	3.32	3.91	3.92	3.72	3.64
< 24 (no.)	0	0	0	1.18	1.67	1.69	1.52	1.42
< 24 % HH	0	0	0	58.1	65.5	73.1	70.6	61.4
25 - 44 (no.)	0	0	0	0.7	0.78	0	0.67	0.69
25 - 44 % HH	0	0	0	45.9	48.7	0	52.7	44.8
Demograph. Viable % HH	0	0	80	82.4	91.2	96.2	100	86.9
<b>Off-farm sources of income --</b>								
Off-farm Job % HH	0	0	50	54.1	47.8	0	63.5	50.1
Off-farm Job Holder % HH	0	0	0	0	0	0	9.1	8.4
Off-farm Job Spouse % HH	0	0	0	50	45.1	0	63.5	45.7
Pensioners (no.)	0	0	0	0	0.12	0	0.29	0.13
Pensioners % HH	0	0	0	0	9.7	0	18.3	10.3
Unemployment Etc. (no.)	0	0	0	0	0	0	0	0.05
Unemployment Etc. % HH	0	0	0	0	0	0	0	4.6
F.F.I. (€) < 5000	0	0	0	0	0	0	0	1
FFI 5000 - 10000	0	0	0	0	0	0	0	3
FFI 10000 - 20000	0	0	0	0	0	0	20	6
FFI 20000 - 30000	0	0	0	15	0	0	11	13
FFI 30000 - 50000	0	0	0	31	0	0	40	19
FFI 50000 - 70000	0	0	0	20	15	0	9	14
FFI70TO100000	0	0	0	26	29	0	14	22
>1 00000	0	0	0	0	42	58	5	22





**Table - 02B (2011) Resources per Farm by Size (UAA - Ha) - Cattle Rearing System**

Size (UAA-Ha)	2 - < 10	10 - < 20	20 - < 30	30 - < 50	50 - < 100	>= 100	Hill Farms	All Sizes
<b>No. of Farms in Sample</b>	2	22	43	66	30	7	23	193
<b>Per Cent of Population</b>	1	5.6	6.9	6.4	2.2	0.2	2.8	25.4
<b>LAND (ha)</b>								
Area Owned	0	15	23.9	35	60.6	0	30.6	29
Total Area	0	15.9	26.3	40	68.2	0	35	32.5
Tillage	0	0	0	0	0.4	0	0	0.1
of which Total Cereals	0	0	0	0	0	0	0	0.1
" Potatoes	0	0	0	0	0	0	0	0
Grassland Silage	0	4.5	6.6	9.3	13.8	0	5.8	7.4
Hay	0	0.5	0.6	0.9	2.7	0	0.2	0.8
Pasture	0	10.2	16.3	23.7	37	0	16.5	18.7
Rough Grazing	0	0.1	1	2.9	7.6	0	9.8	2.9
<b>U.A.A</b>	<b>0</b>	<b>15.3</b>	<b>25.1</b>	<b>38.3</b>	<b>65.1</b>	<b>0</b>	<b>33.9</b>	<b>31.1</b>
Remainder of Farm	0	0.6	1.2	1.7	3.1	0	1.1	1.4
Forage & Crop Acreage	0	15.2	24.1	36.1	55.8	0	27.7	28.5
<b>LIVESTOCK</b>								
<b>Cattle</b>								
Dairy Cows	0	0	0	0	0	0	0	0
Other Cows	0	13.3	17.9	23.3	41.7	0	15.6	20.5
Heifers-in-Calf	0	0.6	1	1.7	2.1	0	0.7	1.2
< 1 Year Old	0	11.3	14.1	19.2	37.8	0	12.2	17
1 - 2 Year Old Male	0	0.9	1.8	2.4	2.9	0	1.2	1.8
1 - 2 Year Old Female	0	1.7	3.2	4.4	7	0	2.2	3.5
=> 2 Year Old Male	0	0.1	0.1	0.4	0.2	0	0.2	0.2
=> 2 Year Old Female	0	0.4	0.8	1.2	1.6	0	0.6	0.8
Bulls	0	0.4	0.6	0.7	1.5	0	0.4	0.6
<b>Total Cattle</b>	<b>0</b>	<b>28.7</b>	<b>39.4</b>	<b>53.4</b>	<b>94.9</b>	<b>0</b>	<b>33</b>	<b>45.6</b>
<b>Sheep (avg. no)</b>								
Ewes	0	0.9	1.1	1.6	9.6	0	1.5	2.2
Other Sheep	0	0.8	1.3	3.3	8.6	0	3	2.7
Total Sheep	0	1.6	2.4	4.9	18.2	0	4.4	4.9
<b>Grazing Livestock Units</b>								
Dairy Cows	0	0	0	0	0	0	0	0
Other Cattle	0	18.2	25.7	34.7	59.9	0	21.5	29.4
Sheep	0	0.2	0.3	0.7	2.5	0	0.6	0.7
Horses	0	0.1	0.2	0.1	0.3	0	0.4	0.2
<b>Total Livestock Units</b>	<b>0</b>	<b>18.6</b>	<b>26.2</b>	<b>35.4</b>	<b>62.8</b>	<b>0</b>	<b>22.4</b>	<b>30.2</b>
<b>LABOUR UNITS</b>								
Family	0	0.87	0.91	1.05	1.11	0	0.88	0.94
Total	0	0.87	0.91	1.06	1.18	0	0.89	0.95

Table - 02C (2011) Gross Output and Direct Payments by Size (UAA - Ha) - Cattle Rearing System

Size (UAA-Ha)	2 - < 10	10 - < 20	20 - < 30	30 - < 50	50 - < 100	>= 100	Hill Farms	All Sizes
<b>No. of Farms in Sample</b>	2	22	43	66	30	7	23	193
<b>Per Cent of Population</b>	1	5.6	6.9	6.4	2.2	0.2	2.8	25.4
<b>(€) GROSS OUTPUT</b>								
<b>LIVESTOCK</b>								
Dairying	0	0	0	0	0	0	0	0
of which milk	0	0	0	0	0	0	0	0
Cattle	0	10309	12873	20658	35905	0	12738	16796
of which Suckler Welfare Scheme	0	393	410	806	1411	0	334	595
Sheep & Wool	0	122	136	392	1320	0	296	345
of which Sheep Welfare Scheme	0	0	13	28	85	0	3	21
Pigs	0	0	0	0	0	0	0	0
Poultry	0	0	0	0	0	0	0	0
Horses	0	0	9	32	106	0	-48	3
Other	0	0	0	0	0	0	0	0
<b>Sub-Total Livestock</b>	<b>0</b>	<b>10431</b>	<b>13019</b>	<b>21082</b>	<b>37331</b>	<b>0</b>	<b>12986</b>	<b>17144</b>
of which Disease Compensation	0	0	13	120	0	0	0	75
<b>CROPS</b>								
Wheat	0	0	0	0	0	0	0	0
Barley - Feeding	0	0	0	0	0	0	38	55
Barley - Malting	0	0	0	0	0	0	0	0
Oats	0	0	0	0	0	0	0	3
Potatoes	0	0	0	0	0	0	0	1
Other	0	347	334	631	2042	0	506	612
of which Forestry Premium	0	0	141	377	1396	0	439	354
<b>Sub-Total Crops</b>	<b>0</b>	<b>347</b>	<b>334</b>	<b>647</b>	<b>2373</b>	<b>0</b>	<b>544</b>	<b>671</b>
<b>TOTAL LIVESTOCK &amp; CROPS</b>	<b>0</b>	<b>10778</b>	<b>13353</b>	<b>21729</b>	<b>39704</b>	<b>0</b>	<b>13530</b>	<b>17816</b>
+ Machinery Hire Revenue	0	0	276	523	352	0	922	423
+ Other Current Receipts	0	57	44	377	236	0	4	149
+ Decoupled Direct Payments / Subs	0	6148	9152	17136	23388	0	12436	12362
of which Single Farm Payment	0	4241	5535	10772	18533	0	5989	8079
" REPS	0	712	1361	3551	2104	0	3497	2019
" DAS	0	1166	1753	2685	2392	0	2681	2021
" Other Subsidies	0	28	516	157	444	0	273	263
AEOS	0	28	503	69	223	0	0	181
+ Income from Land Let	0	0	33	342	481	0	0	137
+ Income from Quota Let	0	0	0	0	0	0	0	0
- Inter-Enterprise Transfers	0	0	2	13	0	0	8	14
<b>TOTAL GROSS OUTPUT</b>	<b>0</b>	<b>16954</b>	<b>22352</b>	<b>40026</b>	<b>64435</b>	<b>0</b>	<b>26901</b>	<b>30745</b>

**Table - 02D (2011) Direct and Overhead Costs by Size (UAA - Ha) - Cattle Rearing System**

Size (UAA-Ha)	2 - < 10	10 - < 20	20 - < 30	30 - < 50	50 - < 100	>= 100	Hill Farms	All Sizes
<b>No. of Farms in Sample</b>	2	22	43	66	30	7	23	193
<b>Per Cent of Population</b>	1	5.6	6.9	6.4	2.2	0.2	2.8	25.4
<b>DIRECT COSTS (€)</b>								
Purchased Concentrates	0	1149	1756	2555	4601	0	2090	2193
Purchased Bulky Feed	0	186	340	287	540	0	197	312
Fertiliser	0	1294	1773	2396	4393	0	1546	2131
Crop Protection	0	76	64	94	212	0	98	95
Purchased Seed	0	20	56	110	146	0	87	78
Hire of Machinery	0	1309	1914	2581	3727	0	1749	2128
Transport	0	12	44	70	89	0	44	48
Livestock (A.I. Vet etc.)	0	1054	1451	1888	3398	0	1211	1634
Casual Labour	0	0	0	13	543	0	68	59
Other	0	637	744	989	1604	0	558	871
<b>Sub-Total</b>	<b>0</b>	<b>5735</b>	<b>8141</b>	<b>10983</b>	<b>19254</b>	<b>0</b>	<b>7648</b>	<b>9551</b>
Fodder Crop Adjustment	0	-28	-152	-298	-538	0	-276	-225
<b>TOTAL DIRECT COSTS</b>	<b>0</b>	<b>5707</b>	<b>7989</b>	<b>10631</b>	<b>18711</b>	<b>0</b>	<b>7372</b>	<b>9311</b>
<b>OVERHEAD COSTS (€)</b>								
Rent of Conacre	0	164	468	1076	1703	0	310	673
Car, Electricity, Phone	0	1173	1359	1735	2543	0	1680	1559
Current Hired Labour	0	31	73	127	778	0	0	214
Interest Charges	0	126	97	693	1208	0	215	384
Machinery Depreciation	0	924	1408	2441	3721	0	1267	1795
Machinery Operating	0	1375	2043	3372	5442	0	2626	2684
of which Fuel & Lub	0	667	978	1860	2612	0	1001	1359
Buildings Depreciation	0	431	619	1070	1300	0	853	783
Buildings Maintenance	0	410	479	638	835	0	302	521
Land Improvement Depreciation	0	62	138	134	141	0	101	117
Land Improvement Maintenance	0	372	657	780	935	0	372	617
Lime	0	41	10	301	203	0	63	122
Other	0	1046	1279	2243	3056	0	1320	1634
<b>OVERHEAD COSTS</b>	<b>0</b>	<b>6113</b>	<b>8619</b>	<b>14309</b>	<b>21661</b>	<b>0</b>	<b>9046</b>	<b>10980</b>
<b>TOTAL NET EXPENSES</b>	<b>0</b>	<b>11820</b>	<b>16608</b>	<b>24994</b>	<b>40377</b>	<b>0</b>	<b>16417</b>	<b>20306</b>
<b>Distribution - % of farms</b>								
<b>Costs % Output</b>	<b>0</b>	<b>69.4</b>	<b>75.6</b>	<b>67.1</b>	<b>63.9</b>	<b>0</b>	<b>59.2</b>	<b>69.1</b>





**Table - 03B (2011) Resources per Farm by Size (UAA - Ha) - Cattle Other System**

Size (UAA-Ha)	2 - < 10	10 - < 20	20 - < 30	30 - < 50	50 - < 100	>= 100	Hill Farms	All Sizes
<b>No. of Farms in Sample</b>	5	31	40	75	60	23	23	257
<b>Per Cent of Population</b>	2.5	7.9	6.4	7.3	4.4	0.8	2.8	32.4
<b>LAND (ha)</b>								
Area Owned	0	15.7	24.9	34.4	58.5	113.9	34.5	31.1
Total Area	0	16.9	26	40.2	68.4	134.4	37.6	35.2
Tillage	0	0.3	0.2	0.9	2.4	11.2	0	0.9
of which Total Cereals	0	0	0	0	2.1	8	0	0.7
" Potatoes	0	0	0	0	0	0	0	0
Grassland Silage	0	4.5	7	9.7	14.5	23.1	6.3	8
Hay	0	0.5	0.8	1	2.2	4.2	0.1	0.9
Pasture	0	9.8	16	24	41.3	84.4	18.6	20.9
Rough Grazing	0	0.3	0.7	1.6	3.2	5.3	5.8	1.7
<b>U.A.A</b>	<b>0</b>	<b>16.3</b>	<b>25</b>	<b>38.7</b>	<b>66.3</b>	<b>130.4</b>	<b>33.9</b>	<b>33.7</b>
Remainder of Farm	0	0.6	1.1	1.5	2.1	4	3.7	1.5
Forage & Crop Acreage	0	16.1	24.2	36.7	63.2	125	29.6	32.1
<b>LIVESTOCK</b>								
<b>Cattle</b>								
Dairy Cows	0	0	0	0	0	0	0	0
Other Cows	0	2.5	6.8	9.7	22.7	46.1	8.8	9.4
Heifers-in-Calf	0	0.4	0.8	1	2.5	3.4	0.8	1
< 1 Year Old	0	7.4	16.7	18.5	33.7	61.7	13.3	17.3
1 - 2 Year Old Male	0	7	10.9	15.7	27.2	53.5	9.3	13.9
1 - 2 Year Old Female	0	4.9	6.4	8.1	12.3	32.3	6	7.4
=> 2 Year Old Male	0	3.8	3.3	7.6	12.2	16.5	3.9	5.8
=> 2 Year Old Female	0	0.7	1.4	3.1	3	5.2	2.6	2
Bulls	0	0.1	0.3	0.4	0.8	1.6	0.3	0.3
<b>Total Cattle</b>	<b>0</b>	<b>26.9</b>	<b>46.7</b>	<b>63.9</b>	<b>114.5</b>	<b>220.2</b>	<b>45</b>	<b>57.3</b>
<b>Sheep (avg. no)</b>								
Ewes	0	2.4	7.3	7.8	24.9	51.7	4.3	8.9
Other Sheep	0	1.7	6.2	11.6	22.5	53.2	5.3	9.2
Total Sheep	0	4.1	13.5	19.3	47.3	104.9	9.6	18.1
<b>Grazing Livestock Units</b>								
Dairy Cows	0	0	0	0	0	0	0	0
Other Cattle	0	18.2	29.3	43.1	76.5	146.5	30	37.9
Sheep	0	0.6	1.9	2.6	6.4	13.8	1.3	2.4
Horses	0	0	0.2	0.4	0.4	1.5	0.5	0.2
<b>Total Livestock Units</b>	<b>0</b>	<b>18.8</b>	<b>31.4</b>	<b>46.1</b>	<b>83.3</b>	<b>161.8</b>	<b>31.8</b>	<b>40.6</b>
<b>LABOUR UNITS</b>								
Family	0	0.82	0.89	1	1.31	1.36	1.02	0.96
Total	0	0.83	0.9	1.04	1.38	1.48	1.04	0.99

**Table - 03C (2011) Gross Output and Direct Payments by Size (UAA - Ha) - Cattle Other System**

Size (UAA-Ha) <	2 - < 10	10 - < 20	20 - < 30	30 - < 50	50 - < 100	>= 100	Hill Farms	All Sizes
<b>No. of Farms in Sample</b>	5	31	40	75	60	23	23	257
<b>Per Cent of Population</b>	2.5	7.9	6.4	7.3	4.4	0.8	2.8	32.4
<b>(€) GROSS OUTPUT</b>								
<b>LIVESTOCK</b>								
Dairying	0	0	0	0	0	0	0	0
of which milk	0	0	0	0	0	0	0	0
Cattle	0	9168	16652	27244	43687	95861	16675	22208
of which Suckler Welfare Scheme	0	68	163	301	773	1552	296	288
Sheep & Wool	0	274	1053	1343	3708	7519	645	1336
of which Sheep Welfare Scheme	0	17	53	66	259	461	70	83
Pigs	0	0	0	0	0	0	0	0
Poultry	0	0	0	0	0	0	0	0
Horses	0	5	22	-43	207	41	77	32
Other	0	0	0	0	0	0	0	0
<b>Sub-Total Livestock</b>	<b>0</b>	<b>9447</b>	<b>17727</b>	<b>28544</b>	<b>47602</b>	<b>103421</b>	<b>17398</b>	<b>23577</b>
of which Disease Compensation	0	0	16	17	43	107	40	19
<b>CROPS</b>								
Wheat	0	0	0	0	0	0	0	81
Barley - Feeding	0	0	0	0	2243	8129	0	717
Barley - Malting	0	0	0	0	0	0	0	0
Oats	0	0	0	0	0	0	0	49
Potatoes	0	0	0	0	0	0	22	3
Other	0	285	410	1229	1530	3274	970	806
of which Forestry Premium	0	0	92	445	609	788	750	287
<b>Sub-Total Crops</b>	<b>0</b>	<b>348</b>	<b>549</b>	<b>2266</b>	<b>3964</b>	<b>12576</b>	<b>992</b>	<b>1656</b>
<b>TOTAL LIVESTOCK &amp; CROPS</b>	<b>0</b>	<b>9795</b>	<b>18276</b>	<b>30810</b>	<b>51566</b>	<b>115997</b>	<b>18390</b>	<b>25232</b>
+ Machinery Hire Revenue	0	0	1003	294	577	264	339	382
+ Other Current Receipts	0	26	32	235	289	386	96	123
+ Decoupled Direct Payments / Subs	0	7834	11886	21806	30486	57660	11798	16118
of which Single Farm Payment	0	5613	9028	16331	25160	49159	7906	12435
" REPS	0	953	995	3060	2549	5201	1268	1715
" DAS	0	1204	1619	2141	2173	2622	2518	1733
" Other Subsidies	0	81	297	340	863	1139	176	318
AEOS	0	64	193	152	282	0	0	127
+ Income from Land Let	0	0	818	346	77	470	529	310
+ Income from Quota Let	0	0	0	0	0	0	68	6
- Inter-Enterprise Transfers	0	95	68	403	894	4187	21	359
<b>TOTAL GROSS OUTPUT</b>	<b>0</b>	<b>17496</b>	<b>31952</b>	<b>53078</b>	<b>82002</b>	<b>171441</b>	<b>31225</b>	<b>41805</b>

**Table - 03D (2011) Direct and Overhead Costs by Size (UAA - Ha) - Cattle Other System**

Size (UAA-Ha)	2 - < 10	10 - < 20	20 - < 30	30 - < 50	50 - < 100	>= 100	Hill Farms	All Sizes
<b>No. of Farms in Sample</b>	5	31	40	75	60	23	23	257
<b>Per Cent of Population</b>	2.5	7.9	6.4	7.3	4.4	0.8	2.8	32.4
<b>DIRECT COSTS (€)</b>								
Purchased Concentrates	0	1863	3599	5667	9388	22210	2858	4635
Purchased Bulky Feed	0	54	248	415	763	4890	481	494
Fertiliser	0	1161	1813	3108	5652	11155	2383	2689
Crop Protection	0	70	42	274	486	1708	114	209
Purchased Seed	0	61	62	182	379	1253	90	161
Hire of Machinery	0	1595	2185	3399	4471	9418	1882	2689
Transport	0	60	113	289	391	1290	148	205
Livestock (A.I. Vet etc.)	0	606	1078	1846	2804	6078	977	1447
Casual Labour	0	0	37	217	149	33	7	78
Other	0	369	760	1100	1779	2755	566	900
<b>Sub-Total</b>	<b>0</b>	<b>5839</b>	<b>9936</b>	<b>16497</b>	<b>26264</b>	<b>60791</b>	<b>9505</b>	<b>13507</b>
Fodder Crop Adjustment	0	-169	-484	-211	-376	-1379	-327	-325
<b>TOTAL DIRECT COSTS</b>	<b>0</b>	<b>5667</b>	<b>9452</b>	<b>16280</b>	<b>25883</b>	<b>59412</b>	<b>9185</b>	<b>13180</b>
<b>OVERHEAD COSTS (€)</b>								
Rent of Conacre	0	306	660	1769	2406	5759	877	1168
Car, Electricity, Phone	0	1267	1409	1789	1800	2554	1473	1477
Current Hired Labour	0	87	91	361	1165	2534	251	367
Interest Charges	0	160	324	736	962	2588	136	479
Machinery Depreciation	0	1170	2270	2473	4588	8351	1739	2337
Machinery Operating	0	1642	2482	4477	7926	13463	2569	3666
of which Fuel & Lub	0	774	1166	2115	3844	7558	1236	1749
Buildings Depreciation	0	472	709	1307	1786	4182	608	980
Buildings Maintenance	0	321	442	816	1334	2047	318	625
Land Improvement Depreciation	0	61	119	181	241	491	53	130
Land Improvement Maintenance	0	383	707	1062	1205	2627	496	812
Lime	0	58	72	245	258	560	30	142
Other	0	1110	1738	2822	3395	5052	1365	2011
<b>OVERHEAD COSTS</b>	<b>0</b>	<b>6978</b>	<b>10952</b>	<b>17793</b>	<b>26809</b>	<b>49649</b>	<b>9885</b>	<b>14053</b>
<b>TOTAL NET EXPENSES</b>	<b>0</b>	<b>12647</b>	<b>20404</b>	<b>34078</b>	<b>52697</b>	<b>109061</b>	<b>19063</b>	<b>27234</b>
<b>Distribution - % of farms</b>								
<b>Costs % Output</b>	<b>0</b>	<b>74.8</b>	<b>64.3</b>	<b>66.7</b>	<b>66.5</b>	<b>61.2</b>	<b>60</b>	<b>68.7</b>







**Table - 04B (2011) Resources per Farm by Size (UAA - Ha) - Sheep System**

Size (UAA-Ha)	2 - < 10	10 - < 20	20 - < 30	30 - < 50	50 - < 100	>= 100	Hill Farms	All Sizes
<b>No. of Farms in Sample</b>	2	14	15	26	29	6	35	127
<b>Per Cent of Population</b>	0.7	2.1	2	3.1	1.7	0.3	4.1	14.4
<b>LAND (ha)</b>								
Area Owned	0	14.7	26.7	35.7	61.5	0	42.9	38
Total Area	0	16.5	26.9	39.7	74.1	0	50	43.1
Tillage	0	0.2	0.1	0.9	2.3	0	0	0.7
of which Total Cereals	0	0	0	0	0	0	0	0.5
" Potatoes	0	0	0	0	0	0	0	0
Grassland Silage	0	3.5	4.4	6.6	11.8	0	2.2	5.2
Hay	0	0.3	1	1.2	1.9	0	0.3	0.8
Pasture	0	8.1	16.4	27	45.3	0	21.6	23.6
Rough Grazing	0	1	3.1	1.8	8.4	0	22.6	9.3
<b>U.A.A</b>	<b>0</b>	<b>15.5</b>	<b>25.9</b>	<b>37.6</b>	<b>71.1</b>	<b>0</b>	<b>48.7</b>	<b>41.3</b>
Remainder of Farm	0	1	1	2.2	3	0	1.3	1.9
Forage & Crop Acreage	0	16.8	23.9	43.4	68.2	0	44.4	40.1
<b>LIVESTOCK</b>								
<b>Cattle</b>								
Dairy Cows	0	0	0	0	0	0	0	0
Other Cows	0	3.6	9	8.4	16.5	0	6.3	8.2
Heifers-in-Calf	0	0.2	0.9	0.6	0.9	0	0.4	0.6
< 1 Year Old	0	4.6	8.6	8	17.3	0	4.7	7.9
1 - 2 Year Old Male	0	2.6	3.3	4.2	10.4	0	0.7	3.5
1 - 2 Year Old Female	0	1.5	2.5	3.1	7.6	0	1.5	2.8
=> 2 Year Old Male	0	0.1	0.7	2.3	4.6	0	0.1	1.2
=> 2 Year Old Female	0	0.4	0.3	1.2	1.7	0	0.1	0.6
Bulls	0	0	0.5	0.4	0.8	0	0.2	0.3
<b>Total Cattle</b>	<b>0</b>	<b>13.1</b>	<b>25.8</b>	<b>28</b>	<b>59.7</b>	<b>0</b>	<b>14</b>	<b>25.1</b>
<b>Sheep (avg. no)</b>								
Ewes	0	59.8	72.6	139.5	178.7	0	118.5	121.3
Other Sheep	0	42.4	80.1	136	197.7	0	100.1	112.3
Total Sheep	0	102.1	152.7	275.5	376.3	0	218.7	233.6
<b>Grazing Livestock Units</b>								
Dairy Cows	0	0	0	0	0	0	0	0
Other Cattle	0	8.2	16.9	19.1	40.2	0	9.2	16.7
Sheep	0	13.7	19.5	35.2	48.9	0	24.3	28.9
Horses	0	0	0.4	0.3	0.1	0	0.6	0.3
<b>Total Livestock Units</b>	<b>0</b>	<b>21.9</b>	<b>36.8</b>	<b>54.6</b>	<b>89.1</b>	<b>0</b>	<b>34.1</b>	<b>45.9</b>
<b>LABOUR UNITS</b>								
Family	0	0.83	1	1.12	1.26	0	0.97	1.05
Total	0	0.83	1.01	1.13	1.44	0	0.98	1.08

**Table - 04C (2011) Gross Output and Direct Payments by Size (UAA - Ha) - Sheep System**

Size (UAA-Ha)	2 - < 10	10 - < 20	20 - < 30	30 - < 50	50 - < 100	>= 100	Hill Farms	All Sizes
<b>No. of Farms in Sample</b>	2	14	15	26	29	6	35	127
<b>Per Cent of Population</b>	0.7	2.1	2	3.1	1.7	0.3	4.1	14.4
<b>(€) GROSS OUTPUT</b>								
<b>LIVESTOCK</b>								
Dairying	0	0	0	0	0	0	15	4
of which milk	0	0	0	0	0	0	0	0
Cattle	0	6399	8740	11668	22177	0	5795	10080
of which Suckler Welfare Scheme	0	74	183	212	577	0	231	231
Sheep & Wool	0	7765	10850	19905	25487	0	8982	14809
of which Sheep Welfare Scheme	0	432	465	1120	1055	0	824	819
Pigs	0	0	0	0	140	0	0	17
Poultry	0	0	0	0	17	0	0	2
Horses	0	-450	0	54	0	0	58	-40
Other	0	0	0	0	0	0	0	0
<b>Sub-Total Livestock</b>	<b>0</b>	<b>13714</b>	<b>19590</b>	<b>31627</b>	<b>47820</b>	<b>0</b>	<b>14849</b>	<b>24872</b>
of which Disease Compensation	0	0	0	90	60	0	86	73
<b>CROPS</b>								
Wheat	0	0	0	0	0	0	0	24
Barley - Feeding	0	0	0	0	0	0	0	406
Barley - Malting	0	0	0	0	0	0	0	0
Oats	0	0	0	0	0	0	0	64
Potatoes	0	0	0	0	0	0	0	20
Other	0	96	173	43	1414	0	377	529
of which Forestry Premium	0	0	368	0	247	0	259	351
<b>Sub-Total Crops</b>	<b>0</b>	<b>229</b>	<b>213</b>	<b>893</b>	<b>3385</b>	<b>0</b>	<b>377</b>	<b>1043</b>
<b>TOTAL LIVESTOCK &amp; CROPS</b>	<b>0</b>	<b>13942</b>	<b>19803</b>	<b>32521</b>	<b>51206</b>	<b>0</b>	<b>15226</b>	<b>25916</b>
+ Machinery Hire Revenue	0	0	0	304	255	0	0	102
+ Other Current Receipts	0	2	69	26	309	0	215	194
+ Decoupled Direct Payments / Subs	0	9375	12704	16724	27702	0	15054	16012
of which Single Farm Payment	0	4930	7863	11588	20812	0	8066	10459
" REPS	0	2675	2576	2214	3766	0	3481	2807
" DAS	0	1752	2144	2670	2572	0	3058	2466
" Other Subsidies	0	450	587	1373	1606	0	1288	1103
AEOS	0	0	122	95	39	0	392	155
+ Income from Land Let	0	0	656	0	10	0	45	248
+ Income from Quota Let	0	0	0	0	0	0	0	0
- Inter-Enterprise Transfers	0	0	40	132	1288	0	0	257
<b>TOTAL GROSS OUTPUT</b>	<b>0</b>	<b>23384</b>	<b>33124</b>	<b>49347</b>	<b>78279</b>	<b>0</b>	<b>30149</b>	<b>42093</b>

**Table - 04D (2011) Direct and Overhead Costs by Size (UAA - Ha) - Sheep System**

Size (UAA-Ha)	2 - < 10	10 - < 20	20 - < 30	30 - < 50	50 - < 100	>= 100	Hill Farms	All Sizes
<b>No. of Farms in Sample</b>	2	14	15	26	29	6	35	127
<b>Per Cent of Population</b>	0.7	2.1	2	3.1	1.7	0.3	4.1	14.4
<b>DIRECT COSTS (€)</b>								
Purchased Concentrates	0	3357	3777	5932	8382	0	2527	4606
Purchased Bulky Feed	0	205	269	501	607	0	577	439
Fertiliser	0	1096	1426	2280	4509	0	987	1965
Crop Protection	0	55	50	278	326	0	70	162
Purchased Seed	0	151	77	139	485	0	24	166
Hire of Machinery	0	1354	1448	2039	3051	0	702	1558
Transport	0	19	32	34	117	0	27	41
Livestock (A.I. Vet etc.)	0	1105	1677	2255	3439	0	1407	1923
Casual Labour	0	16	0	134	10	0	7	62
Other	0	789	1037	1219	1908	0	415	1009
<b>Sub-Total</b>	<b>0</b>	<b>8146</b>	<b>9793</b>	<b>14810</b>	<b>22835</b>	<b>0</b>	<b>6743</b>	<b>11931</b>
Fodder Crop Adjustment	0	38	84	-103	-562	0	-48	-109
<b>TOTAL DIRECT COSTS</b>	<b>0</b>	<b>8184</b>	<b>9877</b>	<b>14695</b>	<b>22270</b>	<b>0</b>	<b>6695</b>	<b>11820</b>
<b>OVERHEAD COSTS (€)</b>								
Rent of Conacre	0	301	672	1065	2738	0	677	1007
Car, Electricity, Phone	0	732	1740	1968	2051	0	1105	1462
Current Hired Labour	0	79	129	143	3346	0	4	562
Interest Charges	0	81	168	531	1002	0	190	381
Machinery Depreciation	0	1600	1675	2551	5268	0	1298	2417
Machinery Operating	0	1642	2484	3387	7146	0	2113	3309
of which Fuel & Lub	0	750	1288	1719	3576	0	1179	1685
Buildings Depreciation	0	544	543	667	1562	0	408	707
Buildings Maintenance	0	248	623	773	1079	0	359	697
Land Improvement Depreciation	0	80	78	105	271	0	74	114
Land Improvement Maintenance	0	235	741	1201	1535	0	565	864
Lime	0	250	147	173	264	0	80	170
Other	0	1346	2196	2136	3409	0	1218	1949
<b>OVERHEAD COSTS</b>	<b>0</b>	<b>6889</b>	<b>11048</b>	<b>14527</b>	<b>29406</b>	<b>0</b>	<b>8013</b>	<b>13469</b>
<b>TOTAL NET EXPENSES</b>	<b>0</b>	<b>15073</b>	<b>20926</b>	<b>29234</b>	<b>51679</b>	<b>0</b>	<b>14708</b>	<b>25292</b>
<b>Distribution - % of farms</b>								
<b>Costs % Output</b>	<b>0</b>	<b>72.7</b>	<b>63.3</b>	<b>60.5</b>	<b>65.4</b>	<b>0</b>	<b>53.9</b>	<b>64.4</b>





**Table - 05B (2011) Resources per Farm by Size (UAA - Ha) - Tillage System**

Size (UAA-Ha)	2 - < 10	10 - < 20	20 - < 30	30 - < 50	50 - < 100	>= 100	All Sizes
<b>No. of Farms in Sample</b>	1	3	7	21	47	23	102
<b>Per Cent of Population</b>	0.4	0.9	1	1.7	1.9	0.9	7.1
<b>LAND (ha)</b>							
Area Owned	0	0	0	36.2	65.3	104.8	48.7
Total Area	0	0	0	40.7	76	209.3	67
Tillage	0	0	0	19.2	43.2	156.8	42.6
of which Total Cereals	0	0	0	17.8	38.2	129.4	37
" Potatoes	0	0	0	0	0	0	1.6
Grassland Silage	0	0	0	3.9	7.2	9.9	5
Hay	0	0	0	1.9	1.9	1.8	1.6
Pasture	0	0	0	12	16.8	31.2	13
Rough Grazing	0	0	0	0.2	1	3.1	0.9
<b>U.A.A</b>	<b>0</b>	<b>0</b>	<b>0</b>	<b>38.5</b>	<b>72.7</b>	<b>206.2</b>	<b>64.8</b>
Remainder of Farm	0	0	0	2.2	3.3	3.1	2.2
Forage & Crop Acreage	0	0	0	37.6	70.4	201.2	63.1
<b>LIVESTOCK</b>							
<b>Cattle</b>							
Dairy Cows	0	0	0	0	0	0	0
Other Cows	0	0	0	4	10.3	17.3	6.2
Heifers-in-Calf	0	0	0	0.4	1.2	1.2	0.6
< 1 Year Old	0	0	0	5.9	14.5	20.5	8.3
1 - 2 Year Old Male	0	0	0	5.7	8.8	23.5	7.8
1 - 2 Year Old Female	0	0	0	1.2	6.9	10.9	3.7
=> 2 Year Old Male	0	0	0	4	4.9	5.8	3.5
=> 2 Year Old Female	0	0	0	0	1.2	2.1	0.6
Bulls	0	0	0	0.2	0.4	0.6	0.2
<b>Total Cattle</b>	<b>0</b>	<b>0</b>	<b>0</b>	<b>21.6</b>	<b>48.1</b>	<b>81.9</b>	<b>31.1</b>
<b>Sheep (avg. no)</b>							
Ewes	0	0	0	28.2	28.3	54.6	25.5
Other Sheep	0	0	0	28	31.7	53.2	25.8
Total Sheep	0	0	0	56.2	60	107.8	51.4
<b>Grazing Livestock Units</b>							
Dairy Cows	0	0	0	0	0	0	0
Other Cattle	0	0	0	14.9	31.9	55.4	21.1
Sheep	0	0	0	8	8.4	15.4	7.3
Horses	0	0	0	0.1	0.2	0.9	0.2
<b>Total Livestock Units</b>	<b>0</b>	<b>0</b>	<b>0</b>	<b>23.1</b>	<b>40.6</b>	<b>71.6</b>	<b>28.6</b>
<b>LABOUR UNITS</b>							
Family	0	0	0	1	1.08	1.41	0.98
Total	0	0	0	1.14	1.26	2.27	1.19



**Table - 05C (2011) Gross Output and Direct Payments by Size (UAA - Ha) - Tillage System**

Size (UAA-Ha)	2 - < 10	10 - < 20	20 - < 30	30 - < 50	50 - < 100	>= 100	All Sizes
<b>No. of Farms in Sample</b>	1	3	7	21	47	23	102
<b>Per Cent of Population</b>	0.4	0.9	1	1.7	1.9	0.9	7.1
<b>(€) GROSS OUTPUT</b>							
<b>LIVESTOCK</b>							
Dairying	0	0	0	0	0	0	0
of which milk	0	0	0	0	0	0	0
Cattle	0	0	0	7717	19919	31913	12352
of which Suckler Welfare Scheme	0	0	0	84	303	756	209
Sheep & Wool	0	0	0	3335	4144	6217	3297
of which Sheep Welfare Scheme	0	0	0	189	146	332	152
Pigs	0	0	0	0	0	0	0
Poultry	0	0	0	0	0	0	0
Horses	0	0	0	-57	11	-300	-53
Other	0	0	0	0	0	0	0
<b>Sub-Total Livestock</b>	<b>0</b>	<b>0</b>	<b>0</b>	<b>10995</b>	<b>24073</b>	<b>37829</b>	<b>15597</b>
of which Disease Compensation	0	0	0	0	0	0	0
<b>CROPS</b>							
Wheat	0	0	0	0	16946	122673	22293
Barley - Feeding	0	0	0	13225	27209	52842	21072
Barley - Malting	0	0	0	0	0	0	3161
Oats	0	0	0	0	4440	28671	6203
Potatoes	0	0	0	0	0	0	9196
Other	0	0	0	3558	11242	46901	10946
of which Forestry Premium	0	0	0	285	717	691	364
<b>Sub-Total Crops</b>	<b>0</b>	<b>0</b>	<b>0</b>	<b>29322</b>	<b>68745</b>	<b>295979</b>	<b>72872</b>
<b>TOTAL LIVESTOCK &amp; CROPS</b>	<b>0</b>	<b>0</b>	<b>0</b>	<b>40317</b>	<b>92818</b>	<b>333808</b>	<b>88469</b>
+ Machinery Hire Revenue	0	0	0	1189	2636	6277	1890
+ Other Current Receipts	0	0	0	175	404	1984	430
+ Decoupled Direct Payments / Subs	0	0	0	18379	31441	69895	25541
of which Single Farm Payment	0	0	0	14475	27371	66186	22483
" REPS	0	0	0	3329	3019	1588	2313
" DAS	0	0	0	576	722	713	458
" Other Subsidies	0	0	0	189	475	1740	438
AEOS	0	0	0	0	279	0	77
+ Income from Land Let	0	0	0	312	768	1070	627
+ Income from Quota Let	0	0	0	0	0	0	0
- Inter-Enterprise Transfers	0	0	0	1590	2422	3576	1564
<b>TOTAL GROSS OUTPUT</b>	<b>0</b>	<b>0</b>	<b>0</b>	<b>59245</b>	<b>126363</b>	<b>409485</b>	<b>115802</b>

**Table - 05D (2011) Direct and Overhead Costs by Size (UAA - Ha) - Tillage System**

Size (UAA-Ha)	2 - < 10	10 - < 20	20 - < 30	30 - < 50	50 - < 100	>= 100	All Sizes
<b>No. of Farms in Sample</b>	1	3	7	21	47	23	102
<b>Per Cent of Population</b>	0.4	0.9	1	1.7	1.9	0.9	7.1
<b>DIRECT COSTS (€)</b>							
Purchased Concentrates	0	0	0	1537	4117	6474	2511
Purchased Bulky Feed	0	0	0	122	171	379	132
Fertiliser	0	0	0	7300	14438	53362	14451
Crop Protection	0	0	0	3359	7599	34274	8221
Purchased Seed	0	0	0	1510	3785	16227	4094
Hire of Machinery	0	0	0	4134	8060	23372	7418
Transport	0	0	0	31	175	2716	432
Livestock (A.I. Vet etc.)	0	0	0	810	1787	2409	1085
Casual Labour	0	0	0	218	67	955	204
Other	0	0	0	785	1459	5657	1522
<b>Sub-Total</b>	<b>0</b>	<b>0</b>	<b>0</b>	<b>19806</b>	<b>41659</b>	<b>145826</b>	<b>40071</b>
Fodder Crop Adjustment	0	0	0	259	-283	-121	-82
<b>TOTAL DIRECT COSTS</b>	<b>0</b>	<b>0</b>	<b>0</b>	<b>20068</b>	<b>41366</b>	<b>145705</b>	<b>39987</b>
<b>OVERHEAD COSTS (€)</b>							
Rent of Conacre	0	0	0	1879	3978	43198	7605
Car, Electricity, Phone	0	0	0	1813	1998	3724	1832
Current Hired Labour	0	0	0	2024	3372	17564	3861
Interest Charges	0	0	0	838	1213	5942	1562
Machinery Depreciation	0	0	0	4623	8178	27239	7957
Machinery Operating	0	0	0	6738	12345	35060	10698
of which Fuel & Lub	0	0	0	3494	6596	20244	5849
Buildings Depreciation	0	0	0	459	1535	3726	1097
Buildings Maintenance	0	0	0	473	1248	3735	1030
Land Improvement Depreciation	0	0	0	113	378	444	216
Land Improvement Maintenance	0	0	0	708	1426	2394	1023
Lime	0	0	0	309	341	1273	354
Other	0	0	0	3073	3930	9432	3638
<b>OVERHEAD COSTS</b>	<b>0</b>	<b>0</b>	<b>0</b>	<b>22741</b>	<b>39603</b>	<b>152458</b>	<b>40519</b>
<b>TOTAL NET EXPENSES</b>	<b>0</b>	<b>0</b>	<b>0</b>	<b>42807</b>	<b>80978</b>	<b>298162</b>	<b>80508</b>
<b>Distribution - % of farms</b>							
<b>Costs % Output</b>	<b>0</b>	<b>0</b>	<b>0</b>	<b>71.2</b>	<b>64</b>	<b>71.4</b>	<b>67.2</b>

**Table - 05E (2011) Demographic Data by Size (UAA - Ha) - Tillage System**

Size (UAA-Ha)	2 - < 10	10 - < 20	20 - < 30	30 - < 50	50 - < 100	>= 100	All Sizes
<b>No. of Farms in Sample</b>	1	3	7	21	47	23	102
<b>Per Cent of Population</b>	0.4	0.9	1	1.7	1.9	0.9	7.1
<b>Holder</b>							
Age of Holder	0	0	0	60.5	92.1	47.8	64.1
Marital Status - Married %	0	0	0	66.7	70.2	95.7	69.8
Widowed %	0	0	0	0	0	0	4.7
Single %	0	0	0	0	0	0	23.7
Separated %	0	0	0	0	0	0	1.2
= Total	100	100	100	100	100	100	100
<b>Household</b>							
Household Size (no.)	0	0	0	2.52	2.96	4.17	2.95
< 24 (no.)	0	0	0	0	0.98	1.7	0.82
< 24 % HH	0	0	0	0	44.7	69.6	38.2
25 - 44 (no.)	0	0	0	0	0.55	1.13	0.65
25 - 44 % HH	0	0	0	0	40.4	60.9	43.6
Demograph. Viable % HH	0	0	0	66.7	76.6	87	75.2
<b>Off-farm sources of income --</b>							
Off-farm Job % HH	0	0	0	47.6	55.3	43.5	54.4
Off-farm Job Holder % HH	0	0	0	0	23.4	0	38.1
Off-farm Job Spouse % HH	0	0	0	0	42.6	43.5	27.6
Pensioners (no.)	0	0	0	0	0	0	0.28
Pensioners % HH	0	0	0	0	0	0	22.7
Unemployment Etc. (no.)	0	0	0	0	0	0	0.11
Unemployment Etc. % HH	0	0	0	0	0	0	11.4
F.F.I. (€) < 5000	0	0	0	0	0	0	7
FFI 5000 - 10000	0	0	0	0	0	0	24
FFI 10000 - 20000	0	0	0	52	0	0	23
FFI 20000 - 30000	0	0	0	0	0	0	9
FFI 30000 - 50000	0	0	0	0	34	0	15
FFI 50000 - 70000	0	0	0	0	28	0	9
FFI70TO100000	0	0	0	0	0	0	5
>100000	0	0	0	0	0	48	7



**Table - 06B (2011) Resources per Farm by Size (UAA - Ha) - Mixed Livestock System**

Size (UAA-Ha)	2 - < 10	10 - < 20	20 - < 30	30 - < 50	50 - < 100	>= 100	Hill Farms	All Sizes
<b>No. of Farms in Sample</b>	2	1	3	20	37	19	6	88
<b>Per Cent of Population</b>	0.3	0.4	0.8	1.4	1.4	0.4	0.6	5.6
<b>LAND (ha)</b>								
Area Owned	0	0	0	34.3	58.5	92.4	33.1	39.3
Total Area	0	0	0	44	72.8	138.2	33.5	50
Tillage	0	0	0	1.8	2.6	19	0	2.5
of which Total Cereals	0	0	0	0	0	14.1	0	1.9
" Potatoes	0	0	0	0	0	0	0	0
Grassland Silage	0	0	0	11.6	21	32.9	3.2	12.5
Hay	0	0	0	1.3	0.9	2	0.2	0.8
Pasture	0	0	0	26.1	41.5	78.9	11.2	27.9
Rough Grazing	0	0	0	0.5	2.7	1.7	13.3	2.8
<b>U.A.A</b>	<b>0</b>	<b>0</b>	<b>0</b>	<b>41.9</b>	<b>70.4</b>	<b>134.5</b>	<b>31.4</b>	<b>47.6</b>
Remainder of Farm	0	0	0	2.1	2.4	3.7	2.2	2.4
Forage & Crop Acreage	0	0	0	40.8	66.9	133.3	22.9	45.1
<b>LIVESTOCK</b>								
<b>Cattle</b>								
Dairy Cows	0	0	0	23.6	47.8	89.5	2.8	27.1
Other Cows	0	0	0	6.2	8.5	14.2	1.7	5.6
Heifers-in-Calf	0	0	0	2.6	7.4	16.3	0.8	4.1
< 1 Year Old	0	0	0	28.6	55	112.7	3.1	32.8
1 - 2 Year Old Male	0	0	0	9.2	21.1	41	0.6	11.3
1 - 2 Year Old Female	0	0	0	11	15.2	27.8	1.4	9.7
=> 2 Year Old Male	0	0	0	1.1	5.6	8.8	0.1	2.4
=> 2 Year Old Female	0	0	0	2.6	2.4	4.5	0.7	1.8
Bulls	0	0	0	0.5	1.2	1.8	0.1	0.6
<b>Total Cattle</b>	<b>0</b>	<b>0</b>	<b>0</b>	<b>85.2</b>	<b>163.3</b>	<b>315.4</b>	<b>11.3</b>	<b>94.9</b>
<b>Sheep (avg. no)</b>								
Ewes	0	0	0	23.3	12.2	70.7	27.4	21.3
Other Sheep	0	0	0	23.3	9.5	65.9	29.8	21.5
Total Sheep	0	0	0	46.6	21.6	136.6	57.2	42.8
<b>Grazing Livestock Units</b>								
Dairy Cows	0	0	0	23.6	47.8	89.5	2.8	27.1
Other Cattle	0	0	0	34.1	62.8	119.9	5.3	36.7
Sheep	0	0	0	6.1	3.1	17.8	6.6	5.4
Horses	0	0	0	2.2	0.4	1.3	7.4	2.7
<b>Total Livestock Units</b>	<b>0</b>	<b>0</b>	<b>0</b>	<b>66</b>	<b>114</b>	<b>228.6</b>	<b>22.2</b>	<b>71.9</b>
<b>LABOUR UNITS</b>								
Family	0	0	0	1.47	1.35	1.66	1.14	1.33
Total	0	0	0	1.53	1.59	2.51	1.17	1.47

Table - 06C (2011) Gross Output and Direct Payments by Size (UAA - Ha) - Mixed Livestock System

Size (UAA-Ha)	2 - < 10	10 - < 20	20 - < 30	30 - < 50	50 - < 100	>= 100	Hill Farms	All Sizes
<b>No. of Farms in Sample</b>	2	1	3	20	37	19	6	88
<b>Per Cent of Population</b>	0.3	0.4	0.8	1.4	1.4	0.4	0.6	5.6
<b>(€) GROSS OUTPUT</b>								
<b>LIVESTOCK</b>								
Dairying	0	0	0	44280	86180	161357	4289	48850
of which milk	0	0	0	41213	83170	155673	3804	46434
Cattle	0	0	0	23221	46437	87213	2702	26158
of which Suckler Welfare Scheme	0	0	0	77	221	320	66	120
Sheep & Wool	0	0	0	3481	1891	9934	2085	2681
of which Sheep Welfare Scheme	0	0	0	155	129	360	172	170
Pigs	0	0	0	0	5445	26142	0	3297
Poultry	0	0	0	0	0	0	0	0
Horses	0	0	0	784	22	996	-2106	28
Other	0	0	0	0	0	0	0	0
<b>Sub-Total Livestock</b>	<b>0</b>	<b>0</b>	<b>0</b>	<b>71766</b>	<b>139975</b>	<b>285643</b>	<b>6971</b>	<b>81014</b>
of which Disease Compensation	0	0	0	2442	355	331	0	719
<b>CROPS</b>								
Wheat	0	0	0	0	0	0	0	519
Barley - Feeding	0	0	0	0	0	9027	0	1131
Barley - Malting	0	0	0	0	0	0	0	920
Oats	0	0	0	0	0	0	0	15
Potatoes	0	0	0	0	0	0	0	0
Other	0	0	0	1792	1262	676	1972	1286
of which Forestry Premium	0	0	0	241	401	62	719	253
<b>Sub-Total Crops</b>	<b>0</b>	<b>0</b>	<b>0</b>	<b>3223</b>	<b>4341</b>	<b>20430</b>	<b>1972</b>	<b>3871</b>
<b>TOTAL LIVESTOCK &amp; CROPS</b>	<b>0</b>	<b>0</b>	<b>0</b>	<b>74989</b>	<b>144316</b>	<b>306073</b>	<b>8942</b>	<b>84885</b>
+ Machinery Hire Revenue	0	0	0	273	655	706	0	297
+ Other Current Receipts	0	0	0	301	281	322	0	185
+ Decoupled Direct Payments / Subs	0	0	0	19141	29915	58025	9830	19729
of which Single Farm Payment	0	0	0	13394	21972	51973	5975	14693
" REPS	0	0	0	3336	5434	4244	406	2626
" DAS	0	0	0	2134	2400	1788	3395	2276
" Other Subsidies	0	0	0	551	505	805	367	449
AEOS	0	0	0	0	0	0	53	37
+ Income from Land Let	0	0	0	0	306	0	0	77
+ Income from Quota Let	0	0	0	110	168	0	0	70
- Inter-Enterprise Transfers	0	0	0	1204	2496	9094	112	1748
<b>TOTAL GROSS OUTPUT</b>	<b>0</b>	<b>0</b>	<b>0</b>	<b>93630</b>	<b>173249</b>	<b>356251</b>	<b>18610</b>	<b>103507</b>

**Table - 06D (2011) Direct and Overhead Costs by Size (UAA - Ha) - Mixed Livestock System**

Size (UAA-Ha)	2 - < 10	10 - < 20	20 - < 30	30 - < 50	50 - < 100	>= 100	Hill Farms	All Sizes
<b>No. of Farms in Sample</b>	2	1	3	20	37	19	6	88
<b>Per Cent of Population</b>	0.3	0.4	0.8	1.4	1.4	0.4	0.6	5.6
<b>DIRECT COSTS (€)</b>								
Purchased Concentrates	0	0	0	13838	25998	57246	1768	15577
Purchased Bulky Feed	0	0	0	1219	1329	2013	84	962
Fertiliser	0	0	0	5837	10807	23993	1352	6712
Crop Protection	0	0	0	400	825	4113	146	658
Purchased Seed	0	0	0	257	513	2722	86	415
Hire of Machinery	0	0	0	3306	7695	15515	941	4527
Transport	0	0	0	426	434	450	39	300
Livestock (A.I. Vet etc.)	0	0	0	4195	7355	15485	2127	4766
Casual Labour	0	0	0	650	212	5017	0	584
Other	0	0	0	2838	6083	12449	959	3681
<b>Sub-Total</b>	<b>0</b>	<b>0</b>	<b>0</b>	<b>32964</b>	<b>61251</b>	<b>139001</b>	<b>7503</b>	<b>38182</b>
Fodder Crop Adjustment	0	0	0	-34	-1159	-2361	-103	-558
<b>TOTAL DIRECT COSTS</b>	<b>0</b>	<b>0</b>	<b>0</b>	<b>32931</b>	<b>60088</b>	<b>136641</b>	<b>7400</b>	<b>37623</b>
<b>OVERHEAD COSTS (€)</b>								
Rent of Conacre	0	0	0	2972	5429	14986	134	3475
Car, Electricity, Phone	0	0	0	3055	3723	6027	2075	3019
Current Hired Labour	0	0	0	321	4356	12982	349	2176
Interest Charges	0	0	0	830	2706	4990	460	1315
Machinery Depreciation	0	0	0	3864	7424	15579	1117	4969
Machinery Operating	0	0	0	6204	10840	26407	2694	7390
of which Fuel & Lub	0	0	0	2890	5195	14026	1232	3600
Buildings Depreciation	0	0	0	2290	3386	7509	877	2194
Buildings Maintenance	0	0	0	1247	2296	6264	314	1462
Land Improvement Depreciation	0	0	0	171	445	825	117	229
Land Improvement Maintenance	0	0	0	1381	1822	3356	1213	1482
Lime	0	0	0	580	545	655	19	332
Other	0	0	0	3272	4932	7646	2266	3270
<b>OVERHEAD COSTS</b>	<b>0</b>	<b>0</b>	<b>0</b>	<b>25607</b>	<b>47359</b>	<b>106573</b>	<b>11615</b>	<b>30982</b>
<b>TOTAL NET EXPENSES</b>	<b>0</b>	<b>0</b>	<b>0</b>	<b>58538</b>	<b>107451</b>	<b>243214</b>	<b>19015</b>	<b>68605</b>
<b>Distribution - % of farms</b>								
<b>Costs % Output</b>	<b>0</b>	<b>0</b>	<b>0</b>	<b>63</b>	<b>61.1</b>	<b>65.6</b>	<b>174.3</b>	<b>88.9</b>

**Table - 06E (2011) Demographic Data by Size (UAA - Ha) - Mixed Livestock System**

Size (UAA-Ha)	2 - < 10	10 - < 20	20 - < 30	30 - < 50	50 - < 100	>= 100	Hill Farms	All Sizes
<b>No. of Farms in Sample</b>	2	1	3	20	37	19	6	88
<b>Per Cent of Population</b>	0.3	0.4	0.8	1.4	1.4	0.4	0.6	5.6
<b>Holder</b>								
Age of Holder	0	0	0	54.1	54.3	48.3	47.4	54.8
Marital Status - Married %	0	0	0	85	75.7	73.7	96.8	77.8
Widowed %	0	0	0	0	0	0	0	1.2
Single %	0	0	0	0	0	0	3.2	21
Separated %	0	0	0	0	0	0	0	0
= Total	100	100	100	100	100	100	100	100
<b>Household</b>								
Household Size (no.)	0	0	0	3.45	3.35	3.84	3.75	3.15
< 24 (no.)	0	0	0	0	1.24	1.58	1.72	0.97
< 24 % HH	0	0	0	0	48.6	57.9	91.2	42.2
25 - 44 (no.)	0	0	0	0	0.43	0	0.06	0.42
25 - 44 % HH	0	0	0	0	32.4	0	5.6	35
Demograph. Viable % HH	0	0	0	70	73	84.2	94.4	75.4
<b>Off-farm sources of income --</b>								
Off-farm Job % HH	0	0	0	60	35.1	0	86.6	39.7
Off-farm Job Holder % HH	0	0	0	0	0	0	75.4	14.9
Off-farm Job Spouse % HH	0	0	0	50	27	0	86.6	34
Pensioners (no.)	0	0	0	0	0	0	0	0.36
Pensioners % HH	0	0	0	0	0	0	0	28.3
Unemployment Etc. (no.)	0	0	0	0	0	0	0.1	0.05
Unemployment Etc. % HH	0	0	0	0	0	0	10.2	5
F.F.I. (€) < 5000	0	0	0	0	0	0	70	24
FFI 5000 - 10000	0	0	0	0	0	0	16	12
FFI 10000 - 20000	0	0	0	0	0	0	6	15
FFI 20000 - 30000	0	0	0	0	0	0	3	7
FFI 30000 - 50000	0	0	0	0	0	0	6	14
FFI 50000 - 70000	0	0	0	0	30	0	0	11
FFI70TO100000	0	0	0	0	0	0	0	8
>100000	0	0	0	0	0	63	0	10





**Table - 07B (2011) Resources per Farm by Size (UAA - Ha) - All Systems**

Size (UAA-Ha)	2 - < 10	10 - < 20	20 - < 30	30 - < 50	50 - < 100	>= 100	Hill Farms	All Sizes
<b>No. of Farms in Sample</b>	14	79	128	282	316	104	99	1022
<b>Per Cent of Population</b>	5.3	17.9	18.9	24.8	17.7	3.8	11.2	99.8
<b>LAND (ha)</b>								
Area Owned	9.2	15.6	24.7	34.9	58.4	108.2	36.9	35.4
Total Area	9.3	16.7	26.4	40.7	71.1	156.2	42.2	42
Tillage	0.1	0.9	1	2	7	48.2	0	4
of which Total Cereals	0	0	0.9	1.8	5.6	38.4	0	3.2
" Potatoes	0	0	0	0	0	0	0	0.1
Grassland Silage	2.4	4.3	6.6	9.9	16.9	24.4	4.9	9.1
Hay	0.2	0.4	0.7	0.9	1.5	2.1	0.2	0.8
Pasture	5.5	9.3	15.3	23.4	37.5	63.5	19.4	22
Rough Grazing	0.2	0.3	1	1.5	3.6	6.7	13.6	3.1
<b>U.A.A</b>	<b>8.3</b>	<b>16</b>	<b>25.2</b>	<b>38.9</b>	<b>68.3</b>	<b>151.3</b>	<b>40.3</b>	<b>40.3</b>
Remainder of Farm	0.9	0.7	1.3	1.8	2.8	4.9	1.9	1.8
Forage & Crop Acreage	8.2	16	24.2	38.3	65.1	142.7	35.2	38.5
<b>LIVESTOCK</b>								
<b>Cattle</b>								
Dairy Cows	0.5	0.9	3.3	11.3	31.5	45	3.1	11.3
Other Cows	3.4	5.8	10.1	10.7	15.1	25.4	8.7	10.4
Heifers-in-Calf	0.4	0.5	1	2	6	9.6	1	2.3
< 1 Year Old	6	7.9	13.9	18.7	38.2	59.1	10.6	19.3
1 - 2 Year Old Male	4.8	3.8	5	7.2	13.4	27	3.6	7.5
1 - 2 Year Old Female	0.8	3.1	4.2	6.5	12.3	21.8	3.4	6.4
=> 2 Year Old Male	1	1.7	1.3	3	4.9	6.3	1.1	2.6
=> 2 Year Old Female	0.3	0.6	0.9	1.8	2.1	2.9	1	1.4
Bulls	0	0.2	0.4	0.5	1	1.4	0.3	0.5
<b>Total Cattle</b>	<b>17.1</b>	<b>24.5</b>	<b>40.1</b>	<b>61.6</b>	<b>124</b>	<b>198</b>	<b>32.7</b>	<b>61.6</b>
<b>Sheep (avg. no)</b>								
Ewes	9.8	9.5	11.9	23.9	30.1	82.3	46.9	24.2
Other Sheep	7	7.2	12.3	25	31.6	72.7	40.9	23.2
Total Sheep	16.8	16.7	24.2	48.9	61.7	155	87.8	47.5
<b>Grazing Livestock Units</b>								
Dairy Cows	0.5	0.9	3.3	11.3	31.5	45	3.1	11.3
Other Cattle	10.4	15.4	23.1	31.4	54.7	91.5	18.8	30.9
Sheep	2.2	2.2	3.2	6.4	8.2	19.9	9.9	6
Horses	0.3	0.3	0.2	0.3	0.3	0.9	0.9	0.4
<b>Total Livestock Units</b>	<b>13.4</b>	<b>18.8</b>	<b>29.7</b>	<b>49.4</b>	<b>94.6</b>	<b>157.3</b>	<b>32.6</b>	<b>48.6</b>
<b>LABOUR UNITS</b>								
Family	0.84	0.85	0.93	1.11	1.29	1.53	1.01	1.05
Total	0.84	0.86	0.94	1.16	1.48	2.17	1.02	1.13

**Table - 07C (2011) Gross Output and Direct Payments by Size (UAA - Ha) - All Systems**

Size (UAA-Ha)	2 - < 10	10 - < 20	20 - < 30	30 - < 50	50 - < 100	>= 100	Hill Farms	All Sizes
<b>No. of Farms in Sample</b>	14	79	128	282	316	104	99	1022
<b>Per Cent of Population</b>	5.3	17.9	18.9	24.8	17.7	3.8	11.2	99.8
<b>(€) GROSS OUTPUT</b>								
<b>LIVESTOCK</b>								
Dairying	1021	1744	5197	21497	59530	86764	4861	21178
of which milk	943	1671	4950	20693	57871	86083	4407	20542
Cattle	6094	8400	12621	20019	35580	64014	11143	19254
of which Suckler Welfare Scheme	39	164	230	334	480	743	251	301
Sheep & Wool	1352	1150	1755	3476	4376	10857	3682	3087
of which Sheep Welfare Scheme	110	73	80	193	214	408	334	174
Pigs	0	0	0	0	450	2823	0	189
Poultry	0	0	0	0	2	0	0	0
Horses	12	-53	11	43	109	-555	-101	-9
Other	0	0	0	0	0	0	0	0
<b>Sub-Total Livestock</b>	<b>8479</b>	<b>11241</b>	<b>19584</b>	<b>45035</b>	<b>100047</b>	<b>163904</b>	<b>19586</b>	<b>43698</b>
of which Disease Compensation	0	0	10	219	162	409	48	106
<b>CROPS</b>								
Wheat	0	0	0	0	2137	32801	0	1701
Barley - Feeding	0	0	0	1410	4200	17606	10	2008
Barley - Malting	0	0	0	0	0	0	0	296
Oats	0	0	0	0	551	7700	0	483
Potatoes	0	0	0	0	0	0	6	681
Other	-101	416	398	962	2274	14574	635	1422
of which Forestry Premium	0	0	122	298	522	1713	439	306
<b>Sub-Total Crops</b>	<b>601</b>	<b>1219</b>	<b>1507</b>	<b>3393</b>	<b>10502</b>	<b>84777</b>	<b>650</b>	<b>6591</b>
<b>TOTAL LIVESTOCK &amp; CROPS</b>	<b>9080</b>	<b>12460</b>	<b>21091</b>	<b>48428</b>	<b>110549</b>	<b>248682</b>	<b>20236</b>	<b>50289</b>
+ Machinery Hire Revenue	0	4	458	366	592	2874	329	432
+ Other Current Receipts	0	36	42	233	365	1219	127	198
+ Decoupled Direct Payments / Subs	4095	7310	10501	18857	28483	55985	13629	16969
of which Single Farm Payment	2948	5004	7302	13376	23000	50185	7697	12658
" REPS	269	1068	1243	3139	3146	3367	2807	2227
" DAS	845	1199	1671	2173	1955	1820	2826	1853
" Other Subsidies	142	112	381	454	793	1253	674	478
AEOS	32	37	264	78	134	3	148	118
+ Income from Land Let	365	76	414	213	253	460	149	244
+ Income from Quota Let	0	0	0	7	33	22	21	11
- Inter-Enterprise Transfers	36	80	140	650	1902	5038	113	750
<b>TOTAL GROSS OUTPUT</b>	<b>13472</b>	<b>19775</b>	<b>32216</b>	<b>67454</b>	<b>138490</b>	<b>304494</b>	<b>34252</b>	<b>67375</b>

**Table - 07D (2011) Direct and Overhead Costs by Size (UAA - Ha) - All Systems**

Size (UAA-Ha)	2 - < 10	10 - < 20	20 - < 30	30 - < 50	50 - < 100	>= 100	Hill Farms	All Sizes
<b>No. of Farms in Sample</b>	14	79	128	282	316	104	99	1022
<b>Per Cent of Population</b>	5.3	17.9	18.9	24.8	17.7	3.8	11.2	99.8
<b>DIRECT COSTS (€)</b>								
Purchased Concentrates	1291	2041	3323	7094	14991	29615	3095	6985
Purchased Bulky Feed	409	176	328	558	1379	2328	442	639
Fertiliser	1148	1376	2219	4343	9607	27209	1984	4790
Crop Protection	56	151	182	484	1386	10418	103	845
Purchased Seed	36	134	160	321	960	5587	89	532
Hire of Machinery	947	1529	2203	3632	6530	14462	1654	3551
Transport	37	46	90	207	276	1513	76	195
Livestock (A.I. Vet etc.)	618	839	1532	2907	5928	10484	1561	2831
Casual Labour	0	9	29	269	320	1032	30	174
Other	650	612	984	1933	4528	8173	725	2014
<b>Sub-Total</b>	<b>5192</b>	<b>6912</b>	<b>11050</b>	<b>21748</b>	<b>45906</b>	<b>110820</b>	<b>9760</b>	<b>22557</b>
Fodder Crop Adjustment	-216	-66	-245	-206	-764	-1122	-230	-326
<b>TOTAL DIRECT COSTS</b>	<b>4976</b>	<b>6845</b>	<b>10805</b>	<b>21525</b>	<b>45136</b>	<b>109701</b>	<b>9532</b>	<b>22225</b>
<b>OVERHEAD COSTS (€)</b>								
Rent of Conacre	62	247	597	1649	3797	17324	700	1993
Car, Electricity, Phone	806	1209	1605	2301	3140	4549	1537	2043
Current Hired Labour	0	58	80	464	3613	13426	158	1319
Interest Charges	37	215	284	874	2183	5954	306	964
Machinery Depreciation	921	1347	1944	3204	6729	16002	1537	3443
Machinery Operating	1789	1675	2477	4923	9444	23963	2710	4998
of which Fuel & Lub	808	792	1158	2355	4633	12975	1265	2457
Buildings Depreciation	349	452	723	1411	2820	4681	747	1354
Buildings Maintenance	259	343	482	917	1732	3651	388	887
Land Improvement Depreciation	9	67	114	183	364	677	83	180
Land Improvement Maintenance	554	369	722	1076	1643	2735	611	966
Lime	34	69	63	301	426	870	123	224
Other	640	1235	1642	2887	4361	7888	1567	2541
<b>OVERHEAD COSTS</b>	<b>5426</b>	<b>7215</b>	<b>10669</b>	<b>19888</b>	<b>39825</b>	<b>100851</b>	<b>10346</b>	<b>20689</b>
<b>TOTAL NET EXPENSES</b>	<b>10402</b>	<b>14061</b>	<b>21474</b>	<b>41430</b>	<b>84967</b>	<b>210550</b>	<b>19877</b>	<b>42919</b>
<b>Distribution - % of farms</b>								
<b>Costs % Output</b>	<b>82.6</b>	<b>75.4</b>	<b>68.5</b>	<b>64.5</b>	<b>62.8</b>	<b>65.9</b>	<b>64.6</b>	<b>67.9</b>

**Table - 07E (2011) Demographic Data by Size (UAA - Ha) - All Systems**

Size (UAA-Ha)	2 - < 10	10 - < 20	20 - < 30	30 - < 50	50 - < 100	>= 100	Hill Farms	All Sizes
<b>No. of Farms in Sample</b>	14	79	128	282	316	104	99	1022
<b>Per Cent of Population</b>	5.3	17.9	18.9	24.8	17.7	3.8	11.2	99.8
<b>Holder</b>								
Age of Holder	63.2	56.2	54.7	54.7	56	49.9	55.8	55.6
Marital Status - Married %	71.3	69.9	65.1	76.2	76.7	79.5	57.2	70.8
Widowed %	0	0	0	0	3.6	0	8.2	3.8
Single %	0	25.8	28.2	18.5	17.9	15.7	33.8	23.7
Separated %	0	0	0	0	0	0	0.9	1
= Total	100	100	100	100	100	100	100	100
<b>Household</b>								
Household Size (no.)	2.63	2.81	2.75	2.97	3.47	3.77	2.78	2.98
< 24 (no.)	0	0.69	0.76	0.89	1.33	1.43	0.8	0.9
< 24 % HH	0	32.1	41	43	55.2	60.2	36.2	42.1
25 - 44 (no.)	0	0.52	0.4	0.51	0.58	0.75	0.46	0.48
25 - 44 % HH	0	39.2	28.1	36.1	38.6	45.3	29.8	33.7
Demograph. Viable % HH	0	61.9	68	67.1	82.8	83.9	65.1	68.1
<b>Off-farm sources of income --</b>								
Off-farm Job % HH	0	43	51.6	55.6	47.9	41.1	51.4	49.5
Off-farm Job Holder % HH	0	39.2	41.3	32.2	15.1	10.7	37.9	31.8
Off-farm Job Spouse % HH	0	21.7	32.1	36.6	39.3	35.6	29.7	32
Pensioners (no.)	0	0.47	0.35	0.29	0.19	0.17	0.27	0.32
Pensioners % HH	0	36.2	26.5	21.7	14.8	13.5	21.7	24.5
Unemployment Etc. (no.)	0	0.21	0.17	0.07	0	0	0.12	0.12
Unemployment Etc. % HH	0	20.4	15.8	6.6	0	0	11.6	11.8
<b>Distribution - % of farms</b>								
System (1) Dairying	0	0	8.4	19.4	33.1	25.7	6.4	14.8
(2) Cattle Rearing	0	31.6	36.8	25.9	12.5	0	25.5	25.5
(4)Cattle Other	0	44.5	34.2	29.4	25.1	21.4	25	32.5
(5)Sheep	0	12.2	10.6	12.6	10.1	0	36.9	14.4
(6)Tillage	0	0	0	7.1	11.2	25.8	0	7.2
(7)Mixed Livestock	0	0	0	5.6	8	10.8	6.1	5.7
F.F.I. (€) < 5000	0	49	23	10	5	0	16	23
FFI 5000 - 10000	0	37	26	14	5	0	36	21
FFI 10000 - 20000	0	10	40	27	11	0	26	21
FFI 20000 - 30000	0	0	7	17	14	0	5	9
FFI 30000 - 50000	0	0	0	18	20	17	14	11
FFI 50000 - 70000	0	0	0	7	16	11	2	5
FFI70TO100000	0	0	0	5	14	21	1	5
>100000	0	0	0	0	15	38	0	5



**Table - 08B (2011) Resources per Farm by System of Farming - All Farms**

System	Dairying	Cattle Rearing	Cattle Other	Sheep	Tillage	Mixed Livestock	All Sizes
<b>No. of Farms in Sample</b>	255	193	257	127	102	88	1022
<b>Per Cent of Population</b>	14.7	25.4	32.4	14.4	7.1	5.6	99.8
<b>LAND (ha)</b>							
Area Owned	45.4	29	31.1	38	48.7	39.3	35.4
Total Area	57.3	32.5	35.2	43.1	67	50	42
Tillage	2.2	0.1	0.9	0.7	42.6	2.5	4
of which Total Cereals	1.1	0	0.7	0.5	37	1.9	3.2
" Potatoes	0	0	0	0	1.6	0	0.1
Grassland Silage	19.1	7.4	8	5.2	5	12.5	9.1
Hay	0.4	0.8	0.9	0.8	1.6	0.8	0.8
Pasture	30.8	18.7	20.9	23.6	13	27.9	22
Rough Grazing	1.6	2.9	1.7	9.3	0.9	2.8	3.1
<b>U.A.A</b>	<b>54.8</b>	<b>31.1</b>	<b>33.7</b>	<b>41.3</b>	<b>64.8</b>	<b>47.6</b>	<b>40.3</b>
Remainder of Farm	2.5	1.4	1.5	1.9	2.2	2.4	1.8
Forage & Crop Acreage	53.5	28.5	32.1	40.1	63.1	45.1	38.5
<b>LIVESTOCK</b>							
<b>Cattle</b>							
Dairy Cows	66.2	0	0	0	0	27.1	11.3
Other Cows	1.4	20.5	9.4	8.2	6.2	5.6	10.4
Heifers-in-Calf	9.2	1.2	1	0.6	0.6	4.1	2.3
< 1 Year Old	38.9	17	17.3	7.9	8.3	32.8	19.3
1 - 2 Year Old Male	5.5	1.8	13.9	3.5	7.8	11.3	7.5
1 - 2 Year Old Female	12.8	3.5	7.4	2.8	3.7	9.7	6.4
=> 2 Year Old Male	0.5	0.2	5.8	1.2	3.5	2.4	2.6
=> 2 Year Old Female	1.8	0.8	2	0.6	0.6	1.8	1.4
Bulls	0.9	0.6	0.3	0.3	0.2	0.6	0.5
<b>Total Cattle</b>	<b>136.5</b>	<b>45.6</b>	<b>57.3</b>	<b>25.1</b>	<b>31.1</b>	<b>94.9</b>	<b>61.6</b>
<b>Sheep (avg. no)</b>							
Ewes	1.6	2.2	8.9	121.3	25.5	21.3	24.2
Other Sheep	2	2.7	9.2	112.3	25.8	21.5	23.2
Total Sheep	3.6	4.9	18.1	233.6	51.4	42.8	47.5
<b>Grazing Livestock Units</b>							
Dairy Cows	66.2	0	0	0	0	27.1	11.3
Other Cattle	34.3	29.4	37.9	16.7	21.1	36.7	30.9
Sheep	0.4	0.7	2.4	28.9	7.3	5.4	6
Horses	0.1	0.2	0.2	0.3	0.2	2.7	0.4
<b>Total Livestock Units</b>	<b>101.1</b>	<b>30.2</b>	<b>40.6</b>	<b>45.9</b>	<b>28.6</b>	<b>71.9</b>	<b>48.6</b>
<b>LABOUR UNITS</b>							
Family	1.38	0.94	0.96	1.05	0.98	1.33	1.05
Total	1.6	0.95	0.99	1.08	1.19	1.47	1.13

**Table - 08C (2011) Gross Output and Direct Payments by System of Farming - All Farms**

System	Dairying	Cattle Rearing	Cattle Other	Sheep	Tillage	Mixed Livestock	All Sizes
<b>No. of Farms in Sample</b>	255	193	257	127	102	88	1022
<b>Per Cent of Population</b>	14.7	25.4	32.4	14.4	7.1	5.6	99.8
<b>(€) GROSS OUTPUT</b>							
<b>LIVESTOCK</b>							
Dairying	124674	0	0	4	0	48850	21178
of which milk	121295	0	0	0	0	46434	20542
Cattle	26677	16796	22208	10080	12352	26158	19254
of which Suckler Welfare Scheme	2	595	288	231	209	120	301
Sheep & Wool	260	345	1336	14809	3297	2681	3087
of which Sheep Welfare Scheme	17	21	83	819	152	170	174
Pigs	0	0	0	17	0	3297	189
Poultry	0	0	0	2	0	0	0
Horses	-86	3	32	-40	-53	28	-9
Other	0	0	0	0	0	0	0
<b>Sub-Total Livestock</b>	<b>151525</b>	<b>17144</b>	<b>23577</b>	<b>24872</b>	<b>15597</b>	<b>81014</b>	<b>43698</b>
of which Disease Compensation	203	75	19	73	0	719	106
<b>CROPS</b>							
Wheat	265	0	0	0	22293	0	1701
Barley - Feeding	835	0	717	406	21072	1131	2008
Barley - Malting	0	0	0	0	3161	0	296
Oats	0	0	0	0	6203	0	483
Potatoes	0	0	0	0	9196	0	681
Other	462	612	806	529	10946	1286	1422
of which Forestry Premium	210	354	287	351	364	253	306
<b>Sub-Total Crops</b>	<b>1850</b>	<b>671</b>	<b>1656</b>	<b>1043</b>	<b>72872</b>	<b>3871</b>	<b>6591</b>
<b>TOTAL LIVESTOCK &amp; CROPS</b>	<b>153375</b>	<b>17816</b>	<b>25232</b>	<b>25916</b>	<b>88469</b>	<b>84885</b>	<b>50289</b>
+ Machinery Hire Revenue	219	423	382	102	1890	297	432
+ Other Current Receipts	345	149	123	194	430	185	198
+ Decoupled Direct Payments / Subs	22489	12362	16118	16012	25541	19729	16969
of which Single Farm Payment	17630	8079	12435	10459	22483	14693	12658
" REPS	2953	2019	1715	2807	2313	2626	2227
" DAS	1745	2021	1733	2466	458	2276	1853
" Other Subsidies	618	263	318	1103	438	449	478
AEOS	6	181	127	155	77	37	118
+ Income from Land Let	157	137	310	248	627	77	244
+ Income from Quota Let	34	0	6	0	0	70	11
- Inter-Enterprise Transfers	2582	14	359	257	1564	1748	750
<b>TOTAL GROSS OUTPUT</b>	<b>174071</b>	<b>30745</b>	<b>41805</b>	<b>42093</b>	<b>115802</b>	<b>103507</b>	<b>67375</b>



**Table - 08D (2011) Direct and Overhead Costs by System of Farming - All Farms**

System	Dairying	Cattle Rearing	Cattle Other	Sheep	Tillage	Mixed Livestock	All Sizes
<b>No. of Farms in Sample</b>	255	193	257	127	102	88	1022
<b>Per Cent of Population</b>	14.7	25.4	32.4	14.4	7.1	5.6	99.8
<b>DIRECT COSTS (€)</b>							
Purchased Concentrates	21632	2193	4635	4606	2511	15577	6985
Purchased Bulky Feed	1840	312	494	439	132	962	639
Fertiliser	11316	2131	2689	1965	14451	6712	4790
Crop Protection	682	95	209	162	8221	658	845
Purchased Seed	803	78	161	166	4094	415	532
Hire of Machinery	7593	2128	2689	1558	7418	4527	3551
Transport	420	48	205	41	432	300	195
Livestock (A.I. Vet etc.)	8937	1634	1447	1923	1085	4766	2831
Casual Labour	522	59	78	62	204	584	174
Other	7015	871	900	1009	1522	3681	2014
<b>Sub-Total</b>	<b>60761</b>	<b>9551</b>	<b>13507</b>	<b>11931</b>	<b>40071</b>	<b>38182</b>	<b>22557</b>
Fodder Crop Adjustment	-744	-225	-325	-109	-82	-558	-326
<b>TOTAL DIRECT COSTS</b>	<b>60016</b>	<b>9311</b>	<b>13180</b>	<b>11820</b>	<b>39987</b>	<b>37623</b>	<b>22225</b>
<b>OVERHEAD COSTS (€)</b>							
Rent of Conacre	3746	673	1168	1007	7605	3475	1993
Car, Electricity, Phone	4421	1559	1477	1462	1832	3019	2043
Current Hired Labour	4490	214	367	562	3861	2176	1319
Interest Charges	3176	384	479	381	1562	1315	964
Machinery Depreciation	6936	1795	2337	2417	7957	4969	3443
Machinery Operating	9881	2684	3666	3309	10698	7390	4998
of which Fuel & Lub	4571	1359	1749	1685	5849	3600	2457
Buildings Depreciation	3595	783	980	707	1097	2194	1354
Buildings Maintenance	1991	521	625	697	1030	1462	887
Land Improvement Depreciation	427	117	130	114	216	229	180
Land Improvement Maintenance	1785	617	812	864	1023	1482	966
Lime	531	122	142	170	354	332	224
Other	5037	1634	2011	1949	3638	3270	2541
<b>OVERHEAD COSTS</b>	<b>45486</b>	<b>10980</b>	<b>14053</b>	<b>13469</b>	<b>40519</b>	<b>30982</b>	<b>20689</b>
<b>TOTAL NET EXPENSES</b>	<b>105503</b>	<b>20306</b>	<b>27234</b>	<b>25292</b>	<b>80508</b>	<b>68605</b>	<b>42919</b>
<b>Distribution - % of farms</b>							
<b>Costs % Output</b>	23.3	19.3	15.5	26.3	11.2	10.2	18.6
50 -< 60	30.8	16.4	21.8	23.2	21.6	18.8	21.8
60 -< 70	25.3	19	21.1	18.8	31.2	30	22.1
70 -< 80	13.3	20	16.5	18.8	19.4	14.4	17.3
80 -< 90	5.4	10.4	11.5	0	8.2	0	8.5
90 +	0	14.9	13.6	0	0	0	11.8
= Total	100	100	100	100	100	100	100
<b>Avg %</b>	<b>60</b>	<b>69.1</b>	<b>68.7</b>	<b>64.4</b>	<b>67.2</b>	<b>88.9</b>	<b>67.9</b>





**Table - 09B (2011) Resources per Farm by European Size (TSO) - All Farms**

Size (TSO)	0 - 8,000	8,000 - 15000	15,000 - 25000	25,000 - 50000	50,000 - 100000	> 100,000	All Sizes
<b>No. of Farms in Sample</b>	85	187	173	169	164	244	1022
<b>Per Cent of Population</b>	18.6	28.3	18.4	13.1	9.4	11.8	99.8
<b>LAND (ha)</b>							
Area Owned	17.6	24.1	37	48.5	50.2	61.8	35.4
Total Area	18.4	26.4	41.2	56.5	60.7	87.3	42
Tillage	0.1	0.4	1.5	5.2	9.2	16.8	4
of which Total Cereals	0	0	1.4	4.6	8.1	12.6	3.2
" Potatoes	0	0	0	0	0	0	0.1
Grassland Silage	3.4	5.6	7.9	10.5	14.2	22.9	9.1
Hay	0.2	0.8	1.1	1.3	0.9	0.8	0.8
Pasture	11	14.6	21.6	30.9	31.1	40.8	22
Rough Grazing	1.6	2.5	5.2	5.5	2	1.6	3.1
<b>U.A.A</b>	<b>17.3</b>	<b>25.2</b>	<b>39.3</b>	<b>54.5</b>	<b>58.6</b>	<b>83.9</b>	<b>40.3</b>
Remainder of Farm	1.1	1.2	1.9	2	2.2	3.4	1.8
Forage & Crop Acreage	16.4	23.9	36.6	51.5	57	81.9	38.5
<b>LIVESTOCK</b>							
<b>Cattle</b>							
Dairy Cows	0	0	0.4	2.6	22.6	74.1	11.3
Other Cows	4.3	9.9	14.6	16.4	14.4	5.2	10.4
Heifers-in-Calf	0.4	0.7	1.1	1.6	3.3	11.4	2.3
< 1 Year Old	4.6	10.3	17.2	24.5	30.2	52.8	19.3
1 - 2 Year Old Male	3.9	3.7	6.5	14.7	11.9	12.5	7.5
1 - 2 Year Old Female	1.3	3.5	5.2	7.7	11.9	17.6	6.4
=> 2 Year Old Male	1.9	1.5	2.9	5	4.3	1.8	2.6
=> 2 Year Old Female	0.3	1	1.1	1.7	3.5	2	1.4
Bulls	0.1	0.4	0.5	0.6	0.9	1.1	0.5
<b>Total Cattle</b>	<b>16.7</b>	<b>30.9</b>	<b>49.6</b>	<b>74.9</b>	<b>102.6</b>	<b>177.7</b>	<b>61.6</b>
<b>Sheep (avg. no)</b>							
Ewes	6.1	13.4	31.2	56	40	20.2	24.2
Other Sheep	7.3	11.3	27.8	56.8	41.3	18.1	23.2
<b>Total Sheep</b>	<b>13.4</b>	<b>24.7</b>	<b>59</b>	<b>112.8</b>	<b>81.4</b>	<b>38.3</b>	<b>47.5</b>
<b>Grazing Livestock Units</b>							
Dairy Cows	0	0	0.4	2.6	22.6	74.1	11.3
Other Cattle	11.4	20.3	31.9	46.5	49.3	53.3	30.9
Sheep	1.7	3.1	7.3	14.3	10.6	5.2	6
Horses	0.6	0.2	0.4	0.2	0.3	0.3	0.4
<b>Total Livestock Units</b>	<b>13.7</b>	<b>23.7</b>	<b>40.1</b>	<b>63.6</b>	<b>82.7</b>	<b>133</b>	<b>48.6</b>
<b>LABOUR UNITS</b>							
Family	0.8	0.91	1.03	1.21	1.32	1.44	1.05
<b>Total</b>	<b>0.8</b>	<b>0.92</b>	<b>1.05</b>	<b>1.26</b>	<b>1.44</b>	<b>1.86</b>	<b>1.13</b>

**Table - 09C (2011) Gross Output and Direct Payments by European Size (TSO) - All Farms**

Size (TSO)	0 - 8,000	8,000 - 15,000	15,000 - 25,000	25,000 - 50000	50,000 - 100000	> 100,000	All Sizes
<b>No. of Farms in Sample</b>	85	187	173	169	164	244	1022
<b>Per Cent of Population</b>	18.6	28.3	18.4	13.1	9.4	11.8	99.8
<b>(€) GROSS OUTPUT</b>							
<b>LIVESTOCK</b>							
Dairying	3	0	702	4222	40705	140934	21178
of which milk	0	0	622	3986	39028	137278	20542
Cattle	6114	11027	18132	29288	30096	41743	19254
of which Suckler Welfare Scheme	87	248	435	586	488	88	301
Sheep & Wool	796	1580	3701	7035	5663	2915	3087
of which Sheep Welfare Scheme	65	107	236	403	251	92	174
Pigs	0	0	0	19	0	1577	189
Poultry	0	1	0	0	0	0	0
Horses	-69	8	14	85	12	-116	-9
Other	0	0	0	0	0	0	0
<b>Sub-Total Livestock</b>	<b>6845</b>	<b>12616</b>	<b>22550</b>	<b>40649</b>	<b>76475</b>	<b>187054</b>	<b>43698</b>
of which Disease Compensation	5	28	15	61	628	234	106
<b>CROPS</b>							
Wheat	0	0	0	879	3611	10519	1701
Barley - Feeding	0	0	1084	3578	6071	5832	2008
Barley - Malting	0	0	0	0	0	0	296
Oats	0	0	0	0	886	2317	483
Potatoes	0	0	0	0	0	0	681
Other	655	707	958	1412	2177	4488	1422
of which Forestry Premium	248	272	463	290	256	288	306
<b>Sub-Total Crops</b>	<b>669</b>	<b>1299</b>	<b>2526</b>	<b>7128</b>	<b>13968</b>	<b>28552</b>	<b>6591</b>
<b>TOTAL LIVESTOCK &amp; CROPS</b>	<b>7514</b>	<b>13915</b>	<b>25076</b>	<b>47777</b>	<b>90444</b>	<b>215605</b>	<b>50289</b>
+ Machinery Hire Revenue	23	373	430	603	683	829	432
+ Other Current Receipts	10	58	136	419	303	602	198
+ Decoupled Direct Payments / Subs	7297	10149	16889	23552	26857	33569	16969
of which Single Farm Payment	4798	6478	11226	18825	21578	28201	12658
" REPS	752	1714	3021	2584	3022	3527	2227
" DAS	1563	1799	2288	1924	1877	1663	1853
" Other Subsidies	253	265	589	639	794	740	478
AEOS	122	134	200	103	73	0	118
+ Income from Land Let	211	208	268	398	188	220	244
+ Income from Quota Let	0	0	10	12	29	39	11
- Inter-Enterprise Transfers	35	13	98	631	1821	3951	750
<b>TOTAL GROSS OUTPUT</b>	<b>14908</b>	<b>24612</b>	<b>42578</b>	<b>72222</b>	<b>116943</b>	<b>247028</b>	<b>67375</b>

**Table - 09D (2011) Direct and Overhead Costs by European Size (TSO) - All Farms**

Size (TSO)	0 - 8,000	8,000 - 15,000	15,000 - 25,000	25,000 - 50000	50,000 - 100000	> 100,000	All Sizes
<b>No. of Farms in Sample</b>	85	187	173	169	164	244	1022
<b>Per Cent of Population</b>	18.6	28.3	18.4	13.1	9.4	11.8	99.8
<b>DIRECT COSTS (€)</b>							
Purchased Concentrates	1181	1953	3951	7370	12815	27934	6985
Purchased Bulky Feed	239	192	409	599	1095	2386	639
Fertiliser	902	1571	2605	5226	9244	18057	4790
Crop Protection	39	134	276	910	1795	3887	845
Purchased Seed	27	98	217	558	1029	2444	532
Hire of Machinery	1195	1767	2648	3928	5913	10675	3551
Transport	66	57	90	222	408	696	195
Livestock (A.I. Vet etc.)	638	1047	1797	2766	4407	11024	2831
Casual Labour	0	27	96	85	358	879	174
Other	448	650	1042	1553	3209	8849	2014
<b>Sub-Total</b>	<b>4736</b>	<b>7495</b>	<b>13132</b>	<b>23216</b>	<b>40273</b>	<b>86831</b>	<b>22557</b>
Fodder Crop Adjustment	-164	-113	-230	-467	-371	-1051	-326
<b>TOTAL DIRECT COSTS</b>	<b>4571</b>	<b>7380</b>	<b>12883</b>	<b>22744</b>	<b>39900</b>	<b>85779</b>	<b>22225</b>
<b>OVERHEAD COSTS (€)</b>							
Rent of Conacre	202	454	1046	1944	3007	9252	1993
Car, Electricity, Phone	956	1357	1851	2079	3086	4843	2043
Current Hired Labour	29	93	219	725	1717	8370	1319
Interest Charges	93	210	592	853	1618	4341	964
Machinery Depreciation	1130	1531	2306	4063	5766	10930	3443
Machinery Operating	1573	2134	3401	6177	8694	15541	4998
of which Fuel & Lub	695	1016	1718	3103	4165	7782	2457
Buildings Depreciation	371	652	853	1289	2392	4623	1354
Buildings Maintenance	316	385	570	980	1657	2776	887
Land Improvement Depreciation	53	104	128	176	272	576	180
Land Improvement Maintenance	431	543	839	1276	1424	2321	966
Lime	43	66	182	232	499	730	224
Other	991	1461	2146	2983	4059	6508	2541
<b>OVERHEAD COSTS</b>	<b>6144</b>	<b>8923</b>	<b>13952</b>	<b>22545</b>	<b>33692</b>	<b>70081</b>	<b>20689</b>
<b>TOTAL NET EXPENSES</b>	<b>10715</b>	<b>16305</b>	<b>26854</b>	<b>45294</b>	<b>73594</b>	<b>155861</b>	<b>42919</b>
<b>Distribution - % of farms</b>							
<b>Costs % Output</b>	15.7	16.4	24.2	17.8	17.9	20.7	18.6
50 -< 60	15.8	20.7	18.9	25.4	25.2	31.5	21.8
60 -< 70	19	21.9	20.1	19.1	30.7	26.8	22.1
70 -< 80	14.3	19.1	18.1	23.2	16	11.3	17.3
80 -< 90	0	9.3	7.4	10.5	7.2	6.5	8.5
90 +	26.3	12.6	11.3	0	0	0	11.8
= Total	100	100	100	100	100	100	100
<b>Avg %</b>	<b>80.2</b>	<b>68</b>	<b>64.7</b>	<b>64.3</b>	<b>63</b>	<b>61.2</b>	<b>67.9</b>







**Table - 10B (2011) Resources per Farm by System of Farming - Full-Time Farms**

System	Dairying	Cattle Rearing	Cattle Other	Sheep	Tillage	Mixed Livestock	All Sizes
<b>No. of Farms in Sample</b>	242	24	73	47	62	76	524
<b>Per Cent of Population</b>	13.7	1.6	5	3.8	2.8	3.3	30.5
<b>LAND (ha)</b>							
Area Owned	46.8	67	62.5	59.5	77.9	50.4	55.4
Total Area	59.7	72.8	72.9	69.2	120.7	67.2	70.3
Tillage	2.4	1.2	4.3	2	82.5	4	10.2
of which Total Cereals	1.2	0	3.5	1.2	69.6	3.1	8.1
" Potatoes	0	0	0	0	0	0	0.4
Grassland Silage	20	16.4	15.6	10.6	7.7	18.1	16.5
Hay	0.4	2.5	1.9	1.1	2	1	1.1
Pasture	32.1	42.7	44.1	41.4	21.3	38.8	35.6
Rough Grazing	1.6	3.9	3.9	9.9	1.4	2.1	3.2
<b>U.A.A</b>	<b>57.1</b>	<b>69.9</b>	<b>70.9</b>	<b>65.6</b>	<b>117.3</b>	<b>64.8</b>	<b>67.6</b>
Remainder of Farm	2.6	2.9	2	3.6	3.4	2.3	2.7
Forage & Crop Acreage	55.8	64.8	67.6	63.2	114.6	62.9	65.4
<b>LIVESTOCK</b>							
<b>Cattle</b>							
Dairy Cows	69.4	0	0	0	0	42.7	36
Other Cows	1.5	59.1	31	17.2	13	7.8	13.3
Heifers-in-Calf	9.7	4	2.5	0.9	1.2	6.2	5.9
< 1 Year Old	41	54.6	44	16.1	17.1	50.4	37.9
1 - 2 Year Old Male	5.7	6.3	28.2	6.1	13.4	18.2	11.6
1 - 2 Year Old Female	13.4	13.4	17.7	5.8	8.5	14.9	12.9
=> 2 Year Old Male	0.6	0.2	9.7	1.9	4.7	3.9	3
=> 2 Year Old Female	1.8	2.3	4.9	1.7	1.6	2.7	2.4
Bulls	1	1.8	1	0.7	0.5	0.9	0.9
<b>Total Cattle</b>	<b>143.3</b>	<b>141.6</b>	<b>139</b>	<b>50.4</b>	<b>60</b>	<b>147.2</b>	<b>123.5</b>
<b>Sheep (avg. no)</b>							
Ewes	1.7	14.8	35.2	227.5	43.1	25.5	43
Other Sheep	2.2	13.4	32.4	230	43	22.8	42.7
Total Sheep	3.8	28.2	67.6	457.5	86.1	48.4	85.6
<b>Grazing Livestock Units</b>							
Dairy Cows	69.4	0	0	0	0	42.7	36
Other Cattle	36.1	89.6	91.1	33.4	39.9	56.4	50.3
Sheep	0.5	3.7	9.2	57.8	12.3	6.4	11.1
Horses	0.1	0.7	1	0.4	0.5	0.8	0.4
<b>Total Livestock Units</b>	<b>106.1</b>	<b>94</b>	<b>101.3</b>	<b>91.6</b>	<b>52.7</b>	<b>106.4</b>	<b>97.9</b>
<b>LABOUR UNITS</b>							
Family	1.39	1.29	1.39	1.29	1.21	1.43	1.36
Total	1.63	1.43	1.48	1.41	1.69	1.66	1.58

**Table - 10C (2011) Gross Output and Direct Payments by System of Farming - Full-Time Farms**

System	Dairying	Cattle Rearing	Cattle Other	Sheep	Tillage	Mixed Livestock	All Sizes
<b>No. of Farms in Sample</b>	242	24	73	47	62	76	524
<b>Per Cent of Population</b>	13.7	1.6	5	3.8	2.8	3.3	30.5
<b>(€) GROSS OUTPUT</b>							
<b>LIVESTOCK</b>							
Dairying	130884	0	0	0	0	77515	67569
of which milk	127394	0	0	0	0	73974	65605
Cattle	28226	56504	56176	20188	24234	40628	34354
of which Suckler Welfare Scheme	2	1959	1110	491	478	170	416
Sheep & Wool	279	2248	5264	29609	5366	3618	5761
of which Sheep Welfare Scheme	18	151	329	1289	219	188	275
Pigs	0	0	0	65	0	5522	618
Poultry	0	0	0	8	0	0	1
Horses	-92	-250	198	30	-98	157	-11
Other	0	0	0	0	0	0	0
<b>Sub-Total Livestock</b>	<b>159297</b>	<b>58502</b>	<b>61637</b>	<b>49900</b>	<b>29502</b>	<b>127440</b>	<b>108293</b>
of which Disease Compensation	218	617	46	274	0	1191	306
<b>CROPS</b>							
Wheat	284	0	0	0	52747	0	5177
Barley - Feeding	895	0	3795	0	36568	1674	4787
Barley - Malting	0	0	0	0	0	0	536
Oats	0	0	0	0	11762	0	1163
Potatoes	0	0	0	0	0	0	1969
Other	465	1189	686	527	22341	948	2632
of which Forestry Premium	196	805	224	168	688	204	277
<b>Sub-Total Crops</b>	<b>1953</b>	<b>1979</b>	<b>4845</b>	<b>1976</b>	<b>147316</b>	<b>5058</b>	<b>16264</b>
<b>TOTAL LIVESTOCK &amp; CROPS</b>	<b>161250</b>	<b>60481</b>	<b>66482</b>	<b>51876</b>	<b>176818</b>	<b>132498</b>	<b>124556</b>
+ Machinery Hire Revenue	235	1894	430	82	4743	364	772
+ Other Current Receipts	361	1324	169	364	977	282	431
+ Decoupled Direct Payments / Subs	23427	29857	34570	26661	43921	27599	28383
of which Single Farm Payment	18498	26070	29442	20201	40132	21075	23220
" REPS	3026	1748	2615	3368	2384	4049	2985
" DAS	1759	1960	2216	2716	686	2300	1926
" Other Subsidies	626	230	626	1665	939	574	759
AEOS	6	7	164	77	196	11	59
+ Income from Land Let	96	1554	320	34	797	129	274
+ Income from Quota Let	36	0	0	0	0	117	29
- Inter-Enterprise Transfers	2719	142	1671	863	3171	2739	2214
<b>TOTAL GROSS OUTPUT</b>	<b>182718</b>	<b>95710</b>	<b>100492</b>	<b>78133</b>	<b>224814</b>	<b>158309</b>	<b>152389</b>

**Table - 10D (2011) Direct and Overhead Costs by System of Farming - Full-Time Farms**

System	Dairying	Cattle Rearing	Cattle Other	Sheep	Tillage	Mixed Livestock	All Sizes
<b>No. of Farms in Sample</b>	242	24	73	47	62	76	524
<b>Per Cent of Population</b>	13.7	1.6	5	3.8	2.8	3.3	30.5
<b>DIRECT COSTS (€)</b>							
Purchased Concentrates	22623	8340	12052	9139	5041	24106	16925
Purchased Bulky Feed	1920	1270	1556	795	253	1330	1462
Fertiliser	11882	7425	7161	4074	28199	10168	11197
Crop Protection	726	387	811	357	16972	993	2211
Purchased Seed	849	281	589	392	8153	656	1374
Hire of Machinery	7950	4862	5212	2755	11832	6721	6897
Transport	438	79	582	59	1050	456	453
Livestock (A.I. Vet etc.)	9419	5112	4077	3508	2044	6891	6592
Casual Labour	546	609	138	109	512	978	472
Other	7351	2779	2169	1911	3069	5366	4943
<b>Sub-Total</b>	<b>63704</b>	<b>31143</b>	<b>34347</b>	<b>23100</b>	<b>77124</b>	<b>57664</b>	<b>52526</b>
Fodder Crop Adjustment	-762	-1244	-636	-268	-118	-929	-664
<b>TOTAL DIRECT COSTS</b>	<b>62941</b>	<b>29893</b>	<b>33706</b>	<b>22824</b>	<b>77000</b>	<b>56733</b>	<b>51858</b>
<b>OVERHEAD COSTS (€)</b>							
Rent of Conacre	3987	2366	2906	2219	17892	5629	4968
Car, Electricity, Phone	4577	3174	2101	2113	2557	3684	3495
Current Hired Labour	4811	2266	1563	1949	9554	3567	4078
Interest Charges	3359	2169	1099	961	2860	2045	2427
Machinery Depreciation	7257	5426	5236	4269	15960	6479	7168
Machinery Operating	10311	7657	9092	6172	21708	10587	10529
of which Fuel & Lub	4794	4142	4520	3215	12137	5109	5229
Buildings Depreciation	3802	1742	2264	1143	2274	3329	2905
Buildings Maintenance	2078	1703	1570	1200	2141	2236	1886
Land Improvement Depreciation	447	209	302	195	389	361	363
Land Improvement Maintenance	1850	1506	1471	1512	1783	1932	1729
Lime	564	371	447	333	681	505	509
Other	5230	3649	3708	3332	5818	4296	4604
<b>OVERHEAD COSTS</b>	<b>47712</b>	<b>31867</b>	<b>31313</b>	<b>25067</b>	<b>82937</b>	<b>44145</b>	<b>44153</b>
<b>TOTAL NET EXPENSES</b>	<b>110653</b>	<b>61766</b>	<b>65023</b>	<b>47899</b>	<b>159943</b>	<b>100879</b>	<b>96015</b>
<b>Distribution - % of farms</b>							
<b>Costs % Output</b>	24.4	0	16.2	0	0	16	20.3
50 -< 60	29.5	0	21.1	28.5	19.6	25.7	26.3
60 -< 70	25.8	0	29.8	16	25.6	40.2	26.9
70 -< 80	13.1	0	0	25.1	27.8	10.4	15.7
80 -< 90	5.2	0	15.2	0	0	0	7.3
90 +	0	0	0	0	0	0	3.6
= Total	100	100	100	100	100	100	100
<b>Avg %</b>	<b>59.8</b>	<b>65.8</b>	<b>66.9</b>	<b>60.6</b>	<b>70.2</b>	<b>62.1</b>	<b>62.6</b>





**Table - 11B (2011) Resources per Farm by System of Farming - Part-Time Farms**

System	Dairying	Cattle Rearing	Cattle Other	Sheep	Tillage	Mixed Livestock	All Sizes
<b>No. of Farms in Sample</b>	13	169	184	80	40	12	498
<b>Per Cent of Population</b>	0.9	23.7	27.4	10.5	4.3	2.2	69.3
<b>LAND (ha)</b>							
Area Owned	24.8	26.3	25.4	30.1	29.7	22.9	26.6
Total Area	24.1	29.6	28.3	33.6	32.1	24.5	29.6
Tillage	0	0	0.3	0.2	16.6	0.3	1.2
of which Total Cereals	0	0	0.2	0	15.7	0	1.1
" Potatoes	0	0	0	0	0	0	0
Grassland Silage	7.1	6.7	6.6	3.2	3.3	4.3	5.9
Hay	0	0.6	0.7	0.7	1.3	0.5	0.7
Pasture	13.3	17	16.6	17	7.6	11.6	16
Rough Grazing	1.5	2.8	1.2	9	0.5	3.9	3
<b>U.A.A</b>	<b>23.3</b>	<b>28.4</b>	<b>26.9</b>	<b>32.4</b>	<b>30.5</b>	<b>22</b>	<b>28.2</b>
Remainder of Farm	0.7	1.2	1.4	1.2	1.5	2.4	1.4
Forage & Crop Acreage	21	26	25.6	31.6	29.6	18.7	26.6
<b>LIVESTOCK</b>							
<b>Cattle</b>							
Dairy Cows	22	0	0	0	0	3.9	0.4
Other Cows	0.2	17.8	5.5	4.9	1.8	2.3	9.2
Heifers-in-Calf	1.9	1	0.7	0.5	0.2	0.8	0.8
< 1 Year Old	8.9	14.3	12.5	4.8	2.6	6.8	11.1
1 - 2 Year Old Male	2	1.5	11.3	2.5	4.1	1	5.7
1 - 2 Year Old Female	3.8	2.8	5.6	1.7	0.6	1.9	3.6
=> 2 Year Old Male	0.2	0.2	5.1	1	2.8	0.2	2.4
=> 2 Year Old Female	1.4	0.7	1.4	0.3	0	0.5	0.9
Bulls	0.6	0.5	0.2	0.2	0.1	0	0.3
<b>Total Cattle</b>	<b>40.4</b>	<b>38.8</b>	<b>42.3</b>	<b>15.9</b>	<b>12.2</b>	<b>17.5</b>	<b>34.4</b>
<b>Sheep (avg. no)</b>							
Ewes	0	1.3	4.1	82.4	14.1	15.1	16
Other Sheep	0	1.9	4.9	69.1	14.7	19.5	14.7
Total Sheep	0	3.2	9	151.5	28.8	34.6	30.7
<b>Grazing Livestock Units</b>							
Dairy Cows	22	0	0	0	0	3.9	0.4
Other Cattle	9.8	25.1	28.2	10.6	8.8	7.4	22.3
Sheep	0	0.4	1.2	18.3	4	4	3.8
Horses	0	0.1	0.1	0.3	0	5.5	0.3
<b>Total Livestock Units</b>	<b>31.7</b>	<b>25.7</b>	<b>29.5</b>	<b>29.2</b>	<b>12.8</b>	<b>20.8</b>	<b>26.9</b>
<b>LABOUR UNITS</b>							
Family	1.16	0.91	0.88	0.96	0.83	1.19	0.92
Total	1.17	0.92	0.9	0.97	0.86	1.2	0.93

**Table - 11C (2011) Gross Output and Direct Payments by System of Farming - Part-Time Farms**

System	Dairying	Cattle Rearing	Cattle Other	Sheep	Tillage	Mixed Livestock	All Sizes
<b>No. of Farms in Sample</b>	13	169	184	80	40	12	498
<b>Per Cent of Population</b>	0.9	23.7	27.4	10.5	4.3	2.2	69.3
<b>(€) GROSS OUTPUT</b>							
<b>LIVESTOCK</b>							
Dairying	38063	0	0	6	0	6363	751
of which milk	36249	0	0	0	0	5616	700
Cattle	5077	13984	16000	6375	4609	4711	12605
of which Suckler Welfare Scheme	0	498	138	135	34	46	250
Sheep & Wool	0	210	619	9384	1949	1292	1909
of which Sheep Welfare Scheme	0	12	38	647	107	142	129
Pigs	0	0	0	0	0	0	0
Poultry	0	0	0	0	0	0	0
Horses	0	21	2	-66	-23	-164	-9
Other	0	0	0	0	0	0	0
<b>Sub-Total Livestock</b>	<b>43140</b>	<b>14216</b>	<b>16620</b>	<b>15699</b>	<b>6535</b>	<b>12203</b>	<b>15257</b>
of which Disease Compensation	0	36	14	0	0	18	19
<b>CROPS</b>							
Wheat	0	0	0	0	0	0	171
Barley - Feeding	0	0	0	0	10974	0	784
Barley - Malting	0	0	0	0	0	0	191
Oats	0	0	0	0	0	0	183
Potatoes	0	0	0	0	0	0	114
Other	414	571	828	529	3520	1787	889
of which Forestry Premium	414	322	299	418	153	326	318
<b>Sub-Total Crops</b>	<b>414</b>	<b>579</b>	<b>1073</b>	<b>702</b>	<b>24358</b>	<b>2112</b>	<b>2332</b>
<b>TOTAL LIVESTOCK &amp; CROPS</b>	<b>43554</b>	<b>14795</b>	<b>17693</b>	<b>16401</b>	<b>30893</b>	<b>14315</b>	<b>17588</b>
+ Machinery Hire Revenue	0	319	373	109	31	199	282
+ Other Current Receipts	118	66	115	132	73	42	96
+ Decoupled Direct Payments / Subs	9406	11124	12745	12109	13562	8063	11943
of which Single Farm Payment	5530	6805	9327	6888	10982	5233	8007
" REPS	1943	2039	1550	2601	2267	515	1894
" DAS	1541	2026	1644	2375	309	2240	1821
" Other Subsidies	508	266	262	898	111	263	354
AEOS	0	194	121	184	0	75	144
+ Income from Land Let	1013	37	308	327	517	0	231
+ Income from Quota Let	0	0	7	0	0	0	3
- Inter-Enterprise Transfers	669	5	119	34	517	279	105
<b>TOTAL GROSS OUTPUT</b>	<b>53481</b>	<b>26144</b>	<b>31079</b>	<b>28883</b>	<b>44761</b>	<b>22280</b>	<b>29943</b>

**Table - 11D (2011) Direct and Overhead Costs by System of Farming - Part-Time Farms**

System	Dairying	Cattle Rearing	Cattle Other	Sheep	Tillage	Mixed Livestock	All Sizes
<b>No. of Farms in Sample</b>	13	169	184	80	40	12	498
<b>Per Cent of Population</b>	0.9	23.7	27.4	10.5	4.3	2.2	69.3
<b>DIRECT COSTS (€)</b>							
Purchased Concentrates	7822	1758	3279	2944	862	2937	2609
Purchased Bulky Feed	725	245	300	309	52	416	277
Fertiliser	3420	1757	1872	1192	5492	1590	1969
Crop Protection	72	75	99	91	2518	162	243
Purchased Seed	162	63	83	82	1449	58	162
Hire of Machinery	2607	1935	2228	1119	4541	1274	2078
Transport	172	46	136	34	30	69	81
Livestock (A.I. Vet etc.)	2227	1388	966	1343	460	1616	1175
Casual Labour	195	20	67	45	4	0	43
Other	2318	736	669	678	515	1184	724
<b>Sub-Total</b>	<b>19720</b>	<b>8022</b>	<b>9698</b>	<b>7838</b>	<b>15923</b>	<b>9306</b>	<b>9361</b>
Fodder Crop Adjustment	-497	-153	-268	-50	-58	-8	-177
<b>TOTAL DIRECT COSTS</b>	<b>19223</b>	<b>7854</b>	<b>9428</b>	<b>7786</b>	<b>15866</b>	<b>9298</b>	<b>9178</b>
<b>OVERHEAD COSTS (€)</b>							
Rent of Conacre	383	553	850	563	900	283	683
Car, Electricity, Phone	2244	1444	1363	1224	1360	2034	1404
Current Hired Labour	12	69	149	54	151	114	104
Interest Charges	632	257	366	168	716	233	320
Machinery Depreciation	2449	1538	1807	1738	2742	2731	1803
Machinery Operating	3882	2331	2674	2259	3523	2650	2563
of which Fuel & Lub	1473	1162	1243	1124	1752	1363	1236
Buildings Depreciation	712	715	746	547	329	514	671
Buildings Maintenance	771	437	453	513	307	315	447
Land Improvement Depreciation	140	110	99	85	103	35	99
Land Improvement Maintenance	881	554	691	626	528	814	631
Lime	74	104	86	110	141	74	99
Other	2337	1492	1701	1441	2217	1749	1633
<b>OVERHEAD COSTS</b>	<b>14443</b>	<b>9501</b>	<b>10898</b>	<b>9218</b>	<b>12876</b>	<b>11472</b>	<b>10357</b>
<b>TOTAL NET EXPENSES</b>	<b>33666</b>	<b>17370</b>	<b>20328</b>	<b>17005</b>	<b>28742</b>	<b>20769</b>	<b>19541</b>
<b>Distribution - % of farms</b>							
<b>Costs % Output</b>	0	19.4	15.4	27.2	0	0	17.8
50 -< 60	0	16	21.9	21.2	23	0	19.8
60 -< 70	0	18.4	19.5	19.8	34.8	0	19.9
70 -< 80	0	20	17.5	16.5	0	0	18.1
80 -< 90	0	11	10.9	0	0	0	9
90 +	0	15.3	14.9	0	0	0	15.4
= Total	100	100	100	100	100	100	100
<b>Avg %</b>	<b>63</b>	<b>69.3</b>	<b>69.1</b>	<b>65.8</b>	<b>65.2</b>	<b>128.5</b>	<b>70.3</b>







**Table - 12B (2011) Resources per Farm by System of Farming - Objective One Region**

System	Dairying	Cattle Rearing	Cattle Other	Sheep	Tillage	Mixed Livestock	All Sizes
<b>No. of Farms in Sample</b>	60	107	139	67	45	33	451
<b>Per Cent of Population</b>	3.2	14.4	18.6	9.3	1.6	2.2	49.6
<b>LAND (ha)</b>							
Area Owned	41.2	26.8	28.1	35.1	47.6	34	30.8
Total Area	54.4	30.7	31.5	42	68.1	44	36.6
Tillage	1.8	0.1	0.6	0.5	44.7	1.8	2
of which Total Cereals	0	0	0.4	0	36.5	0	1.6
" Potatoes	0	0	0	0	0	0	0.1
Grassland Silage	19	6.9	7.2	5.2	3.5	10.3	7.5
Hay	0.5	0.6	0.8	0.8	2.2	0.6	0.8
Pasture	29.6	18.3	18.8	21	12.6	23.1	19.8
Rough Grazing	0.6	2.3	1.5	11.7	0.4	4.4	3.7
<b>U.A.A</b>	<b>51.6</b>	<b>29.6</b>	<b>30.1</b>	<b>40.7</b>	<b>65.8</b>	<b>41.6</b>	<b>35.1</b>
Remainder of Farm	2.8	1.1	1.4	1.4	2.3	2.4	1.5
Forage & Crop Acreage	51.3	27.2	28.9	32.8	64.2	38.4	32.2
<b>LIVESTOCK</b>							
<b>Cattle</b>							
Dairy Cows	64.4	0	0	0	0	20.6	5.2
Other Cows	1.2	18.3	8	7.8	6.8	3.8	10.3
Heifers-in-Calf	10.3	1.1	1	0.6	0.9	3.1	1.6
< 1 Year Old	34.9	14.8	13.8	7.6	9.9	25.8	14.7
1 - 2 Year Old Male	4.2	1.3	12.2	3.5	5.9	8.3	6.5
1 - 2 Year Old Female	11.6	3	6.2	3.1	2.8	8	5
=> 2 Year Old Male	0.2	0.1	5.6	1	2.7	1.4	2.5
=> 2 Year Old Female	1.9	0.8	1.5	0.7	0.4	1.1	1.2
Bulls	0.9	0.6	0.3	0.3	0.3	0.5	0.4
<b>Total Cattle</b>	<b>128.8</b>	<b>40.1</b>	<b>48.7</b>	<b>24.6</b>	<b>29.7</b>	<b>72.3</b>	<b>47.3</b>
<b>Sheep (avg. no)</b>							
Ewes	2.6	3.3	8.7	101.4	22.6	20.8	25.3
Other Sheep	4.2	4.1	9.5	94.5	23.9	20.6	24.7
Total Sheep	6.8	7.5	18.2	195.9	46.5	41.4	49.9
<b>Grazing Livestock Units</b>							
Dairy Cows	64.4	0	0	0	0	20.6	5.2
Other Cattle	31.8	26	32.8	16.3	19.3	27.4	26.9
Sheep	0.9	1	2.5	24.3	6.4	5.2	6.3
Horses	0.1	0.3	0.2	0.1	0.4	3.3	0.4
<b>Total Livestock Units</b>	<b>97.1</b>	<b>27.3</b>	<b>35.5</b>	<b>40.6</b>	<b>26</b>	<b>56.5</b>	<b>38.8</b>
<b>LABOUR UNITS</b>							
Family	1.38	0.91	0.93	1.03	0.88	1.25	0.99
Total	1.65	0.92	0.96	1.06	1.15	1.34	1.03

**Table - 12C (2011) Gross Output and Direct Payments by System of Farming - Objective One Region**

System	Dairying	Cattle Rearing	Cattle Other	Sheep	Tillage	Mixed Livestock	All Sizes
<b>No. of Farms in Sample</b>	60	107	139	67	45	33	451
<b>Per Cent of Population</b>	3.2	14.4	18.6	9.3	1.6	2.2	49.6
<b>(€) GROSS OUTPUT</b>							
<b>LIVESTOCK</b>							
Dairying	116758	0	0	0	0	36436	9300
of which milk	114026	0	0	0	0	34297	9023
Cattle	24948	14792	19195	10358	11492	19549	16380
of which Suckler Welfare Scheme	0	500	228	242	179	93	287
Sheep & Wool	548	566	1338	13381	2786	2551	3441
of which Sheep Welfare Scheme	32	33	79	681	155	121	181
Pigs	0	0	0	26	0	3610	170
Poultry	0	0	0	3	0	0	1
Horses	0	-3	47	9	-115	-474	-7
Other	0	0	0	0	0	0	0
<b>Sub-Total Livestock</b>	<b>142254</b>	<b>15355</b>	<b>20580</b>	<b>23777</b>	<b>14163</b>	<b>61672</b>	<b>29285</b>
of which Disease Compensation	148	88	18	71	0	22	57
<b>CROPS</b>							
Wheat	0	0	0	0	19330	0	673
Barley - Feeding	0	0	378	0	18781	0	901
Barley - Malting	0	0	0	0	0	0	215
Oats	0	0	0	0	9643	0	355
Potatoes	0	0	0	0	0	0	625
Other	193	640	702	321	12393	987	987
of which Forestry Premium	53	324	191	48	418	332	208
<b>Sub-Total Crops</b>	<b>1353</b>	<b>684</b>	<b>1125</b>	<b>704</b>	<b>81730</b>	<b>3345</b>	<b>3756</b>
<b>TOTAL LIVESTOCK &amp; CROPS</b>	<b>143607</b>	<b>16038</b>	<b>21705</b>	<b>24481</b>	<b>95893</b>	<b>65017</b>	<b>33041</b>
+ Machinery Hire Revenue	378	258	114	155	2955	204	281
+ Other Current Receipts	332	63	49	117	167	26	88
+ Decoupled Direct Payments / Subs	21387	11937	14538	14177	23162	15693	14507
of which Single Farm Payment	15330	7474	10594	9224	19656	11271	10077
" REPS	3109	1965	1602	2152	2818	1330	1938
" DAS	2720	2225	2079	2523	616	2930	2237
" Other Subsidies	677	306	342	958	227	390	468
AEOS	36	246	158	124	72	48	161
+ Income from Land Let	0	44	201	165	707	0	143
+ Income from Quota Let	62	0	12	0	0	66	11
- Inter-Enterprise Transfers	2450	20	213	206	2120	1348	418
<b>TOTAL GROSS OUTPUT</b>	<b>163339</b>	<b>28086</b>	<b>36385</b>	<b>38801</b>	<b>121553</b>	<b>79612</b>	<b>47586</b>

**Table - 12D (2011) Direct and Overhead Costs by System of Farming - Objective One Region**

System	Dairying	Cattle Rearing	Cattle Other	Sheep	Tillage	Mixed Livestock	All Sizes
<b>No. of Farms in Sample</b>	60	107	139	67	45	33	451
<b>Per Cent of Population</b>	3.2	14.4	18.6	9.3	1.6	2.2	49.6
<b>DIRECT COSTS (€)</b>							
Purchased Concentrates	24875	2081	4221	5104	2446	14156	5512
Purchased Bulky Feed	1768	356	545	302	82	688	515
Fertiliser	10053	1891	2199	1855	14279	5358	3111
Crop Protection	672	96	143	131	8445	425	455
Purchased Seed	671	62	105	114	4884	292	301
Hire of Machinery	6195	1954	2414	1602	6955	2852	2548
Transport	1144	29	165	28	747	447	196
Livestock (A.I. Vet etc.)	7539	1559	1316	1806	1050	3778	1990
Casual Labour	598	2	20	5	412	447	82
Other	6504	716	765	851	2066	2773	1278
<b>Sub-Total</b>	<b>60019</b>	<b>8746</b>	<b>11893</b>	<b>11798</b>	<b>41365</b>	<b>31217</b>	<b>15987</b>
Fodder Crop Adjustment	-988	-186	-293	-113	197	-500	-266
<b>TOTAL DIRECT COSTS</b>	<b>59033</b>	<b>8537</b>	<b>11598</b>	<b>11682</b>	<b>41563</b>	<b>30718</b>	<b>15713</b>
<b>OVERHEAD COSTS (€)</b>							
Rent of Conacre	3889	563	921	1051	10187	2947	1441
Car, Electricity, Phone	4633	1503	1375	1546	1848	2896	1743
Current Hired Labour	5556	143	461	428	5102	1265	889
Interest Charges	3288	413	373	305	2181	1153	659
Machinery Depreciation	8274	1821	2143	2125	8920	3922	2757
Machinery Operating	9648	2347	3169	2767	13438	5646	3738
of which Fuel & Lub	4859	1212	1608	1433	7226	2872	1920
Buildings Depreciation	3121	708	879	643	1328	1637	981
Buildings Maintenance	2085	515	572	681	1270	982	717
Land Improvement Depreciation	465	109	112	96	233	225	140
Land Improvement Maintenance	2041	570	778	713	1012	1268	818
Lime	440	68	75	126	139	154	112
Other	5147	1380	1704	1550	3562	2754	1917
<b>OVERHEAD COSTS</b>	<b>48147</b>	<b>10071</b>	<b>12486</b>	<b>11905</b>	<b>49080</b>	<b>24696</b>	<b>15801</b>
<b>TOTAL NET EXPENSES</b>	<b>107178</b>	<b>18632</b>	<b>24087</b>	<b>23589</b>	<b>90642</b>	<b>55414</b>	<b>31523</b>
<b>Distribution - % of farms</b>							
<b>Costs % Output</b>	0	20.4	15.3	27.9	0	0	18.6
50 -< 60	19.4	16.7	20.3	20.7	0	0	18.7
60 -< 70	32.2	18.8	19.7	17.6	34.5	33.5	21
70 -< 80	24.6	18.6	20.5	17.9	0	0	19.7
80 -< 90	0	11.5	11.9	0	0	0	9.6
90 +	0	14	12.4	0	0	0	12.4
= Total	100	100	100	100	100	100	100
<b>Avg %</b>	<b>64.1</b>	<b>68.4</b>	<b>68.7</b>	<b>64.1</b>	<b>71.4</b>	<b>98.3</b>	<b>68.9</b>





**Table - 13B (2011) Resources per Farm by System of Farming - Non-Objective One Region**

System	Dairying	Cattle Rearing	Cattle Other	Sheep	Tillage	Mixed Livestock	All Sizes
<b>No. of Farms in Sample</b>	195	86	118	60	57	55	571
<b>Per Cent of Population</b>	11.5	10.9	13.8	4.5	5.3	3.1	49.3
<b>LAND (ha)</b>							
Area Owned	46.8	31.4	35.2	48.2	50.3	46.4	40.6
Total Area	58	34.3	40.2	52.7	66.6	57.4	48.2
Tillage	2.4	0.1	1.4	1	41	3.3	5.7
of which Total Cereals	1.2	0	1.1	0	37.7	2.3	4.9
" Potatoes	0	0	0	0	0	0	0
Grassland Silage	19	8	9.1	6.2	6.4	14.5	11
Hay	0.4	0.9	1.1	0.9	1.4	1	0.9
Pasture	31.1	19	23.7	29.5	13	33	24.4
Rough Grazing	1.9	3.6	1.8	10.4	1.1	1.7	2.9
<b>U.A.A</b>	<b>55.6</b>	<b>32.7</b>	<b>38.5</b>	<b>50.1</b>	<b>64.4</b>	<b>54.4</b>	<b>46.1</b>
Remainder of Farm	2.4	1.6	1.7	2.6	2.2	3	2
Forage & Crop Acreage	53.9	29.9	36.6	52.2	62.7	52.3	44.4
<b>LIVESTOCK</b>							
<b>Cattle</b>							
Dairy Cows	66.3	0	0	0	0	33	17.6
Other Cows	1.5	23.2	11.1	9.5	5.9	7.3	10.6
Heifers-in-Calf	8.6	1.2	1	0.6	0.4	4.8	3
< 1 Year Old	39.6	19.6	22	8.9	7.2	39.5	23.9
1 - 2 Year Old Male	5.8	2.5	16.4	4.4	8.7	13.7	8.7
1 - 2 Year Old Female	13	4	9	3	4.5	11.5	8
=> 2 Year Old Male	0.7	0.3	6.2	2.1	4	3.3	2.8
=> 2 Year Old Female	1.9	0.8	2.6	0.7	0.8	2.4	1.6
Bulls	1	0.7	0.4	0.5	0.2	0.7	0.6
<b>Total Cattle</b>	<b>137.4</b>	<b>52.3</b>	<b>68.7</b>	<b>29.7</b>	<b>31.6</b>	<b>115.8</b>	<b>76.4</b>
<b>Sheep (avg. no)</b>							
Ewes	1	0.6	9	156.7	27.2	20.8	21.7
Other Sheep	0.8	0.7	8.6	149.4	26.9	21.3	20.8
Total Sheep	1.8	1.3	17.5	306.1	54.1	42.1	42.5
<b>Grazing Livestock Units</b>							
Dairy Cows	66.3	0	0	0	0	33	17.6
Other Cattle	34.8	33.7	44.7	20.1	22	45.2	35.2
Sheep	0.2	0.2	2.4	37.8	7.8	5.4	5.4
Horses	0.2	0	0.2	0.6	0.1	2.1	0.3
<b>Total Livestock Units</b>	<b>101.4</b>	<b>33.9</b>	<b>47.3</b>	<b>58.5</b>	<b>29.9</b>	<b>85.8</b>	<b>58.5</b>
<b>LABOUR UNITS</b>							
Family	1.37	0.98	1.01	1.08	0.97	1.43	1.12
Total	1.57	1	1.04	1.14	1.12	1.61	1.21



**Table - 13C (2011) Gross Output and Direct Payments by System of Farming - Non-Objective One Region**

System	Dairying	Cattle Rearing	Cattle Other	Sheep	Tillage	Mixed Livestock	All Sizes
<b>No. of Farms in Sample</b>	195	86	118	60	57	55	571
<b>Per Cent of Population</b>	11.5	10.9	13.8	4.5	5.3	3.1	49.3
<b>(€) GROSS OUTPUT</b>							
<b>LIVESTOCK</b>							
Dairying	126371	0	0	11	0	60224	33305
of which milk	122693	0	0	0	0	57626	32280
Cattle	26735	19141	26178	11033	12729	32143	22272
of which Suckler Welfare Scheme	2	714	355	223	233	138	313
Sheep & Wool	115	53	1302	18106	3599	2631	2638
of which Sheep Welfare Scheme	8	5	85	1025	143	199	150
Pigs	0	0	0	0	0	2383	153
Poultry	0	0	0	0	0	0	0
Horses	-140	20	24	-57	0	396	-1
Other	0	0	0	0	0	0	0
<b>Sub-Total Livestock</b>	<b>153081</b>	<b>19214</b>	<b>27504</b>	<b>29092</b>	<b>16327</b>	<b>97778</b>	<b>58367</b>
of which Disease Compensation	211	35	22	149	0	1289	160
<b>CROPS</b>							
Wheat	0	0	0	0	24286	0	2811
Barley - Feeding	1001	0	1156	0	22977	1708	3226
Barley - Malting	0	0	0	0	0	0	399
Oats	0	0	0	0	3085	0	376
Potatoes	0	0	0	0	0	0	185
Other	552	547	971	789	9847	1595	1765
of which Forestry Premium	255	388	406	716	317	201	373
<b>Sub-Total Crops</b>	<b>2020</b>	<b>608</b>	<b>2376</b>	<b>1555</b>	<b>65054</b>	<b>4612</b>	<b>8762</b>
<b>TOTAL LIVESTOCK &amp; CROPS</b>	<b>155102</b>	<b>19822</b>	<b>29880</b>	<b>30647</b>	<b>81381</b>	<b>102390</b>	<b>67129</b>
+ Machinery Hire Revenue	107	746	759	56	991	381	540
+ Other Current Receipts	321	273	218	313	638	320	315
+ Decoupled Direct Payments / Subs	22723	12799	18241	19441	27718	23596	19561
of which Single Farm Payment	18247	8779	14915	13252	24983	18008	15468
" REPS	2861	2103	1896	3507	1945	3630	2432
" DAS	1471	1730	1247	2423	337	1865	1456
" Other Subsidies	602	192	268	1295	596	477	473
AEOS	0	92	92	112	84	0	66
+ Income from Land Let	207	259	466	257	497	134	322
+ Income from Quota Let	20	0	0	0	0	74	9
- Inter-Enterprise Transfers	2558	0	565	328	1114	2147	1043
<b>TOTAL GROSS OUTPUT</b>	<b>175952</b>	<b>33897</b>	<b>49007</b>	<b>50302</b>	<b>110166</b>	<b>124834</b>	<b>86847</b>

**Table - 13D (2011) Direct and Overhead Costs by System of Farming - Non-Objective One Region**

System	Dairying	Cattle Rearing	Cattle Other	Sheep	Tillage	Mixed Livestock	All Sizes
<b>No. of Farms in Sample</b>	195	86	118	60	57	55	571
<b>Per Cent of Population</b>	11.5	10.9	13.8	4.5	5.3	3.1	49.3
<b>DIRECT COSTS (€)</b>							
Purchased Concentrates	20443	2327	5130	4545	2515	17023	8502
Purchased Bulky Feed	1841	234	393	646	174	1224	748
Fertiliser	11524	2407	3341	2373	14440	8184	6465
Crop Protection	696	87	294	213	7945	897	1202
Purchased Seed	822	94	232	236	3435	538	706
Hire of Machinery	8065	2328	3036	1759	7824	6018	4643
Transport	165	73	248	72	168	189	161
Livestock (A.I. Vet etc.)	9232	1725	1582	2212	1096	5691	3665
Casual Labour	482	125	162	127	30	686	245
Other	7104	1056	1060	1317	999	4482	2704
<b>Sub-Total</b>	<b>60374</b>	<b>10457</b>	<b>15478</b>	<b>13501</b>	<b>38627</b>	<b>44931</b>	<b>29041</b>
Fodder Crop Adjustment	-631	-271	-348	-105	-301	-670	-390
<b>TOTAL DIRECT COSTS</b>	<b>59741</b>	<b>10185</b>	<b>15129</b>	<b>13392</b>	<b>38321</b>	<b>44259</b>	<b>28649</b>
<b>OVERHEAD COSTS (€)</b>							
Rent of Conacre	3609	806	1516	1039	5328	3880	2367
Car, Electricity, Phone	4359	1644	1614	1470	1771	3156	2363
Current Hired Labour	3974	295	243	806	2797	3043	1632
Interest Charges	3128	341	614	481	998	1539	1228
Machinery Depreciation	6465	1758	2621	2847	6925	6004	4030
Machinery Operating	9678	3137	4319	4169	8437	8967	6036
of which Fuel & Lub	4345	1568	1961	2116	4700	4248	2887
Buildings Depreciation	3728	872	1125	847	898	2786	1732
Buildings Maintenance	1962	531	689	733	855	1940	1053
Land Improvement Depreciation	412	123	155	153	197	253	219
Land Improvement Maintenance	1688	677	854	1121	1046	1777	1114
Lime	558	202	240	260	534	485	355
Other	4978	1978	2449	2608	3693	3836	3172
<b>OVERHEAD COSTS</b>	<b>43982</b>	<b>12161</b>	<b>16199</b>	<b>16275</b>	<b>32944</b>	<b>37182</b>	<b>24945</b>
<b>TOTAL NET EXPENSES</b>	<b>103726</b>	<b>22347</b>	<b>31329</b>	<b>29671</b>	<b>71271</b>	<b>81442</b>	<b>53596</b>
<b>Distribution - % of farms</b>							
<b>Costs % Output</b>	26.3	17.6	15.6	24.9	0	13.7	18.8
50 -< 60	34.1	15.6	23.8	25	33.6	20.5	25.3
60 -< 70	23.9	19.3	22.7	22.2	23.5	23.1	22.3
70 -< 80	9.5	21.7	11.3	20.9	22.7	0	15
80 -< 90	0	0	11.1	0	0	0	7.6
90 +	0	16.4	15.4	0	0	0	10.9
= Total	100	100	100	100	100	100	100
<b>Avg %</b>	<b>58.6</b>	<b>70.4</b>	<b>68.8</b>	<b>62.5</b>	<b>62.7</b>	<b>85.8</b>	<b>66.6</b>





**Table - 14B (2011) Resources per Farm by Region - All Farms**

Region	Reg(1)	Reg(3)	Reg(4)	Reg(5)	Reg(6)	Reg(7)	Reg(8)
<b>No. of Farms in Sample</b>	198	120	131	74	191	176	122
<b>Per Cent of Population</b>	18.3	6.6	9.3	10.9	12.5	15.6	20.4
<b>LAND (ha)</b>							
Area Owned	28	45.7	38.9	41.1	43.5	38.5	28.1
Total Area	34	54.9	44.3	44.7	53.1	45	32.5
Tillage	2.3	9.9	3.4	0.4	9.9	1.3	0.1
of which Total Cereals	1.7	8.6	3	0	8.8	0.8	0
" Potatoes	0.2	0	0	0	0	0	0
Grassland Silage	6.9	10.9	10.7	11.3	11.8	10.6	6.7
Hay	0.8	1.4	1.3	1	1	0.4	0.5
Pasture	18.8	25.7	24.2	25.4	26.4	23.3	18.7
Rough Grazing	2.4	1.9	0.8	3.3	1.5	6.3	4.8
<b>U.A.A</b>	<b>32.7</b>	<b>52.2</b>	<b>42.6</b>	<b>42.7</b>	<b>51.5</b>	<b>43.1</b>	<b>31.2</b>
Remainder of Farm	1.3	2.7	1.7	1.9	1.6	1.9	1.3
Forage & Crop Acreage	31.5	49.7	41.1	39.1	49.9	47.4	27.4
<b>LIVESTOCK</b>							
<b>Cattle</b>							
Dairy Cows	5.9	12.2	8.4	13.8	19.2	22.6	2.9
Other Cows	8.8	12.4	12.1	10.9	12.1	7.9	11.2
Heifers-in-Calf	1.9	2.8	2.7	2.3	3.2	3.4	0.7
< 1 Year Old	14.5	22.8	21.2	24.6	28.6	22	11.9
1 - 2 Year Old Male	5.6	11.4	12.9	8.4	11.2	5.9	3.9
1 - 2 Year Old Female	4.9	9.4	8.2	7.4	8.9	7.3	3.8
=> 2 Year Old Male	1.3	3.7	5.3	3.6	3.1	1.9	2.3
=> 2 Year Old Female	0.9	1.7	1.3	1.5	1.7	1.7	1.4
Bulls	0.4	0.6	0.5	0.6	0.6	0.6	0.4
<b>Total Cattle</b>	<b>44.3</b>	<b>76.9</b>	<b>72.5</b>	<b>72.9</b>	<b>88.2</b>	<b>73.1</b>	<b>38.5</b>
<b>Sheep (avg. no)</b>							
Ewes	24.7	41.5	11.4	4.5	25.2	21.4	28.6
Other Sheep	24.8	36.3	13.2	4.1	25.4	20.7	26.2
<b>Total Sheep</b>	<b>49.6</b>	<b>77.8</b>	<b>24.6</b>	<b>8.6</b>	<b>50.6</b>	<b>42</b>	<b>54.8</b>
<b>Grazing Livestock Units</b>							
Dairy Cows	5.9	12.2	8.4	13.8	19.2	22.6	2.9
Other Cattle	23.7	40.6	41	35.4	40.9	29.2	23.5
Sheep	6.2	10.1	3.2	1.2	7	4.6	6.9
Horses	0.2	0.3	0.6	0.3	0.2	0.1	0.3
<b>Total Livestock Units</b>	<b>36</b>	<b>63.2</b>	<b>53.2</b>	<b>50.6</b>	<b>67.3</b>	<b>56.5</b>	<b>33.7</b>
<b>LABOUR UNITS</b>							
Family	1.07	0.98	1	1.2	1.08	1.2	0.91
<b>Total</b>	<b>1.12</b>	<b>1.09</b>	<b>1.08</b>	<b>1.27</b>	<b>1.21</b>	<b>1.28</b>	<b>0.92</b>

**Table - 14C (2011) Gross Output and Direct Payments by Region - All Farms**

Region	Reg(1)	Reg(3)	Reg(4)	Reg(5)	Reg(6)	Reg(7)	Reg(8)
<b>No. of Farms in Sample</b>	198	120	131	74	191	176	122
<b>Per Cent of Population</b>	18.3	6.6	9.3	10.9	12.5	15.6	20.4
<b>(€) GROSS OUTPUT</b>							
<b>LIVESTOCK</b>							
Dairying	10198	25936	15731	26117	34938	42315	5434
of which milk	9918	25225	15063	24865	33817	41183	5295
Cattle	15319	23114	25796	21417	27715	18900	12937
of which Suckler Welfare Scheme	245	374	310	318	395	200	334
Sheep & Wool	3374	5370	1854	659	3497	1526	3732
of which Sheep Welfare Scheme	170	273	93	45	148	161	201
Pigs	0	0	500	0	0	461	0
Poultry	1	0	0	0	0	0	0
Horses	-1	19	-29	39	80	-136	22
Other	0	0	0	0	0	0	0
<b>Sub-Total Livestock</b>	<b>28892</b>	<b>54440</b>	<b>43853</b>	<b>48232</b>	<b>66229</b>	<b>63066</b>	<b>22125</b>
of which Disease Compensation	37	176	105	108	47	250	18
<b>CROPS</b>							
Wheat	884	5322	0	0	4916	0	0
Barley - Feeding	1069	5108	2113	0	5316	734	16
Barley - Malting	0	0	0	0	0	0	0
Oats	481	0	0	0	372	0	13
Potatoes	928	0	0	0	0	0	186
Other	1037	2465	1547	881	2243	1008	224
of which Forestry Premium	236	445	290	519	252	410	135
<b>Sub-Total Crops</b>	<b>4399</b>	<b>14573</b>	<b>5160</b>	<b>1249</b>	<b>14675</b>	<b>2045</b>	<b>439</b>
<b>TOTAL LIVESTOCK &amp; CROPS</b>	<b>33290</b>	<b>69013</b>	<b>49013</b>	<b>49481</b>	<b>80905</b>	<b>65111</b>	<b>22563</b>
+ Machinery Hire Revenue	147	733	816	1135	517	299	0
+ Other Current Receipts	68	554	139	196	518	107	75
+ Decoupled Direct Payments / Subs	13266	21325	19506	18027	23386	17279	12613
of which Single Farm Payment	9192	17456	14570	13199	19635	12613	8321
" REPS	1577	2451	2685	2876	2516	2403	1595
" DAS	2327	1180	1987	1831	1048	1986	2364
" Other Subsidies	380	594	417	278	454	602	541
AEOS	93	4	111	63	109	36	275
+ Income from Land Let	168	497	275	368	306	241	0
+ Income from Quota Let	15	4	20	0	16	4	5
- Inter-Enterprise Transfers	468	1207	835	493	1476	889	97
<b>TOTAL GROSS OUTPUT</b>	<b>46432</b>	<b>90934</b>	<b>69209</b>	<b>68919</b>	<b>104229</b>	<b>82116</b>	<b>34884</b>

**Table - 14D (2011) Direct and Overhead Costs by Region - All Farms**

Region	Reg(1)	Reg(3)	Reg(4)	Reg(5)	Reg(6)	Reg(7)	Reg(8)
<b>No. of Farms in Sample</b>	198	120	131	74	191	176	122
<b>Per Cent of Population</b>	18.3	6.6	9.3	10.9	12.5	15.6	20.4
<b>DIRECT COSTS (€)</b>							
Purchased Concentrates	6251	8629	7463	7000	9022	9374	3686
Purchased Bulky Feed	351	865	808	638	814	665	497
Fertiliser	2952	7363	4687	4276	8364	5345	2169
Crop Protection	522	1853	701	265	2087	365	96
Purchased Seed	311	951	403	226	1116	366	123
Hire of Machinery	2262	4592	3536	3770	5484	4079	2230
Transport	241	244	207	126	115	170	76
Livestock (A.I. Vet etc.)	1741	3536	2738	2834	4101	3971	1790
Casual Labour	98	191	82	74	320	352	117
Other	1181	2855	2027	2124	3065	2545	953
<b>Sub-Total</b>	<b>15911</b>	<b>31080</b>	<b>22651</b>	<b>21334</b>	<b>34487</b>	<b>27232</b>	<b>11736</b>
Fodder Crop Adjustment	-134	-472	-650	-403	-541	-102	-263
<b>TOTAL DIRECT COSTS</b>	<b>15777</b>	<b>30607</b>	<b>22001</b>	<b>20931</b>	<b>33942</b>	<b>27128</b>	<b>11451</b>
<b>OVERHEAD COSTS (€)</b>							
Rent of Conacre	1727	3109	1782	1075	3116	1725	763
Car, Electricity, Phone	1757	2252	1936	2101	2562	2512	1732
Current Hired Labour	822	2571	1705	948	2266	996	87
Interest Charges	656	1384	1060	946	1634	1012	359
Machinery Depreciation	2955	5295	4003	3665	4600	2864	1660
Machinery Operating	4094	6921	5752	4787	6790	5877	1963
of which Fuel & Lub	2039	3633	3067	2409	3507	2286	1035
Buildings Depreciation	1059	1926	1456	1540	1813	1728	564
Buildings Maintenance	685	1135	1008	969	1334	868	608
Land Improvement Depreciation	127	261	239	229	232	188	79
Land Improvement Maintenance	892	1213	1157	922	1467	965	561
Lime	123	364	120	213	548	278	90
Other	1841	3510	2739	2857	3810	2635	1323
<b>OVERHEAD COSTS</b>	<b>16615</b>	<b>29576</b>	<b>22837</b>	<b>20039</b>	<b>29624</b>	<b>21371</b>	<b>9698</b>
<b>TOTAL NET EXPENSES</b>	<b>32392</b>	<b>60183</b>	<b>44838</b>	<b>40969</b>	<b>63570</b>	<b>48501</b>	<b>21172</b>
<b>Distribution - % of farms</b>							
<b>Costs % Output</b>	12.5	11.8	15.8	26.2	17	22.7	27
50 -< 60	15.6	19.1	20	23.3	30.4	27.1	20.3
60 -< 70	18.5	31.3	25.9	10.9	23	20.8	19.4
70 -< 80	25.7	19.7	21.9	15.1	17.2	8.5	12.7
80 -< 90	13.9	8.7	0	0	4.6	8.7	9.7
90 +	13.4	0	0	0	0	12.3	10.9
= Total	100	100	100	100	100	100	100
<b>Avg %</b>	<b>72.2</b>	<b>70.6</b>	<b>66</b>	<b>65.8</b>	<b>64.7</b>	<b>64.3</b>	<b>63.7</b>







**Table - 15B (2010) Resources per Farm by System of Farming - All Farms**

System	Dairying	Cattle Rearing	Cattle Other	Sheep	Tillage	Mixed Livestock	All Sizes
<b>No. of Farms in Sample</b>	253	188	291	139	99	94	1064
<b>Per Cent of Population</b>	15.2	21.3	32.6	16.8	8.1	5.6	99.8
<b>LAND (ha)</b>							
Area Owned	45.1	29.1	31.0	36.6	49.8	39.2	35.7
Total Area	57.7	33.0	34.1	42.0	64.2	49.4	42.1
Tillage	2.5	0.2	0.7	0.6	38.4	2.5	4.0
of which Total Cereals	1.2	0.0	0.5	0.4	32.9	1.7	3.2
" Potatoes	0.0	0.0	0.0	0.0	1.4	0.1	0.1
Grassland Silage	17.7	6.7	7.4	4.9	4.9	12.7	8.5
Hay	0.4	0.8	0.8	1.0	2.2	0.8	0.9
Pasture	32.0	19.0	20.5	23.0	13.2	27.7	22.2
Rough Grazing	1.8	3.5	1.9	9.1	0.6	2.3	3.4
<b>U.A.A</b>	<b>55.0</b>	<b>31.6</b>	<b>32.4</b>	<b>40.2</b>	<b>61.4</b>	<b>47.0</b>	<b>40.2</b>
Remainder of Farm	2.7	1.4	1.7	1.8	2.8	2.4	1.9
Forage & Crop Acreage	53.2	28.2	30.8	43.0	59.9	44.7	38.9
<b>LIVESTOCK</b>							
<b>Cattle</b>							
Dairy Cows	64.4	0.0	0.0	0.0	0.0	27.4	11.4
Other Cows	1.3	20.2	9.3	7.0	6.4	5.8	9.6
Heifers-in-Calf	8.7	1.2	0.8	0.5	0.4	3.9	2.2
< 1 Year Old	37.5	16.5	15.3	7.0	8.0	32.3	17.9
1 - 2 Year Old Male	6.3	2.3	13.0	3.7	8.3	12.7	7.7
1 - 2 Year Old Female	12.5	3.7	7.0	3.2	5.1	11.4	6.6
=> 2 Year Old Male	0.7	0.2	5.9	1.5	4.9	2.8	2.9
=> 2 Year Old Female	1.9	0.8	1.8	0.7	1.1	2.1	1.4
Bulls	1.0	0.7	0.3	0.3	0.3	0.7	0.5
<b>Total Cattle</b>	<b>133.5</b>	<b>45.5</b>	<b>53.5</b>	<b>23.7</b>	<b>34.6</b>	<b>98.6</b>	<b>60.0</b>
<b>Sheep (avg. no)</b>							
Ewes	2.2	2.2	8.3	120.7	25.5	21.2	27.1
Other Sheep	2.1	2.2	7.9	101.8	24.9	19.9	23.7
<b>Total Sheep</b>	<b>4.2</b>	<b>4.4</b>	<b>16.2</b>	<b>222.5</b>	<b>50.4</b>	<b>41.0</b>	<b>50.9</b>
<b>Grazing Livestock Units</b>							
Dairy Cows	64.4	0.0	0.0	0.0	0.0	27.4	11.4
Other Cattle	34.3	29.6	35.9	15.9	24.3	39.8	30.2
Sheep	0.5	0.6	2.2	27.8	6.8	5.1	6.5
Horses	0.1	0.1	0.3	0.4	0.2	1.9	0.3
<b>Total Livestock Units</b>	<b>99.4</b>	<b>30.3</b>	<b>38.4</b>	<b>44.2</b>	<b>31.3</b>	<b>74.2</b>	<b>48.4</b>
<b>LABOUR UNITS</b>							
Family	1.41	0.94	0.95	1.01	0.95	1.36	1.05
<b>Total</b>	<b>1.63</b>	<b>0.96</b>	<b>0.97</b>	<b>1.04</b>	<b>1.12</b>	<b>1.48</b>	<b>1.12</b>

**Table - 15C (2010) Gross Output and Direct Payments by System of Farming - All Farms**

System	Dairying	Cattle Rearing	Cattle Other	Sheep	Tillage	Mixed Livestock	All Sizes
<b>No. of Farms in Sample</b>	253	188	291	139	99	94	1064
<b>Per Cent of Population</b>	15.2	21.3	32.6	16.8	8.1	5.6	99.8
<b>(€) GROSS OUTPUT</b>							
<b>LIVESTOCK</b>							
Dairying	105178	2	15	0	19	40835	18350
of which milk	103402	0	0	0	0	39216	17981
Cattle	23135	13230	16244	7377	11716	21828	15101
of which Suckler Welfare Scheme	7	685	281	249	127	122	299
Sheep & Wool	307	306	1095	11113	2843	2837	2738
Pigs	13	13	46	538	124	134	128
Poultry	0	0	0	34	0	1841	110
Horses	0	0	0	4	0	0	1
Other	206	-9	-40	34	-31	-126	13
<b>Sub-Total Livestock</b>	<b>128826</b>	<b>13529</b>	<b>17314</b>	<b>18562</b>	<b>14547</b>	<b>67216</b>	<b>36313</b>
of which Disease Compensation	591	38	44	94	13	316	148
<b>CROPS</b>							
Wheat	301	0	30	0	16869	347	1447
Barley - Feeding	738	21	444	357	19397	1379	1978
Barley - Malting	197	0	10	0	1874	0	186
Oats	76	3	0	74	2852	21	258
Potatoes	0	0	4	11	9864	443	830
Other	500	508	889	823	10445	1046	1523
of which Forestry Premium	234	423	312	488	327	249	351
<b>Sub-Total Crops</b>	<b>1813</b>	<b>533</b>	<b>1377</b>	<b>1265</b>	<b>61315</b>	<b>3236</b>	<b>6223</b>
<b>TOTAL LIVESTOCK &amp; CROPS</b>	<b>130639</b>	<b>14062</b>	<b>18691</b>	<b>19827</b>	<b>75862</b>	<b>70451</b>	<b>42535</b>
+ Machinery Hire Revenue	364	368	365	79	2206	303	463
+ Other Current Receipts	380	40	118	147	679	232	198
+ Decoupled Direct Payments / Subs	22259	12752	15053	17267	27099	19017	17236
of which Single Farm Payment	17473	8027	11189	10188	23078	14624	12462
" REPS	3050	2576	2123	4468	3419	2471	2882
" DAS	1707	2111	1669	2403	466	1887	1808
" Other Subsidies	603	53	133	746	265	597	328
+ Income from Land Let	114	136	303	47	813	137	227
+ Income from Quota Let	9	0	5	0	0	12	4
- Inter-Enterprise Transfers	2482	12	232	115	1856	1607	718
<b>TOTAL GROSS OUTPUT</b>	<b>151337</b>	<b>27398</b>	<b>34332</b>	<b>37271</b>	<b>105176</b>	<b>88576</b>	<b>60010</b>

**Table - 15D (2010) Direct and Overhead Costs by System of Farming - All Farms**

System	Dairying	Cattle Rearing	Cattle Other	Sheep	Tillage	Mixed Livestock	All Sizes
<b>No. of Farms in Sample</b>	253	188	291	139	99	94	1064
<b>Per Cent of Population</b>	15.2	21.3	32.6	16.8	8.1	5.6	99.8
<b>DIRECT COSTS (€)</b>							
Purchased Concentrates	20222	2481	4144	4197	2472	14809	6716
Purchased Bulky Feed	2207	430	622	481	357	1171	808
Fertiliser	9088	1970	2275	1768	10317	5328	3989
Crop Protection	568	92	178	160	7203	543	808
Purchased Seed	669	81	136	131	3462	398	490
Hire of Machinery	7261	1999	2397	1516	6895	4417	3385
Transport	539	30	186	61	101	305	185
Livestock (A.I. Vet etc.)	8334	1440	1334	1633	1057	4124	2609
Casual Labour	475	7	34	70	254	303	135
Other	6207	758	765	891	1315	3206	1797
<b>Sub-Total</b>	<b>55570</b>	<b>9287</b>	<b>12072</b>	<b>10907</b>	<b>33434</b>	<b>34604</b>	<b>20923</b>
Fodder Crop Adjustment	-359	-106	-32	40	139	-90	-75
<b>TOTAL DIRECT COSTS</b>	<b>55211</b>	<b>9181</b>	<b>12040</b>	<b>10950</b>	<b>33580</b>	<b>34514</b>	<b>20849</b>
<b>OVERHEAD COSTS (€)</b>							
Rent of Conacre	3894	783	917	1042	5397	3310	1863
Car, Electricity, Phone	4268	1458	1428	1432	1733	2910	1977
Current Hired Labour	4276	191	366	488	3378	1985	1282
Interest Charges	3250	399	556	360	1681	1263	1031
Machinery Depreciation	6157	1665	2000	2041	6920	4034	3084
Machinery Operating	9313	2490	3023	2802	9058	6175	4500
of which Leasing	3860	1238	1361	1347	4476	2790	2048
Buildings Depreciation	5835	1335	1548	1403	1718	3051	2230
Buildings Maintenance	1695	470	535	565	852	1460	781
Land Improvement Depreciation	658	178	187	171	242	345	267
Land Improvement Maintenance	1710	687	722	788	1027	1192	928
Lime	516	130	118	102	274	394	207
Other	4719	1498	1864	1753	3698	3219	2428
<b>OVERHEAD COSTS</b>	<b>45773</b>	<b>11154</b>	<b>13149</b>	<b>12847</b>	<b>35705</b>	<b>28945</b>	<b>20372</b>
<b>TOTAL NET EXPENSES</b>	<b>100984</b>	<b>20336</b>	<b>25189</b>	<b>23794</b>	<b>69278</b>	<b>63459</b>	<b>41220</b>
<b>Distribution - % of farms</b>							
<b>Costs % Output</b>	10.8	11.2	13.8	24.8	19.7	7.4	14.8
50 -< 60	20.7	16.1	13.0	16.1	21.1	12.7	16.0
60 -< 70	30.1	14.5	19.2	21.5	25.4	24.2	21.0
70 -< 80	22.7	17.8	13.5	17.5	23.2	29.8	18.2
80 -< 90	10.8	11.3	14.7	7.3	2.5	7.9	10.8
90 +	4.9	29.0	25.7	12.8	8.0	18.1	19.2
= Total	100.0	100.0	100.0	100.0	100.0	100.0	100.0
<b>Avg %</b>	<b>66.7</b>	<b>78.4</b>	<b>77.6</b>	<b>67.7</b>	<b>64.6</b>	<b>74.7</b>	<b>73.2</b>

**Table - 15E (2010) Demographic Data by System of Farming - All Farms**

System	Dairying	Cattle Rearing	Cattle Other	Sheep	Tillage	Mixed Livestock	All Sizes
<b>No. of Farms in Sample</b>	253	188	291	139	99	94	1064
<b>Per Cent of Population</b>	15.2	21.3	32.6	16.8	8.1	5.6	99.8
<b>Holder</b>							
Age of Holder	49.1	54.1	56.8	57.2	53.5	56.6	54.8
Marital Status - Married %	82.7	69.1	68.0	71.1	69.9	79.4	71.8
Widowed %	0.6	3.8	3.9	2.6	4.7	2.5	3.1
Single %	15.6	25.9	25.6	25.4	24.2	16.5	23.5
Separated %	0.0	1.2	1.7	1.0	0.6	1.1	1.1
= Total	100.0	100.0	100.0	100.0	100.0	100.0	100.0
<b>Household</b>							
Household Size (no.)	3.7	3.0	2.7	2.9	2.9	3.1	3.0
< 24 (no.)	1.4	0.9	0.7	0.9	0.9	1.0	0.9
< 24 % HH	59.7	40.2	37.0	44.0	36.3	49.4	43.0
25 - 44 (no.)	0.7	0.6	0.4	0.4	0.6	0.4	0.5
25 - 44 % HH	45.4	38.0	27.1	30.7	41.8	35.5	34.5
Demograph. Viable % HH	84.3	69.4	60.6	63.8	70.9	74.2	68.2
<b>Off-farm sources of income --</b>							
Off-farm Job % HH	48.8	54.6	54.4	48.9	52.2	35.2	51.4
Off-farm Job Holder % HH	10.5	38.7	41.4	34.4	33.3	7.1	32.3
Off-farm Job Spouse % HH	43.7	32.4	29.6	30.6	27.9	30.4	32.4
Pensioners (no.)	0.1	0.3	0.4	0.4	0.3	0.4	0.3
Pensioners % HH	7.2	24.6	25.6	32.1	21.3	27.1	23.4
Unemployment Etc. (no.)	0.1	0.2	0.1	0.2	0.0	0.1	0.1
Unemployment Etc. % HH	4.6	17.6	11.4	13.5	4.3	14.0	11.6
<b>Distribution - % of farms</b>							
F.F.I. (€) < 5000	5.00	51.00	45.00	26.00	9.00	19.00	33.00
FFI 5000 - 10000	3.00	22.00	23.00	20.00	17.00	21.00	19.00
FFI 10000 - 20000	12.00	20.00	18.00	30.00	24.00	19.00	20.00
FFI 20000 - 30000	15.00	5.00	7.00	14.00	9.00	12.00	10.00
FFI 30000 - 50000	21.00	1.00	5.00	8.00	19.00	12.00	9.00
FFI 50000 - 70000	18.00	1.00	1.00	1.00	12.00	7.00	5.00
FFI70TO100000	16.00	0.00	0.00	1.00	5.00	6.00	3.00
>100000	10.00	0.00	0.00	0.00	5.00	3.00	2.00

## APPENDIX B

### 2011 NFS SAMPLE

In this report, the 2011 NFS population is based on the 2010 Census of Agriculture, as conducted by the CSO and was used to estimate the distribution of the farm population for the major systems and sizes of farms. The 2010 Census recorded the population of farms at 139,829. When pigs, poultry and farms with a Standard Output of less than €4,000 are excluded 105,535 farms are represented by the NFS in 2011.

#### The Farm Population for the 2011 NFS Sample

In Appendix C, the new methodology for classifying farms into the major farming systems according to the EU farm typology is set out. This typology is used in EU Farm Structure Surveys, agricultural censuses and in the NFS. It is a requirement that the standard output (SO) be updated regularly so as to take account of the changing value of money over time. Thus, the most recently up-dated SO 2007 were used in calculating the 2011 NFS results.

The estimated farm population distribution used to produce the 2011 NFS report is shown in Table A.

**Table A: Estimated 2011 Farm Population Distribution**

Size (ha)	<10	10-20	20-30	30-50	50-1 00	>100	Total
<b>% of Farms</b>							
Dairying	0.05	0.72	1.74	5.15	6.04	1.07	14.77
Cattle Rearing	1.04	6.44	7.63	7.51	2.60	0.25	25.47
Cattle Other	2.59	9.02	6.81	8.29	4.90	0.86	32.48
Sheep	1.53	3.29	2.83	3.63	2.35	0.81	14.43
Tillage	0.49	0.91	1.04	1.76	1.99	1.00	7.19
Mixed Livestock	0.39	0.96	0.85	1.47	1.54	0.44	5.65
All Systems	6.09	21.34	20.90	27.82	19.42	4.43	100.00

Source: CSO

## 2011 Sample

The distribution of the sample numbers on which the 2011 results are based is shown in Table B together with the rate of representation for each system/size cell. The **1022** farms in the NFS sample represent a farming population of **105,535** farms.

**Table B: Sample Numbers for 2011 Results (and Representation)<sup>1</sup>**

Size (ha)	<10	10-20	20-30	30-50	50-100	>100	Total
Dairying	2 (28)	8 (95)	22 (84)	79 (69)	116 (55)	28 (40)	255 (61)
Cattle Rearing	2 (546)	25 (272)	47 (171)	77 (103)	35 (78)	7 (38)	193 (139)
Cattle Other	5 (546)	35 (272)	42 (171)	85 (103)	66 (78)	24 (38)	257 (133)
Sheep	4 (402)	21 (165)	21 (142)	30 (128)	38 (65)	13 (66)	127 (120)
Tillage	1 (520)	3 (320)	7 (156)	21 (88)	47 (45)	23 (46)	102 (74)
Mixed Livestock	2 (207)	2 (506)	3 (300)	21 (74)	40 (41)	20 (23)	88 (68)
Total Sample	16 (401)	94 (239)	142 (155)	313 (94)	342 (60)	115 (41)	1022 (103)

*Representation is the number of farms in the population represented by one participating farm and is rounded to nearest digit in Table B.*

It should be noted that as the representation of some cells is very small this should be taken into consideration in the interpretation of the results.

## APPENDIX C

### FARMING SYSTEMS AND THEIR CLASSIFICATION

In the European Union, there is a wide diversity of the production structures and systems. To make it easier to analyse the structural characteristics and economic results of the agricultural holdings, an appropriate community classification of the agricultural holdings per type of farming and economic size class has been developed.

Since 1985, the typology of the agricultural holdings was based on standard gross margins (SGM) calculated taking into account the gross output and the subsidies, as well as certain deductible specific costs. In the meantime the common agricultural policy has drastically changed and the majority of the direct payments have been decoupled. Due to this decoupling of direct payments since 2005, it was not possible to maintain the previous typology (Commission decision 85/377/EEC) based on SGM. A SGM without subsidies could be negative and therefore can not be used as classification criteria. Therefore, a new typology has been established.

**The Community typology of agricultural holdings** is a uniform classification of holdings in the European Union. For practical reasons, the classification of farms cannot be based on financial information recorded individually for each holding. Therefore, the classification is based on a set of economical coefficients calculated as regional averages, the SO coefficients, and on the structural information (areas and numbers of heads) collected in the Farm Structure Survey (FSS) and in the Farm Accountancy Data Network (FADN).

Classification of holdings is based on their type of farming and economic size. The determining of these two elements is based on the SO of the various types of agricultural production. In addition holdings can be classified also according to the importance of the OGA of the holding. The typology is arranged in a way that homogeneous groups of holdings can be assembled in a greater or lesser degree of aggregation. The definitions are as follows:

- a) The "**standard output**" (SO), of an agricultural product (crop or livestock) is the average monetary value of the agricultural output at farm-gate price. The SO excludes direct payments, value added tax and taxes on products. The Member States calculate regional SO coefficients for each product as average values over the reference period.
- b) The "**economic size of a holding**" is the value of its **total SO**. It is the sum of the individual SO of all the agricultural products present on the holding, expressed in Euro. Since Commission Regulation (EC) No 1242/2008 of 8 December 2008 there are 14 economic size classes.



c) The "**type of farming of a holding**" is the production system of a holding which is characterised by the relative contribution of different enterprises<sup>1</sup> to the holding's total SO. Depending on the amount of detail required, there are three nested levels of type of farming: 9 *general types*, 21 *principal types* and 62 *particular types*.

d) The "**importance of the OGA of the holding**" is defined as the share of the OGA turnover in the total turnover of the holding (including direct payments). Depending on this estimated OGA share, the farms are classified according to three percentage bands (from 0 to 10%, from 10% to 50%, more than 50%).

The method of classifying farms into farming systems, as used in this report is based on the EU farm typology as set out in Commission Decision 78/463 and its subsequent amendments. The methodology assigns a standard output (SO) to each type of farm animal and each hectare of crop. Farms are then classified into groups called particular types and principal types, according to the proportion of the total SO of the farm which comes from the main enterprises after which the systems are named. For the purposes of adapting the EU typology to suit Irish conditions more closely, a re-grouping of the farm types has been carried out as set out below (showing the EU description):

The Standard Output methodology only allows for one cattle system – particular type 460 – specialist cattle – rearing and fattening combined. In light of the Irish situation where weanling production comprises a large cohort of the farming population a re classification of cattle farms has been carried out. Where more than 50% of the SO is attributable to the Suckler Herd the farm is classified as Cattle Rearing.

The system titles refer to the **dominant** enterprise in each group and their results should not be confused with those of individual farm enterprises. For example, the two specified cattle systems refer to those farms where the greater proportion of their activity is cattle production, but there are many other farms (including those in the tillage and other systems) that have a cattle enterprise. This can be seen clearly in the main tables section of this report showing the contribution of the enterprises to the gross output of farms in the various systems.

- **Dairying**

Particular type 450 (**specialist** milk production)

- **Cattle Rearing**

Particular types 460 (specialist cattle –rearing and fattening) – Where greater than or equal to 50% of the SO is from suckler cows

- **Cattle Other**

Particular types 460 (specialist cattle –rearing and fattening) – where less than 50% of the SO is from suckler cows

- **Sheep \***

Particular types 481 (specialist sheep) and **482** (sheep and **cattle\*** combined)

- **Tillage**

Particular types 151 (Specialist cereals (other than rice), oilseeds and protein crops), 833 (Field crops combined with non-dairying grazing livestock), 834 (Non-dairying grazing livestock combined with field crops), 161 (Specialist root crops) and 166 (Various field crops combined)

- **Mixed Livestock \***

Particular types 470 (Cattle – dairying, rearing and fattening combined), 484 (Various grazing livestock), 731 (Mixed livestock, **mainly dairying**), 844 (Various **mixed crops\***and livestock), 832 (**Dairying\***combined with **field crops\*** and 842 (**Permanent crops\***and grazing livestock combined)

## **GLOSSARY OF TERMS**

**AEOS - Agri-Environment Options Scheme** Introduced in implementation of Council Regulation (EC) no.1698/2005, this scheme is jointly funded by the European Union and National Exchequer. The objectives of AEOS are to meet the challenges of conserving and promoting biodiversity, encouraging water management and water quality measures and combating climate change

### **Asset Values**

- **Livestock** The average of the opening and closing inventories.
  
- **Machinery** Closing inventory value based on cost of replacement.
  
- **Land and Buildings** Market value of the farm as estimated by the farmer
  
- **Loans Closing Balance** The level of outstanding farm borrowing at the end of the year.

**Area Owned** The total map area of land owned. It does not include area under commonage rights.

**Cash Flow** Cash flow is defined as cash income minus net new investment. It does not include changes in borrowing.

**Cash Income** Net sales and receipts minus current cash expenditure. It is the approximate cash element of family farm income.

**Current Cash Expenditure** Expenditure on all current farm inputs, whether direct or overhead; excludes depreciation.

**DAS** Disadvantaged Area Scheme on a land area basis in Disadvantaged Areas only.

**Demographically Viable % HH** Percentage of farm households which have at least one member below 45 years of age

**Depreciation** Calculated at replacement cost declining balance method at 10% for machinery and 5% for buildings. The 1989 NFS report contains additional details on the methodology.

The Capital Goods Price Index Building and Construction (i.e. Wages and Material), as published by the CSO, is used in the calculation of building depreciation in 2004 NFS Report. In 2004 the CSO discontinued the Agricultural Buildings Price Index (used by the National Farm Survey in calculating building depreciation since 1985) and replaced it with the Capital Goods Price Index, Buildings and Construction. This new index was used in calculating building depreciation from 2004 onwards and is updated annually. Also from 2004 onwards buildings and machinery, exceeding 25 and 20 years respectively, have been written off on an annual basis.

**Direct Costs:** Costs directly incurred in the production of a particular enterprise, e.g., fertilisers, seeds and feeding stuffs; most items are detailed in the main tables. See (d) section of tables for greater detail.

**Direct Subsidies/Payments:** Non capital payments made to farmers under one or more of the CAP Schemes. These are shown in greater detail in the (c) section of the tables.

**Economically Sustainable:** Farm is not economically viable (refer to definition below) but farmer and/or spouse has an off-farm job.

**Economically Viable:** Family farm income is sufficient to cover family labour (remunerated at the agricultural wage rate) and provide a 5% return on non-land assets.

### **Economically Vulnerable**

Farm is not viable and neither farmer nor spouse has an off-farm job

**ESU** As an alternative to farm size measured by surface area (map area) the size of the farm business is measured in European Size Units (ESU), where 1 ESU = 1,200 Euro of Standard Gross Margin.

**Family Farm Income** Gross output less total net expenses; it represents the total return to the family labour, management and capital investment in the farm business.

**Fodder Crop Adjustment** The difference in value of the opening and closing inventories of fodder crops, valued at their direct costs of production. This accounting procedure allows the cost of fodder crops to be included in the year in which they were consumed, which is not necessarily the year in which they were produced.

**Forage and Crop Area** The total adjusted area under grass (including rough grazing) and crops, plus adjusted commonage area.

**Frequencies of Farms (%)** Frequency distribution tables are given for gross output, soil groups, costs as a per cent of output and for family farm income. These tables show the estimated per cent of farms in the population having various levels of the variables.

**Full-Time Farm** A farm which requires at least 0.75 standard labour units to operate, as calculated on a standard man day basis.

**Grassland** Sum of areas under silage, hay and pasture, of which:

**Silage** - Basic area of ground cut at least once for silage (no adjustments are made for land cut more than once or for grazing).

**Hay** - Basic area of ground cut at least once for hay (no adjustments are made for land cut more than once or for grazing).

**Grazing Livestock Unit (LU)** A dairy cow is taken as the basic grazing livestock unit. All other grazing stock are given equivalents as follows:

<b>Cattle</b>	Dairy cows	1.0	
	Suckling cows	0.9	
	Heifers-in-calf	0.7	
	Calves under 6 mths.	0.2	
	Calves 6-12 months	0.4	
	Cattle 1-2 years	0.7	
	Cattle over 2 years	1.0	
	Stock bulls	1.0	
<b>Sheep</b>		<i>Lowland</i>	<i>Hill</i>
	Ewes and rams	0.20	0.14
	Lambs to weaning	0.00	0.00
	Lambs after-weaning	0.12	0.10
	Hoggets and wethers	0.15	0.10
<b>Horses</b>	Working horses	1.5	
	Others	1.0	
<b>Deer</b>		>1yr	<1yr
	Red	0.25	0.12
	Fallow	0.13	0.07
	Sika	0.08	0.04
<b>Goats (All)</b>		0.14	

**Gross Margin** Gross output minus direct costs.

**Gross Output:** Gross output for the farm is defined as total sales less purchases of livestock, plus value of farm produce used in the house, plus receipts for hire work, services, fees etc. It also includes net change in inventory, which in the case of cows, cattle and sheep is calculated as the change in numbers valued at closing inventory prices.

All non-capital grants, subsidies, premiums, headage payments etc., are included in gross output in this report. They are allocated to the enterprise in the year in which they are paid (see also “Grants and subsidies”). In this report Gross Output also includes income from land and quota let.

**Hill Farms** Hill farms are defined as those located in areas where the predominant soil type is either Class 5 or 6 (see Soil Group).

**Household Size** Number of people in the farm household, including children, pensioners and family members not involved in farming.

**Inter-Enterprise Transfers** This item is an adjustment to the sum of the gross outputs from the individual farm enterprises, where the output of one enterprise is used as an input to another on the same farm, e.g., milk fed to calves, or home grown barley fed to farm animals. It is merely an accounting device to avoid double counting in the calculation of the total gross output and direct costs of the farm.

**Labour Costs** For farm accountancy purposes the costs of casual labour are included in direct costs while regular labour is included in overhead costs.

**Labour Unit** (a) One labour unit is defined as at least 1800 hours worked on the farm by a person over 18 years of age. Persons under 18 years of age are given the following labour unit equivalents:

16-18 years: 0.75

14-16 years: 0.50

Note: An individual cannot exceed one labour unit even if he/she works more than 1800 hours on the farm.

**Land/Quota Let:** Receipts from land or quota let during the year.

**Net New Investment** All capital expenditure during the year less capital sales and grants. The cost of major repairs to farm buildings, plant and machinery as well as land improvements is also included. It does not include investments in land purchases.

**Net Sales and Receipts** Sales of animals and crops, plus non-capital grants and direct payments, less purchases of livestock.

**Non-Objective One Region** Includes the counties: Kildare, Meath, Wicklow, Dublin, Clare, Limerick, Tipperary N.R., Tipperary S.R., Carlow, Kilkenny, Wexford, Waterford, Cork and Kerry.

**Objective One Region** Includes the counties: Louth, Leitrim, Sligo, Cavan, Donegal, Monaghan, Laois, Longford, Offaly, Westmeath, Galway, Mayo and Roscommon i.e. the Border, Midlands and Western Regions.

**Off-Farm Job % HH** Percentage of households where the holder and/or spouse have an off-farm job.

**Other Direct Costs** These include miscellaneous costs for crops e.g. polythene, baler twine, crop insurance; miscellaneous costs for livestock, e.g., mart commission, straw for bedding, super levy payments, farming organisation levies, Irish Dairy Board levy, research levies, disease eradication levies, bulk tank rental, detergents, etc.

**Other Overhead Costs** Miscellaneous costs such as purchase of small tools, bank charges, subscriptions, postage, fire insurance, slurry, land annuities, depreciation of permanent crops, accountancy charges, advisory charges, water rates, protective clothing, etc.

**Overhead Costs** Costs which cannot be directly allocated to a specific farm enterprise; sometimes referred to as fixed costs. Most items are detailed in the main tables. See (d) section of tables for greater detail.

**Part-Time Farm** A farm which requires less than 0.75 standard labour units to operate, as calculated on a standard man day basis.



**Pensioner's % HH** Percentage of households where the holder and/or spouse are in receipt of a pension of any kind.

**Per Cent of Population** These figures are estimates of the percentage of the population (of farms) that fall into individual categories. For example in Table 01a 0.6% of the population (of farms) are estimated to be Dairying farms with less than 10 UAA (Ha).

**Remainder of Farm** Land covered by woods, areas not in agricultural use for economic, social or other reasons but which could be so used. It also includes ground covered by paths, roads, buildings or land which cannot be farmed, e.g., quarries, barren land, swamps, areas under water, etc.

**REPS** Rural Environmental Protection Scheme. This latest REPS scheme REPS 4 which was introduced in August 2007 was closed to new entrants in July 2009 (Refer to Agri-Environment Options Scheme (AEOS))

**Rough Grazing** Grazed unreclaimable bogland, grazed mountain of known area and grazed lowland partially covered by scrub, bushes or rock. It does not include land with impeded drainage unless subject to flooding.

**Single Payment Scheme** The Single Payment Scheme introduced following decoupling of direct payments in 2005 is applicable to farmers who actively farmed during the reference years 2000, 2001 and 2002, who were paid Livestock Premia and/or Arable Aid in one or more of those years and who will continue to farm in the current year. The gross Single Payment is based on the average number of animals and/or the average number of hectares (in the case of Arable Aid) on which payments were made in the three reference years.

**Soil Group** Farms are classified into 3 major groups depending on their use range. Soil group 1 has the widest use range and soil group 3 contains farms with limited use range.

**Standard Man Day (SMD)** Eight hours of work supplied by a person over 18 years of age. The number of SMD required per hectare for the different crops, and per head for various categories of livestock, is used to calculate the total number of SMD required to operate the farm.

**System of Farming** See Appendices B and C

**Total Area** Map area of land owned, plus land rented, minus land let. It is equal to UAA plus 'remainder of farm'.

**Total Net Expenses** Direct costs plus overhead costs. Grants and discounts which reduce expenditure, rather than contribute to gross output, will have been deducted.

**Unemployment etc. %HH** Percentage of households where the holder and/or spouse are in receipt of social assistance payment (other than pension).

**Utilised Agricultural Area (UAA)** Area under crops and pasture plus the area (unadjusted) of rough grazing. It is the total area owned, plus area rented, minus area let, minus area under remainder of farm